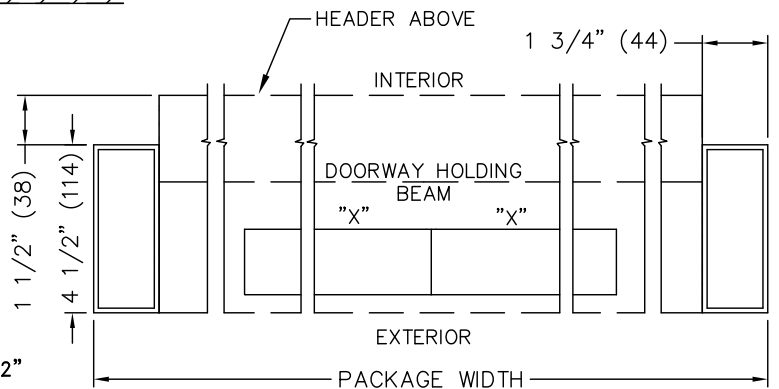
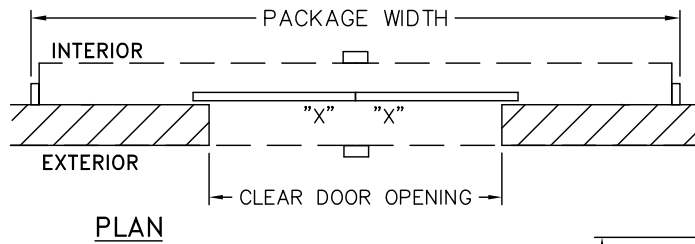
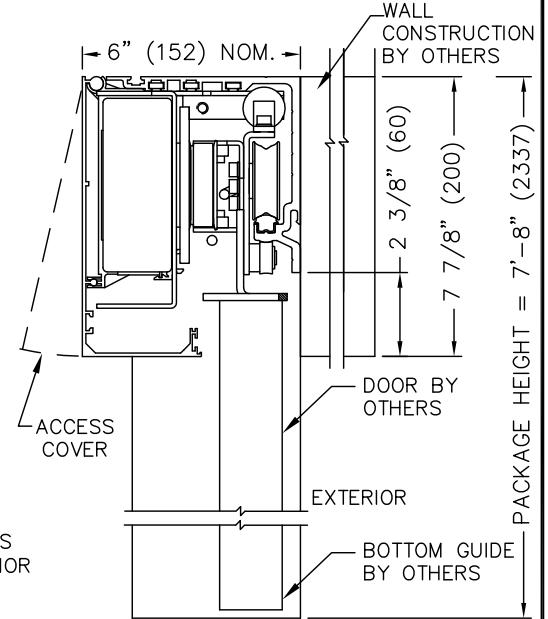
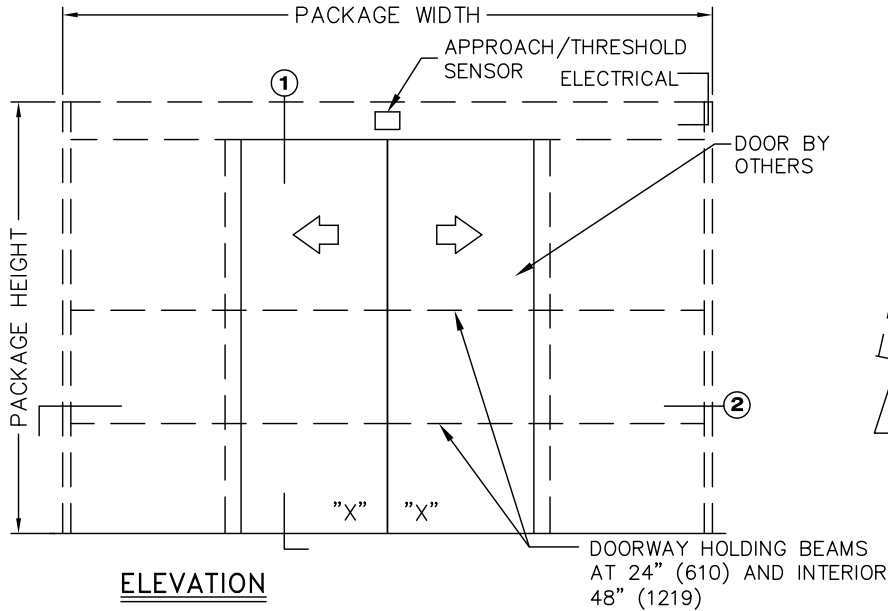


JOB NAME: _____ DATE: _____
 DOOR LOCATION: _____ DOOR NO: _____ SHEET ____ OF ____



Aluminum Narrow Stile Panels (2 1/8")
 Bipart Slide Formulas (Panel Overlap @ Wall 2 5/8")
 Door Opening Width=Masonry Opening - 7 1/4"
 Package Width=Masonry Opening + (2 x Panel Width) + 3 1/2"
 Panel Width=(Masonry Opening x .5) + 2 5/8"
 Panel Height=(Package Height - 6 9/32") -Floor Clearance

Flush Panel
 Bi-Part Slide Formulas (Variable Panel Overlap @ Wall)
 Door Opening Width=Masonry Opening
 Package Width=Masonry Opening + (2 x Panel Width) + 6 1/2"
 Panel Width=(Masonry Opening x .5) + Variable Overlap
 Panel Height=(Package Height - 6 9/32") - Floor Clearance

- NOTES:
1. DETAILS NOT TO SCALE.
 2. ELECTRICAL REQUIREMENTS:
 120VAC, 5AMPS MIN. TO OPERATOR BY ELECTRICAL CONTRACTOR.
 3. DOOR PACKAGES ARE INDIVIDUALLY ENGINEERED TO FIT YOUR JOB REQUIREMENTS.
 4. DOOR GUIDE RECOMMENDED.
 (NOT SUPPLIED BY TORMAX)