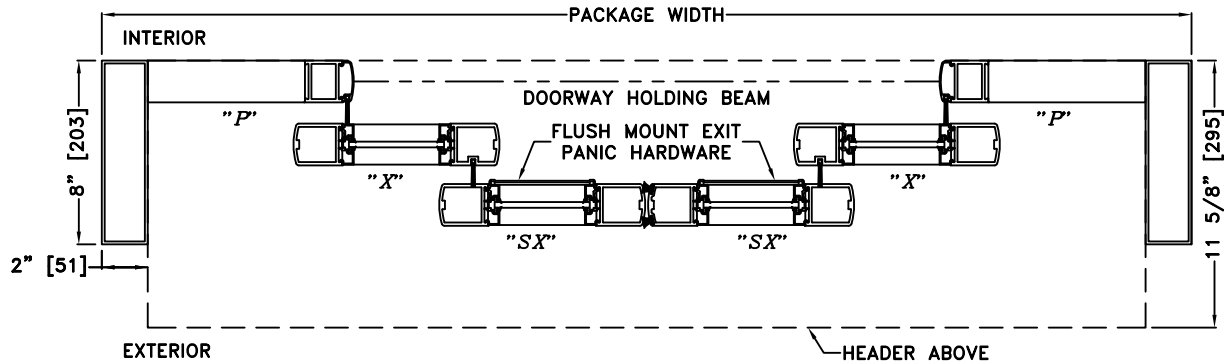
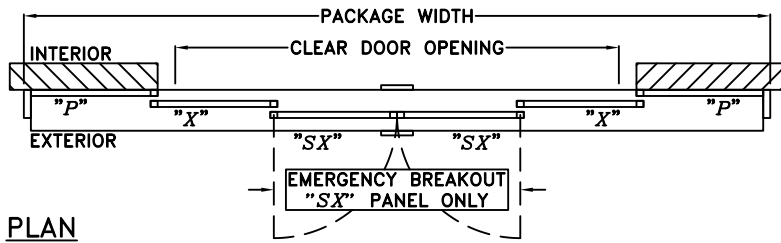
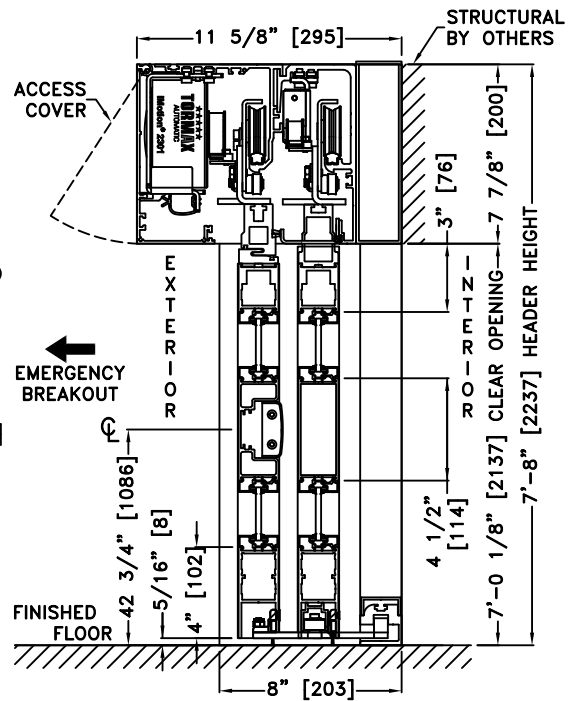
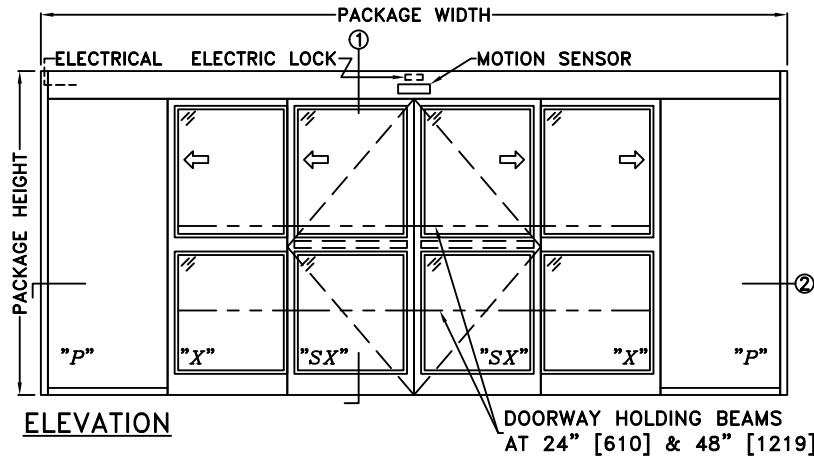


JOB NAME: \_\_\_\_\_ DATE: \_\_\_\_\_  
 DOOR LOCATION: \_\_\_\_\_ DOOR NO: \_\_\_\_\_ SHEET \_\_\_\_ OF \_\_\_\_



\*SEE APPENDIX FOR DETAILS OF HEAVY DUTY DRIVE SYSTEM, THRESHOLD OPTIONS, & SURFACE MOUNT CONCEALED VERTICAL ROD EXIT PANIC HARDWARE OPTION

**NOTES:**

1. DETAILS NOT TO SCALE
2. ELECTRICAL REQUIREMENTS:  
120 VAC, 5 AMPS MIN. TO OPERATOR BY ELECTRICAL CONTRACTOR
3. DOOR PACKAGES ARE INDIVIDUALLY ENGINEERED TO FIT YOUR JOB REQUIREMENTS

| SAMPLE PACKAGE WIDTH INFORMATION   |   |                                     |   |
|--|---|-------------------------------------|---|
| PACKAGE WIDTH [UW] (*)   | CLEAR DOOR OPENING [CDO] (*)  | PANEL WIDTH [PW] (*)                | EMERGENCY BREAKOUT WIDTH (*)                              |
| $(1 \frac{1}{2}) * [CDO] + 24 \frac{3}{16}$                                | $(\frac{2}{3}) * [UW] - 16 \frac{1}{8}$<br>-OR- $4 * [PW] - 20 \frac{3}{8}$ | $[UW] \frac{1}{6} + 1 \frac{1}{16}$ | $[UW] \frac{1}{3} - 3$<br>-OR- $2 * [PW] - 5 \frac{1}{8}$ |
| 10'-0" [3048]  | 63 7/8" [1622]  | 21" [533]                           | 37" [940]   |
| 12'-0" [3658]  | 79 7/8" [2029]  | 25" [635]                           | 45" [1143]  |
| 14'-0" [4267]  | 95 7/8" [2435]  | 29" [737]                           | 53" [1346]  |
| (*) CALCULATIONS BASED ON EQUAL PANELS, 2 1/8" NARROW STILES, & 1/4" GLASS |   |                                     |   |