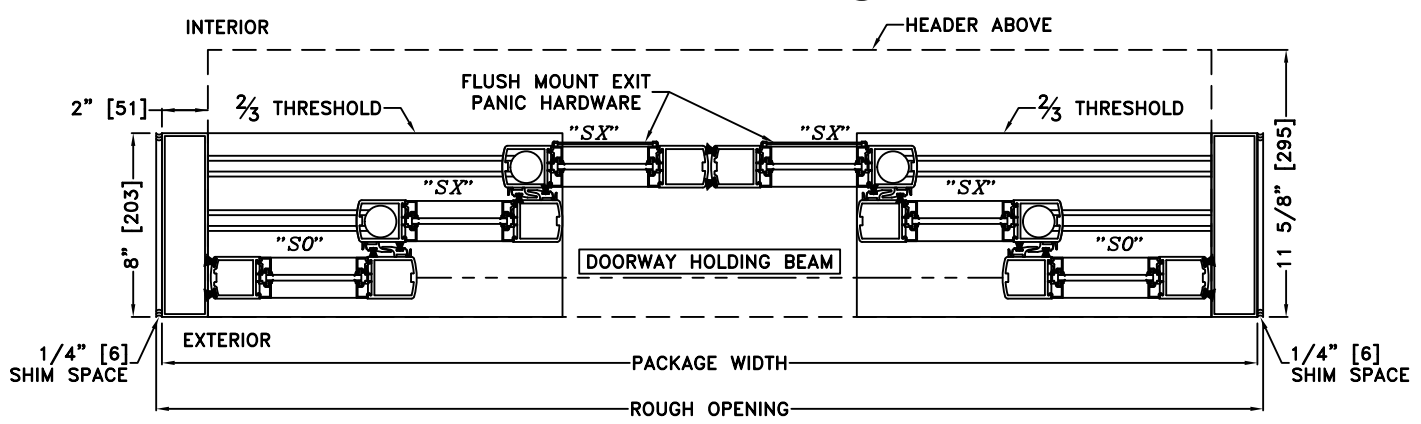
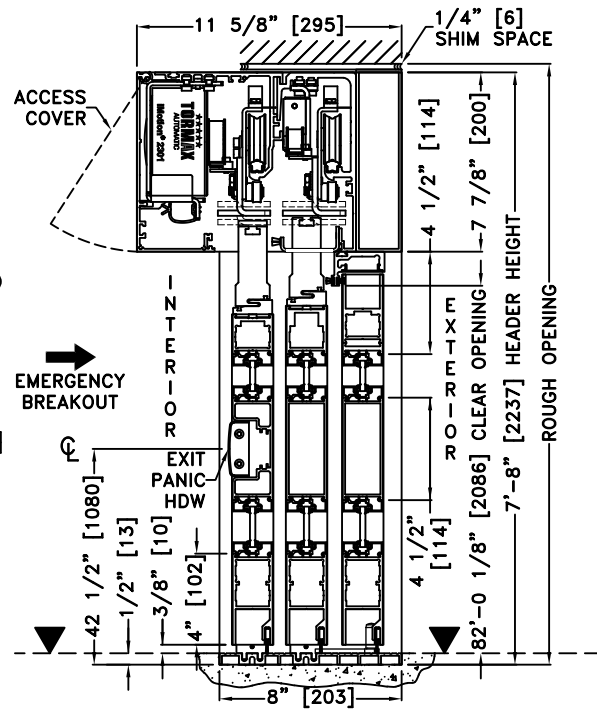
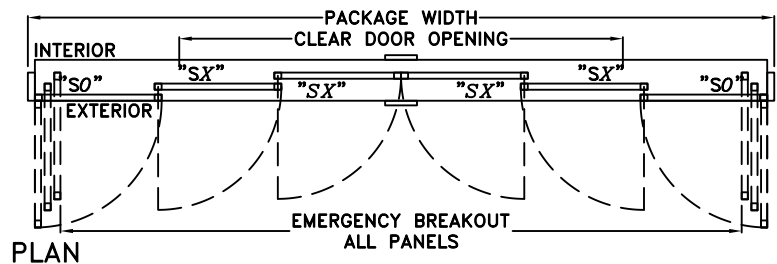
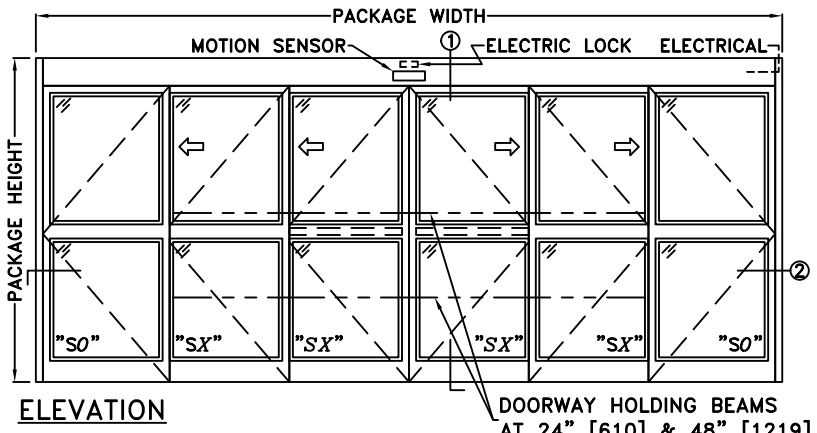




TX9430AC TELESCOPING AUTOMATIC SLIDING DOOR
BIPART INSIDE SLIDE APPLICATION (SO-SX-SX-SX-SX-SO)
W/ELECTRIC LOCK & FLUSH MOUNT EXIT PANIC HDW

JOB NAME: _____ DATE: _____
 DOOR LOCATION: _____ DOOR NO: _____ SHEET ____ OF ____



*SEE APPENDIX FOR DETAILS OF HEAVY DUTY DRIVE SYSTEM, THRESHOLD OPTIONS, & SURFACE MOUNT CONCEALED VERTICAL ROD EXIT PANIC HARDWARE OPTION

- NOTES:
 1. DETAILS NOT TO SCALE
 2. ELECTRICAL REQUIREMENTS: 120 VAC, 5 AMPS MIN. TO OPERATOR BY ELECTRICAL CONTRACTOR
 3. DOOR PACKAGES ARE INDIVIDUALLY ENGINEERED TO FIT YOUR JOB REQUIREMENTS

SAMPLE PACKAGE WIDTH INFORMATION			
PACKAGE WIDTH [UW] (*)	CLEAR DOOR OPENING [CDO] (*)	PANEL WIDTH [PW] (*)	EMERGENCY BREAKOUT WIDTH (*)
$(1 \frac{1}{2}) * [CDO] + 31 \frac{1}{8}$	$(\frac{2}{3}) * [UW] - 20 \frac{3}{4}$ -OR- $4 * [PW] - 24 \frac{7}{8}$	$[UW] \frac{1}{6} + 1 \frac{1}{32}$	$[UW] - 18 \frac{3}{4}$
10'-0" [3048]	59 1/4" [1505]	21" [533]	101 1/4" [2572]
12'-0" [3658]	75 1/4" [1911]	25" [635]	125 1/4" [3181]
14'-0" [4267]	91 1/4" [2318]	29" [737]	149 1/4" [3791]
(*) CALCULATIONS BASED ON EQUAL PANELS, 2 1/8" NARROW STILES, & 1/4" GLASS			