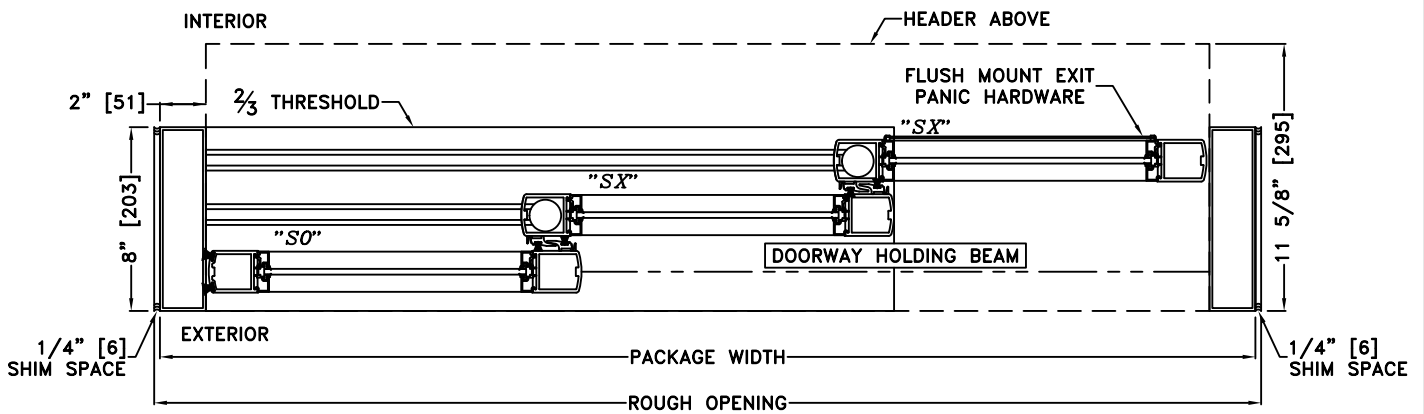
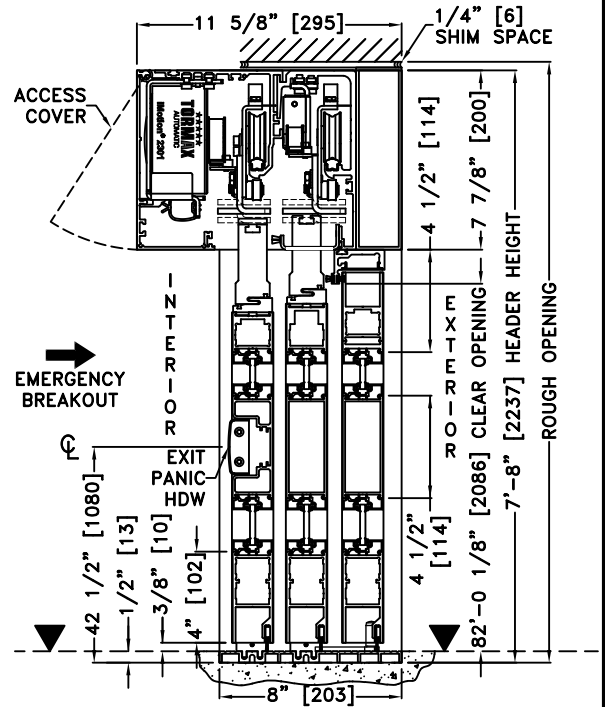
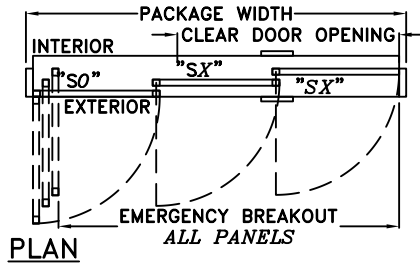
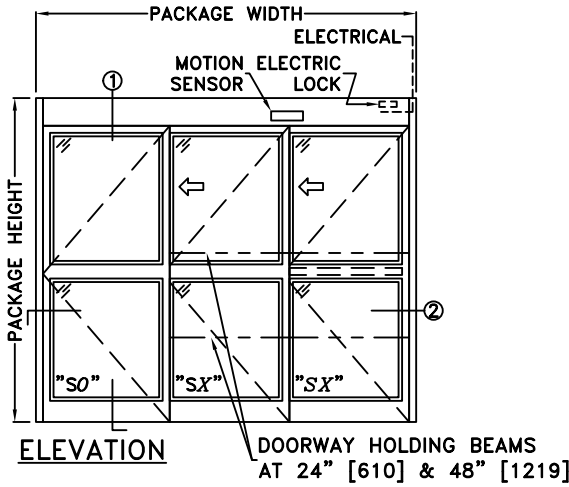


JOB NAME: \_\_\_\_\_ DATE: \_\_\_\_\_  
 DOOR LOCATION: \_\_\_\_\_ DOOR NO: \_\_\_\_\_ SHEET \_\_\_\_ OF \_\_\_\_



\*SEE APPENDIX FOR DETAILS OF HEAVY DUTY DRIVE SYSTEM, THRESHOLD OPTIONS, & SURFACE MOUNT CONCEALED VERTICAL ROD EXIT PANIC HARDWARE OPTION

**NOTES:**

1. DETAILS NOT TO SCALE
2. ELECTRICAL REQUIREMENTS: 120 VAC, 5 AMPS MIN. TO OPERATOR BY ELECTRICAL CONTRACTOR
3. DOOR PACKAGES ARE INDIVIDUALLY ENGINEERED TO FIT YOUR JOB REQUIREMENTS

SAMPLE PACKAGE WIDTH INFORMATION			
PACKAGE WIDTH [UW] (*)	CLEAR DOOR OPENING [CDO] (*)	PANEL WIDTH [PW] (*)	EMERGENCY BREAKOUT WIDTH (*)
$(1 \frac{1}{2}) * [CDO] + 17 \frac{5}{8}$	$(\frac{2}{3}) * [UW] - 11 \frac{3}{4}$ -OR- $2 * [PW] - 12 \frac{3}{8}$	$[UW] \frac{1}{3} + 5 \frac{1}{16}$	$[UW] - 9 \frac{3}{8}$
7'-0" [2134]	44 1/4" [1124]	28 5/16" [719]	74 5/8" [1895]
8'-0" [2438]	52 1/4" [1327]	32 5/16" [821]	86 5/8" [2200]
9'-0" [2743]	60 1/4" [1530]	36 5/16" [922]	98 5/8" [2505]
(*) CALCULATIONS BASED ON EQUAL PANELS, 2 1/8" NARROW STILES, & 1/4" GLASS			