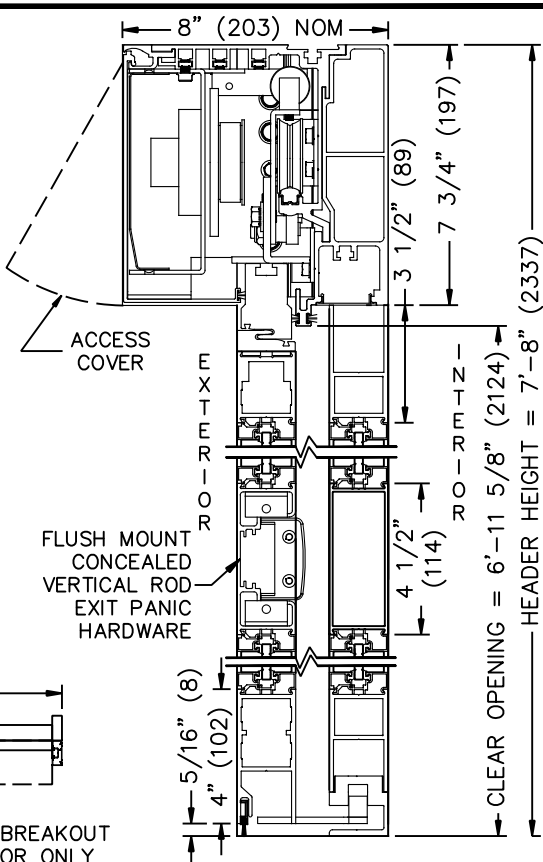
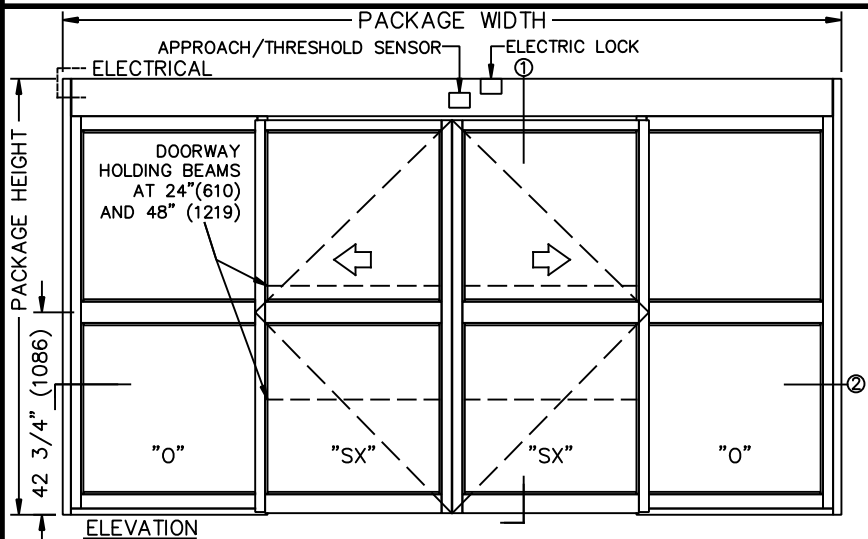


TX9200SMAC AUTOMATIC SLIDING DOOR SYSTEM
BI-PART S.M. OUTSIDE SLIDE W/ ELECTRIC LOCK
AND FLUSH MOUNT EXIT PANIC HARDWARE

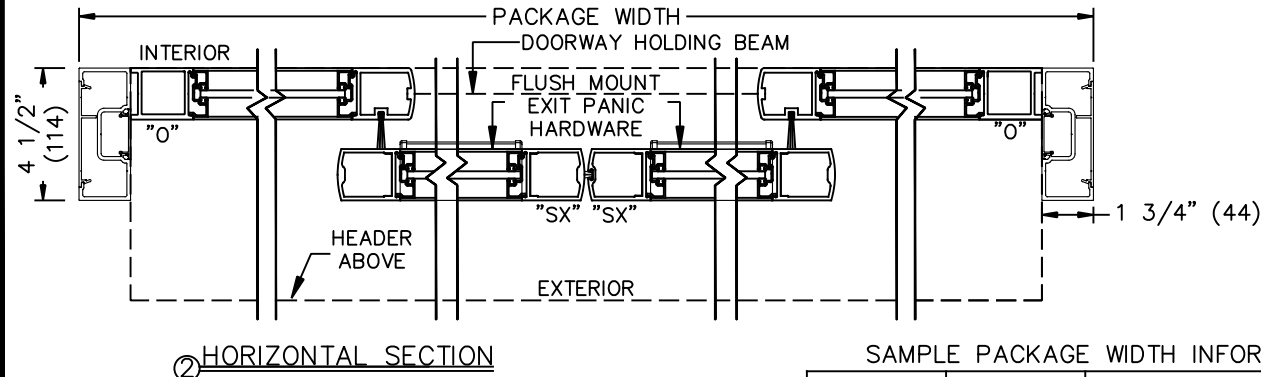
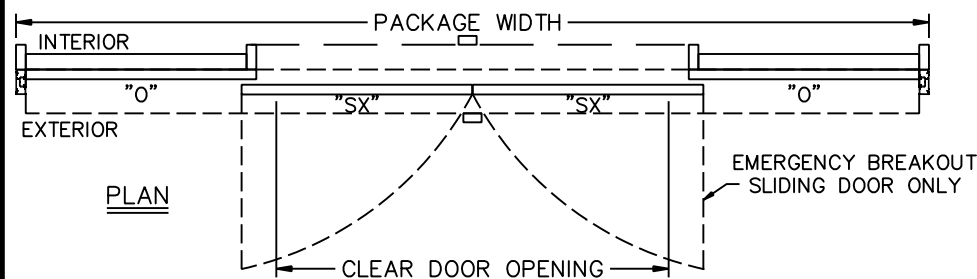
JOB NAME: _____ DATE: _____

DOOR LOCATION: _____ DOOR NO: _____ SHEET _____ OF _____



SEE APPENDIX FOR DETAILS OF TX9200 HEAVY DUTY DRIVE SYSTEM AND THRESHOLD OPTIONS.

SEE APPENDIX 2.1.H FOR SURFACE MOUNT CONCEALED VERTICAL ROD EXIT PANIC HARDWARE OPTION



SAMPLE PACKAGE WIDTH INFORMATION

PKG. WIDTH	NOMINAL CLEAR DOOR OPENING	SLIDING DOOR / PANEL NOM. WIDTH	EMERGENCY BREAKOUT NOM. WIDTH
10'-0" (3048)	48" (1219)	30 3/8" (772)	58" (1422)
12'-0" (3658)	60" (1254)	36 3/8" (924)	68" (1727)
14'-0" (4267)	72" (1829)	42 3/8" (1076)	80" (2032)

- NOTES:
- ELEVATION & PLAN DETAILS TO SCALE.
 - ELECTRICAL REQUIREMENTS:
120VAC, 5AMPS MIN. TO OPERATOR BY ELECTRICAL CONTRACTOR.
 - DOOR PACKAGES ARE INDIVIDUALLY ENGINEERED TO FIT YOUR JOB REQUIREMENTS.