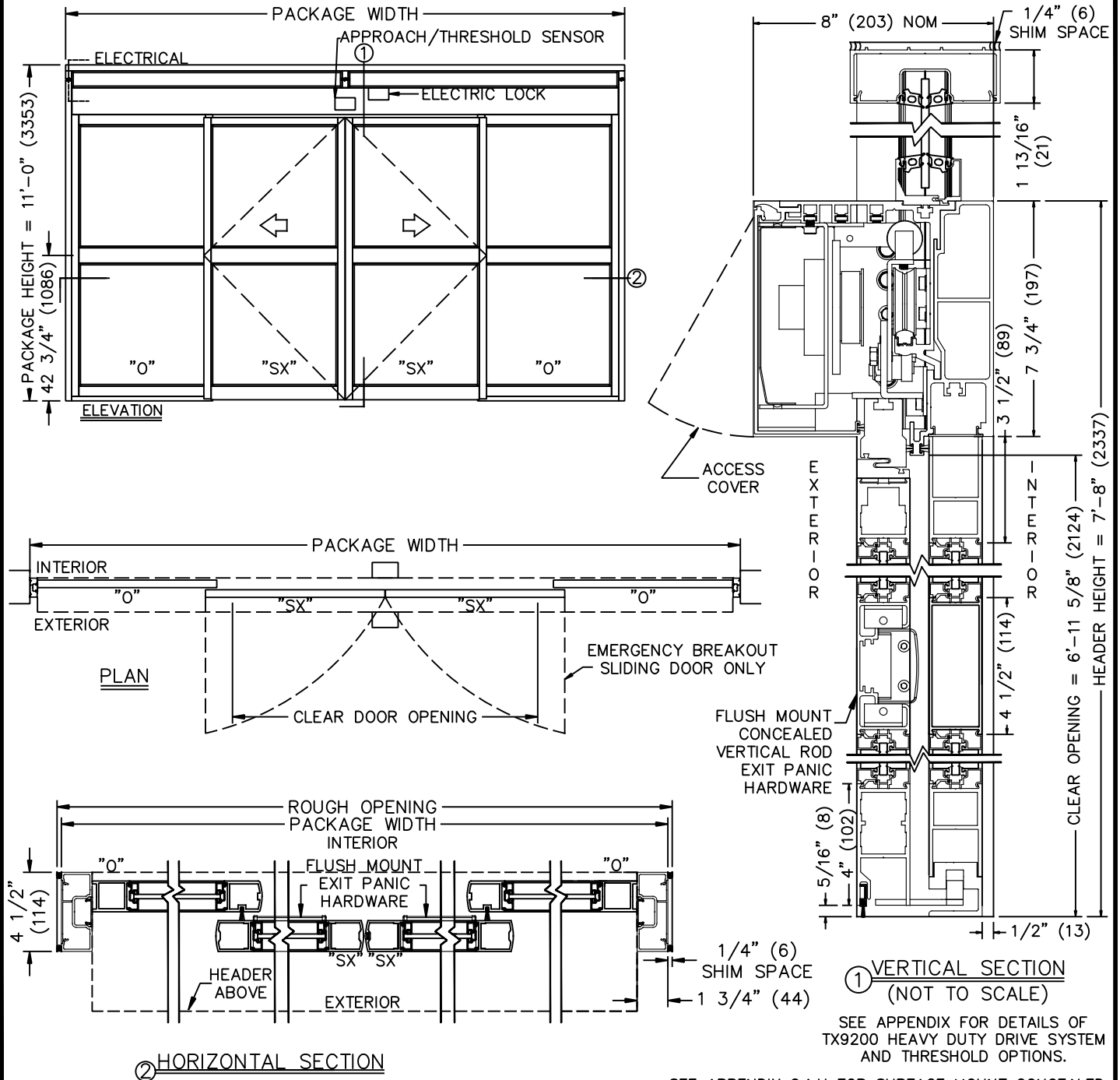


JOB NAME: \_\_\_\_\_ DATE: \_\_\_\_\_  
 DOOR LOCATION: \_\_\_\_\_ DOOR NO: \_\_\_\_\_ SHEET \_\_\_\_\_ OF \_\_\_\_\_



① VERTICAL SECTION  
 (NOT TO SCALE)  
 SEE APPENDIX FOR DETAILS OF  
 TX9200 HEAVY DUTY DRIVE SYSTEM  
 AND THRESHOLD OPTIONS.

SEE APPENDIX 2.1.H FOR SURFACE MOUNT CONCEALED  
 VERTICAL ROD EXIT PANIC HARDWARE OPTION

**SAMPLE PACKAGE WIDTH INFORMATION**

PKG. WIDTH	NOMINAL CLEAR DOOR OPENING	SLIDING DOOR / PANEL NOM. WIDTH	EMERGENCY BREAKOUT NOM. WIDTH
10'-0" (3048)	48" (1219)	30 3/8" (772)	58" (1422)
12'-0" (3658)	60" (1254)	36 3/8" (924)	68" (1727)
14'-0" (4267)	72" (1829)	42 3/8" (1076)	80" (2032)

- NOTES:  
 1. ELEVATION & PLAN DETAILS TO SCALE.  
 2. ELECTRICAL REQUIREMENTS:  
 120VAC, 5AMPS MIN. TO OPERATOR BY ELECTRICAL CONTRACTOR.  
 3. DOOR PACKAGES ARE INDIVIDUALLY ENGINEERED TO FIT YOUR  
 JOB REQUIREMENTS.