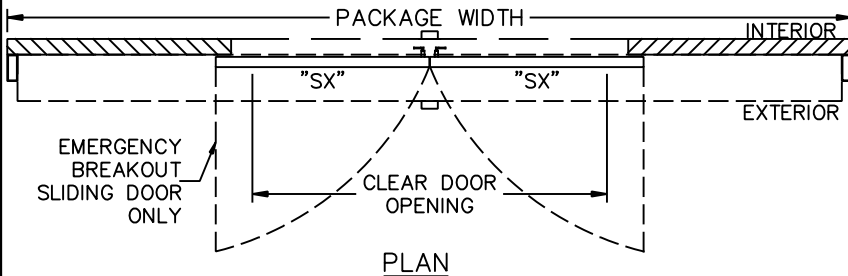
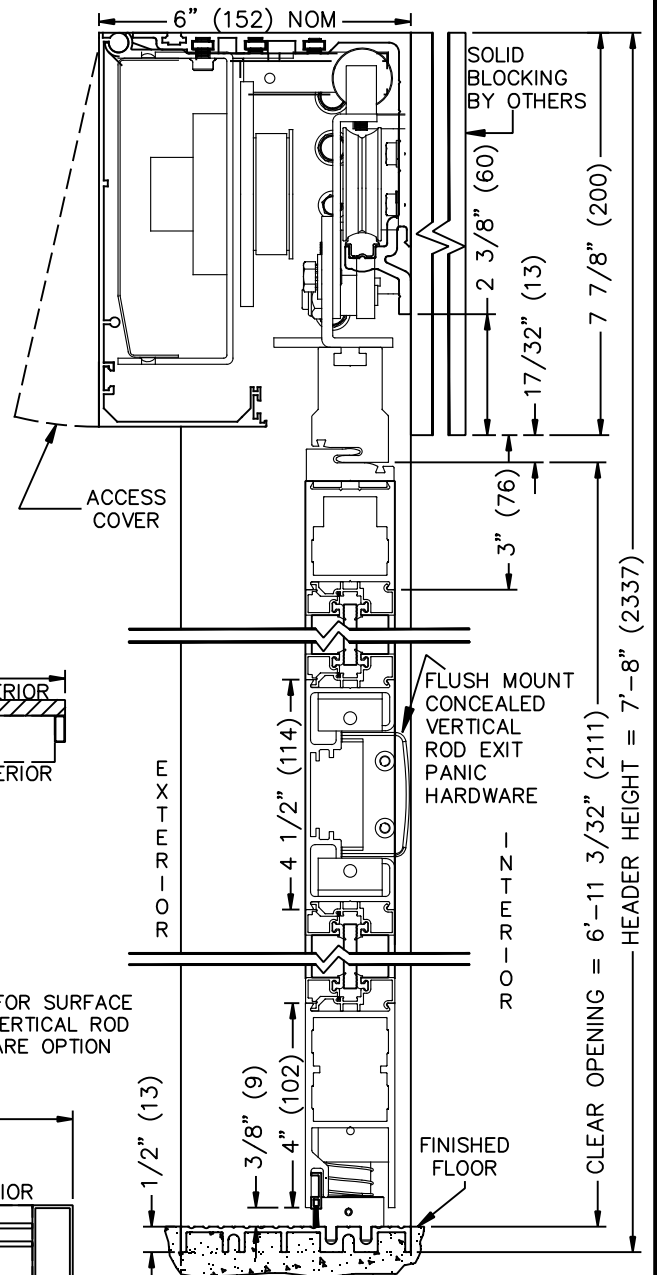
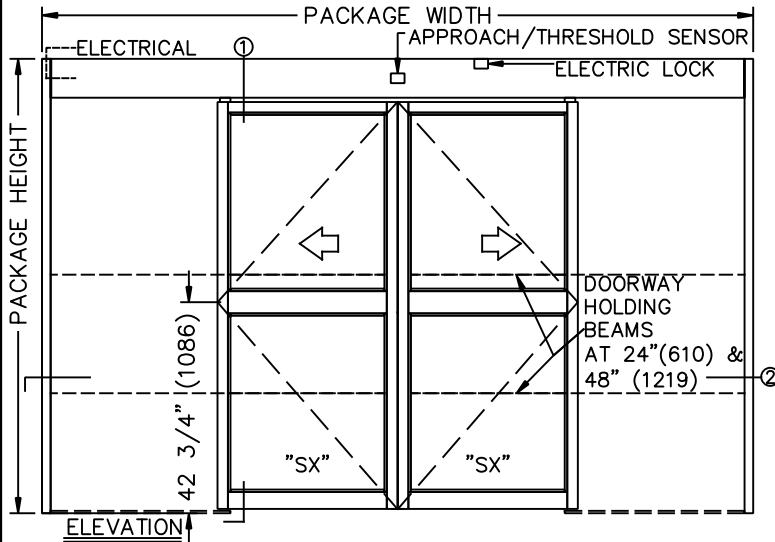
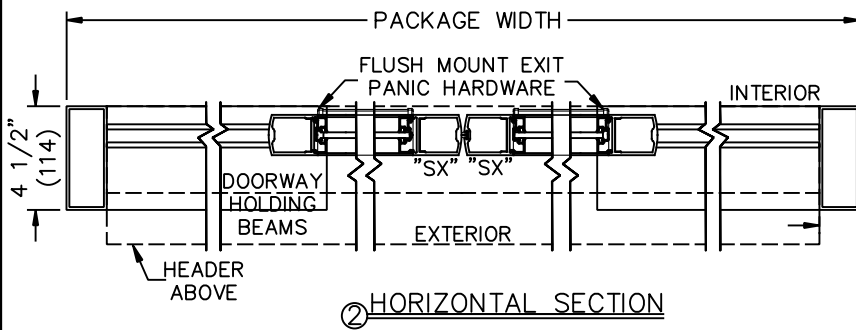


**TX9200F MAC AUTOMATIC SLIDING DOOR SYSTEM**  
**BI-PART FLUSH WALL MOUNT W/ ELECTRIC LOCK**  
**AND FLUSH MOUNT EXIT PANIC HARDWARE**

JOB NAME: \_\_\_\_\_ DATE: \_\_\_\_\_  
 DOOR LOCATION: \_\_\_\_\_ DOOR NO: \_\_\_\_\_ SHEET \_\_\_\_\_ OF \_\_\_\_\_



SEE APPENDIX 2.1.H FOR SURFACE MOUNT CONCEALED VERTICAL ROD EXIT PANIC HARDWARE OPTION



① **VERTICAL SECTION (NOT TO SCALE)**  
 SEE APPENDIX FOR DETAILS OF TX9200 HEAVY DUTY DRIVE SYSTEM AND THRESHOLD OPTIONS.

**SAMPLE PACKAGE WIDTH INFORMATION**

PKG. WIDTH	NOMINAL CLEAR DOOR OPENING	SLIDING DOOR / PANEL NOM. WIDTH	EMERGENCY BREAKOUT NOM. WIDTH
10'-0" (3048)	48" (1219)	30 3/8" (772)	58" (1422)
12'-0" (3658)	60" (1254)	36 3/8" (924)	68" (1727)
14'-0" (4267)	72" (1829)	42 3/8" (1076)	80" (2032)

- NOTES:
- ELEVATION & PLAN DETAILS TO SCALE.
  - ELECTRICAL REQUIREMENTS:  
 120VAC, 5AMPS MIN. TO OPERATOR BY ELECTRICAL CONTRACTOR.
  - DOOR PACKAGES ARE INDIVIDUALLY ENGINEERED TO FIT YOUR JOB REQUIREMENTS.