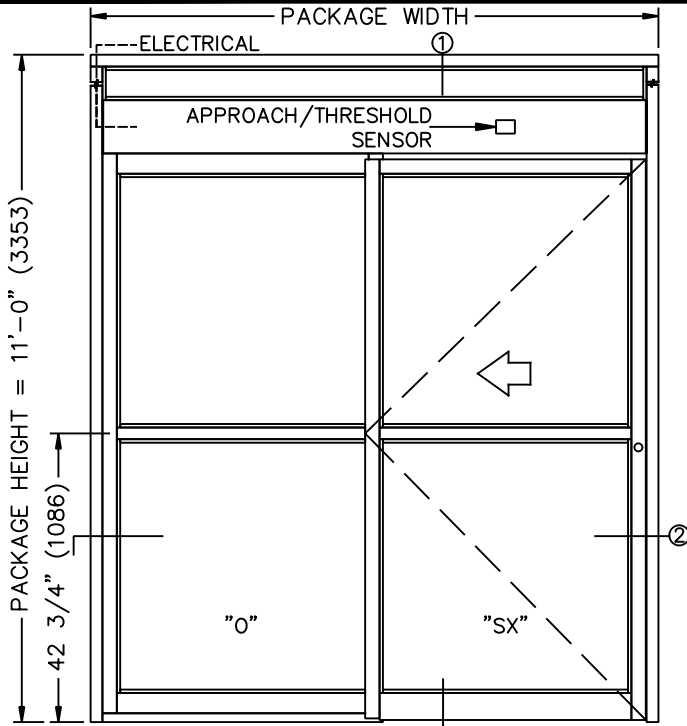
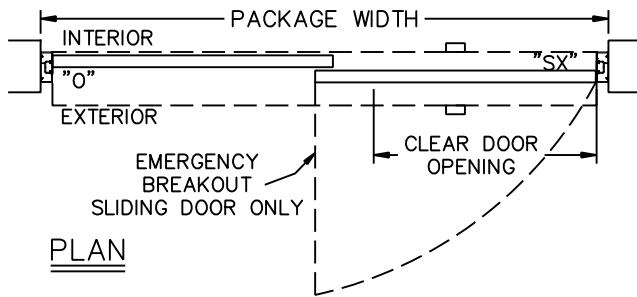


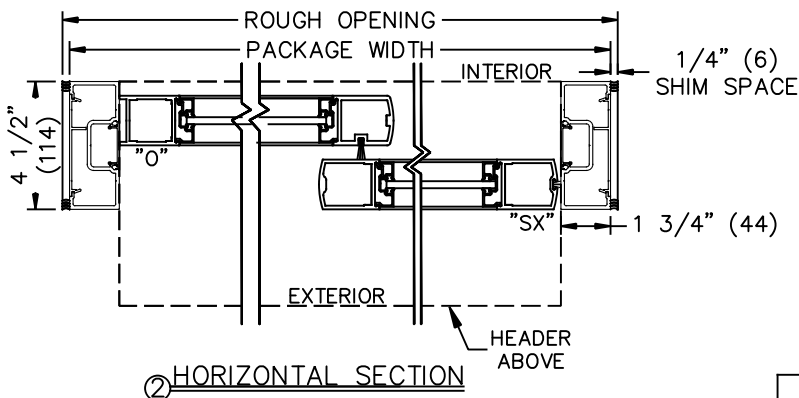
JOB NAME: \_\_\_\_\_ DATE: \_\_\_\_\_  
 DOOR LOCATION: \_\_\_\_\_ DOOR NO: \_\_\_\_\_ SHEET \_\_\_\_\_ OF \_\_\_\_\_



**ELEVATION**

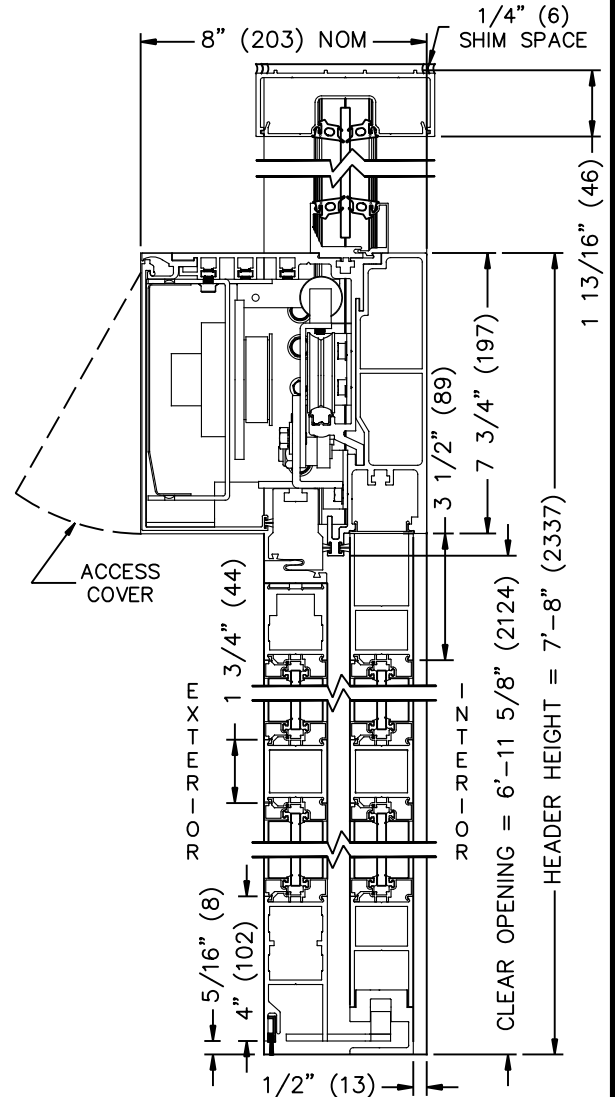


**PLAN**



**HORIZONTAL SECTION**

- NOTES:  
 1. ELEVATION & PLAN DETAILS TO SCALE.  
 2. ELECTRICAL REQUIREMENTS:  
 120VAC, 5AMPS MIN. TO OPERATOR BY ELECTRICAL CONTRACTOR.  
 3. DOOR PACKAGES ARE INDIVIDUALLY ENGINEERED TO FIT YOUR JOB REQUIREMENTS.



**① VERTICAL SECTION**  
 (NOT TO SCALE)

SEE APPENDIX FOR DETAILS OF TX9200 HEAVY DUTY DRIVE SYSTEM AND THRESHOLD OPTIONS.

**SAMPLE PACKAGE WIDTH INFORMATION**

| PKG. WIDTH   | NOMINAL CLEAR DOOR OPENING | SLIDING DOOR / PANEL NOM. WIDTH | EMERGENCY BREAKOUT NOM. WIDTH |
|--------------|----------------------------|---------------------------------|-------------------------------|
| 7'-0" (2134) | 36" (914)                  | 41 1/2" (1054)                  | 39" (991)                     |
| 8'-0" (2438) | 42" (1067)                 | 47 1/2" (1207)                  | 45" (1143)                    |
| 9'-0" (2743) | 48" (1219)                 | 53 1/2" (1358)                  | 51" (1295)                    |