



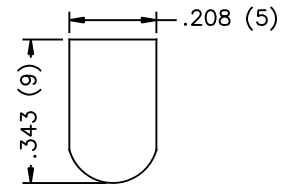
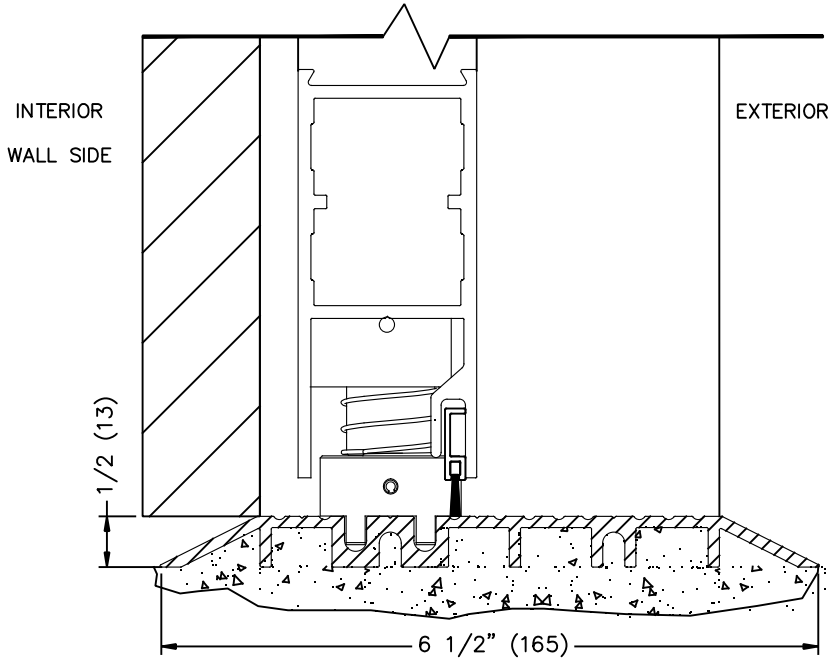
TX9200FM FLUSH WALL MOUNT

THRESHOLD OPTIONS—CONTINUOUS SURFACE MOUNTED TRACK

JOB NAME: _____ DATE: _____

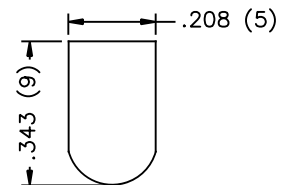
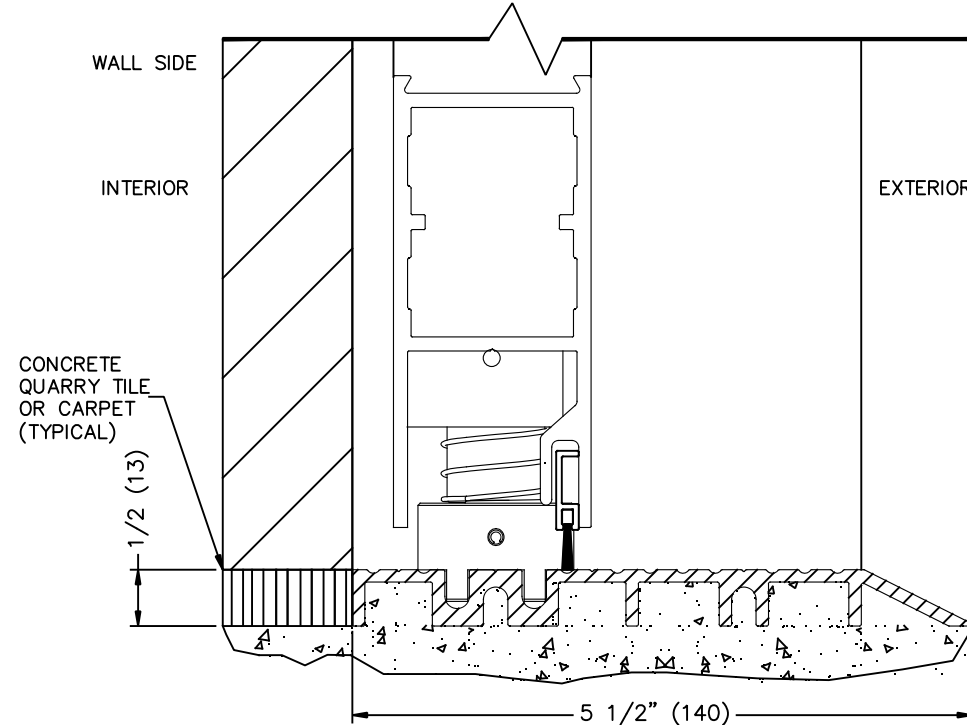
DOOR LOCATION: _____ DOOR NO: _____ SHEET ____ OF ____

THRESHOLD DOUBLE BEVELED EXTRUSION — 4 1/2" FRAME
(DOUBLE BEVEL THROUGH THE DOOR OPENING ONLY)



FILTER STRIP — USED AT SLIDE DOOR OPENING

THRESHOLD COMBINATION BEVEL/SQUARE EXTRUSION — 4 1/2" FRAME
(DOUBLE BEVEL THROUGH THE DOOR OPENING ONLY)



FILTER STRIP — USED AT SLIDE DOOR OPENING