

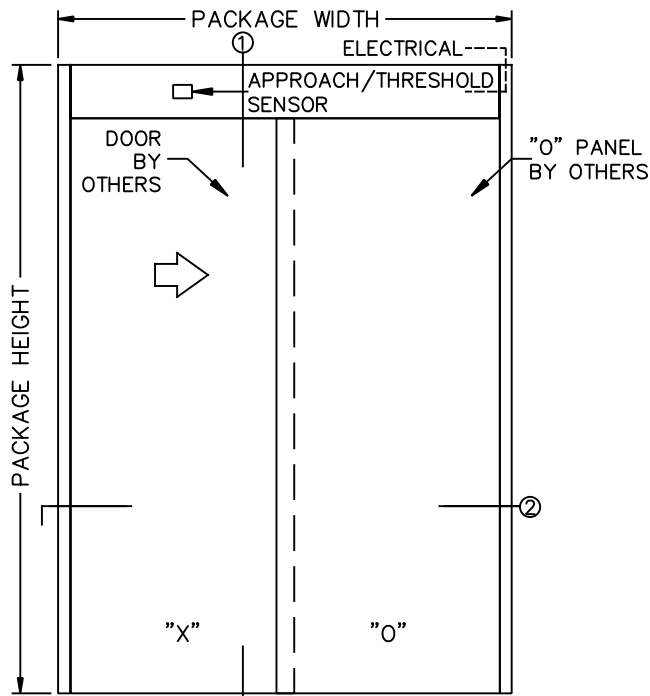


TX9300 AUTOMATIC SLIDING DOOR SYSTEM

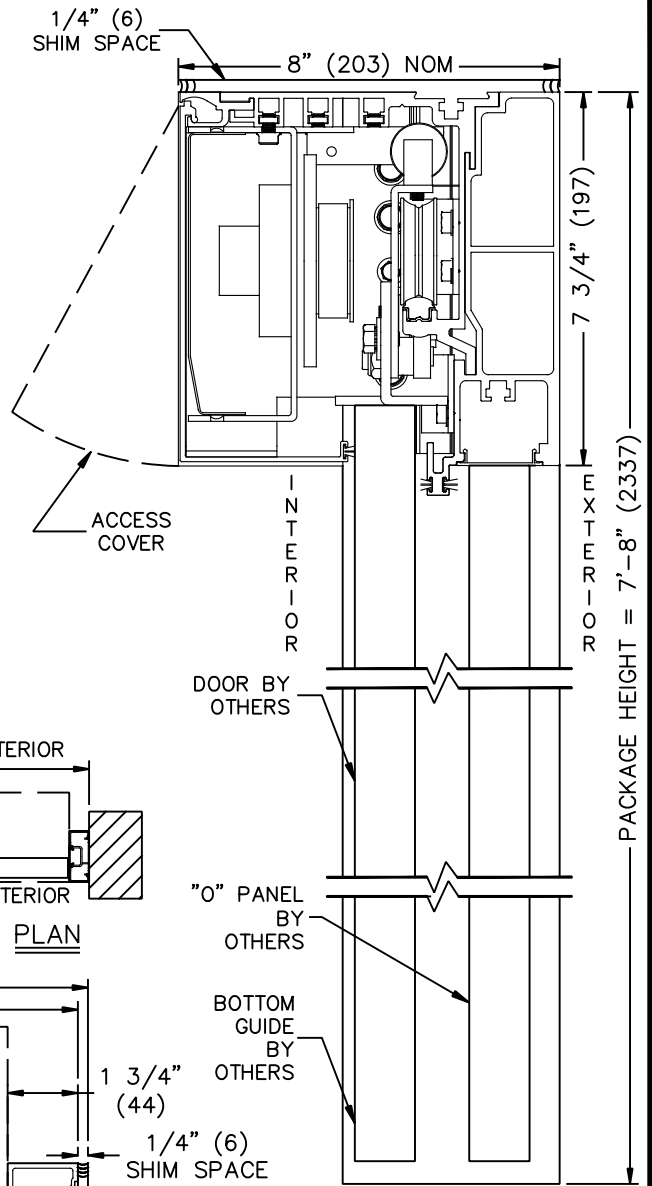
SINGLE, R.H. SELF-SUPPORTING UTILITY PACKAGE

JOB NAME: _____ DATE: _____

DOOR LOCATION: _____ DOOR NO: _____ SHEET ____ OF ____

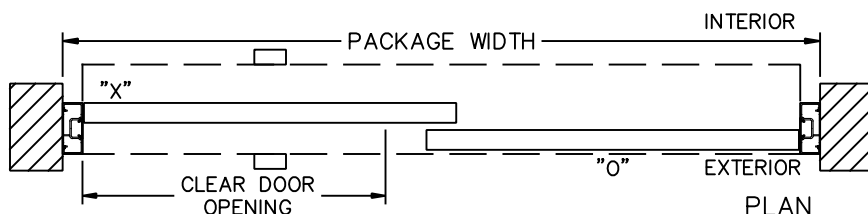


ELEVATION

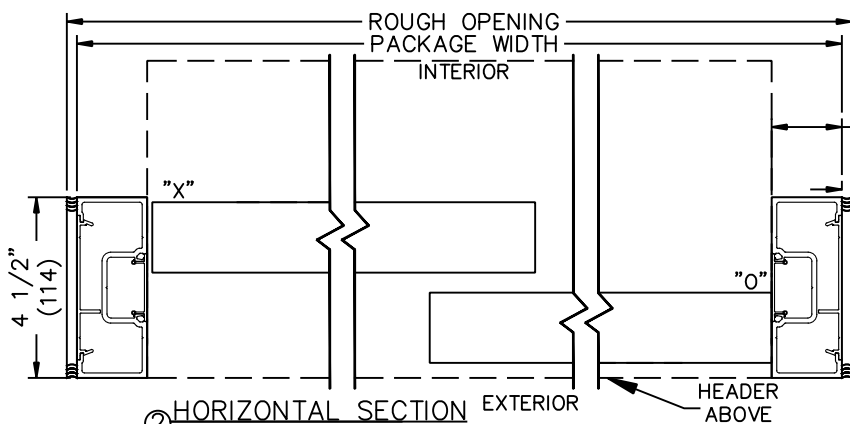


① VERTICAL SECTION (NOT TO SCALE)

SEE APPENDIX FOR DETAILS OF TX9300 HEAVY DUTY DRIVE SYSTEM



PLAN



② HORIZONTAL SECTION

NOTES:

1. ELEVATION & PLAN DETAILS TO SCALE.
2. ELECTRICAL REQUIREMENTS:
120VAC, 5AMPS MIN. TO OPERATOR BY ELECTRICAL CONTRACTOR.
3. DOOR PACKAGES ARE INDIVIDUALLY ENGINEERED TO FIT YOUR JOB REQUIREMENTS.
4. DOOR GUIDE RECOMMENDED.
(NOT SUPPLIED BY TORMAX)

SAMPLE PACKAGE WIDTH INFORMATION

PKG. WIDTH	NOMINAL CLEAR DOOR OPENING	SLIDING DOOR / PANEL NOM. WIDTH
7'-0" (2134)	36" (914)	41 1/2" (1054)
8'-0" (2438)	42" (1067)	47 1/2" (1207)
9'-0" (2743)	48" (1219)	53 1/2" (1358)