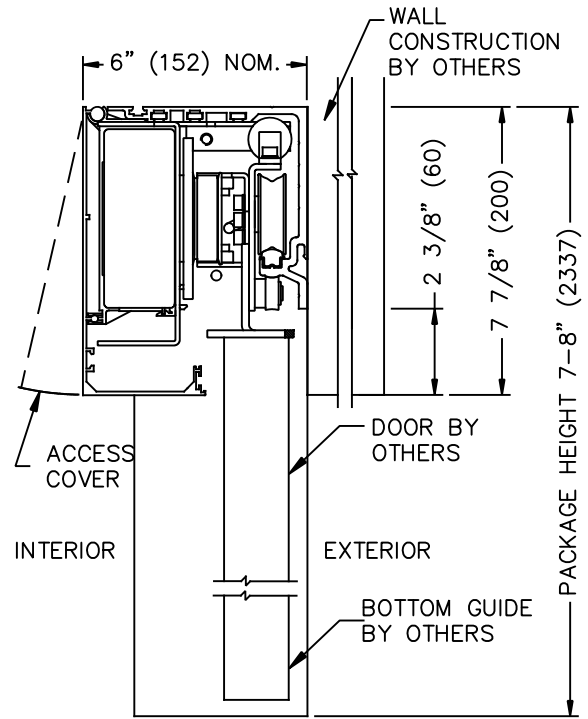
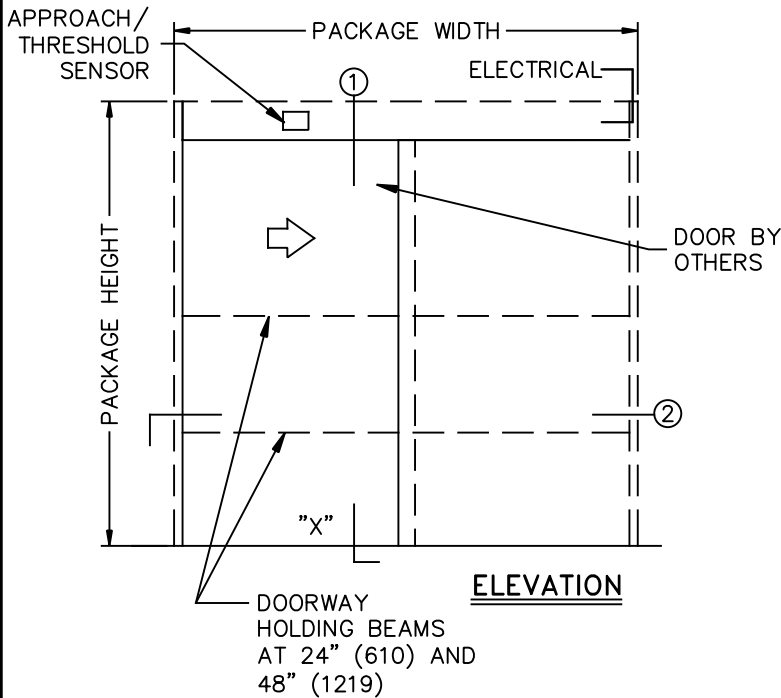
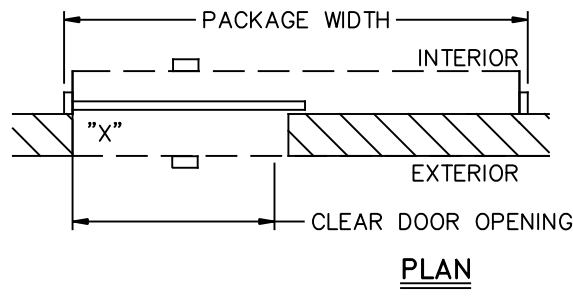


JOB NAME: \_\_\_\_\_ DATE: \_\_\_\_\_

DOOR LOCATION: \_\_\_\_\_ DOOR NO: \_\_\_\_\_ SHEET \_\_\_\_ OF \_\_\_\_

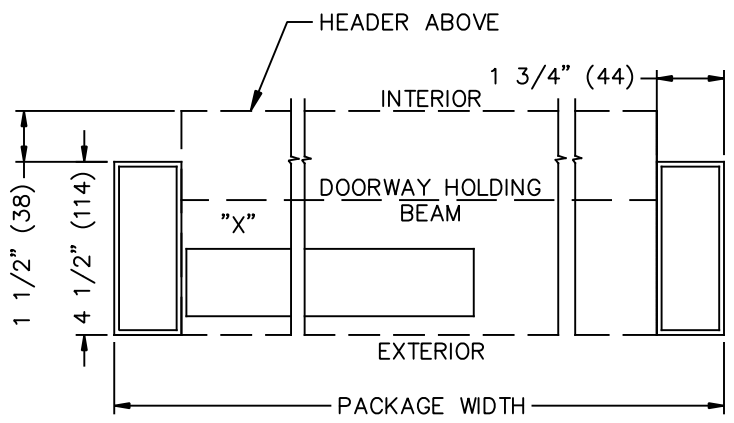


SEE APPENDIX FOR DETAILS OF TX9300 HEAVY DUTY DRIVE SYSTEM



**Aluminum Narrow Stile Panels (2 1/8")**  
 Single Slide Formulas (Panel Overlap @ Wall 2 5/8")  
 Door Opening Width=Masonry Opening - 3 5/8"  
 Panel Width=Masonry Opening + 2 5/8"  
 Package Width=Masonry Opening + Panel Width + 3 1/2"  
 Panel Height=(Package Height - 6 9/32") - Floor Clearance

**Flush Panel**  
 Single Slide Formulas (Variable Panel Overlap @ Wall)  
 Door Opening Width=Masonry Opening  
 Package Width=Masonry Opening + Panel Width + 5"  
 Panel Width=Masonry Opening + Variable Overlap  
 Panel Height=(Package Height - 6 9/32") - Floor Clearance



- NOTES:
1. DETAILS NOT TO SCALE.
  2. ELECTRICAL REQUIREMENTS:  
 120VAC, 5AMPS MIN. TO OPERATOR BY ELECTRICAL CONTRACTOR.
  3. DOOR PACKAGES ARE INDIVIDUALLY ENGINEERED TO FIT YOUR JOB REQUIREMENTS.
  4. DOOR GUIDE RECOMMENDED.  
 (NOT SUPPLIED BY TORMAX)