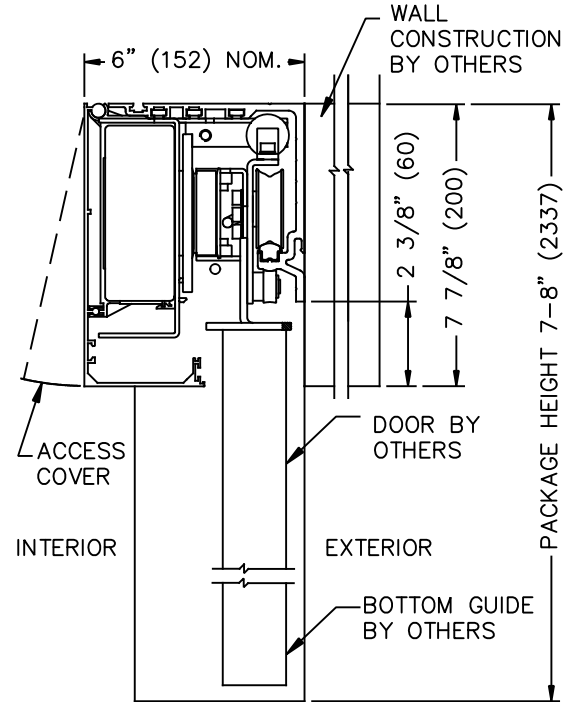
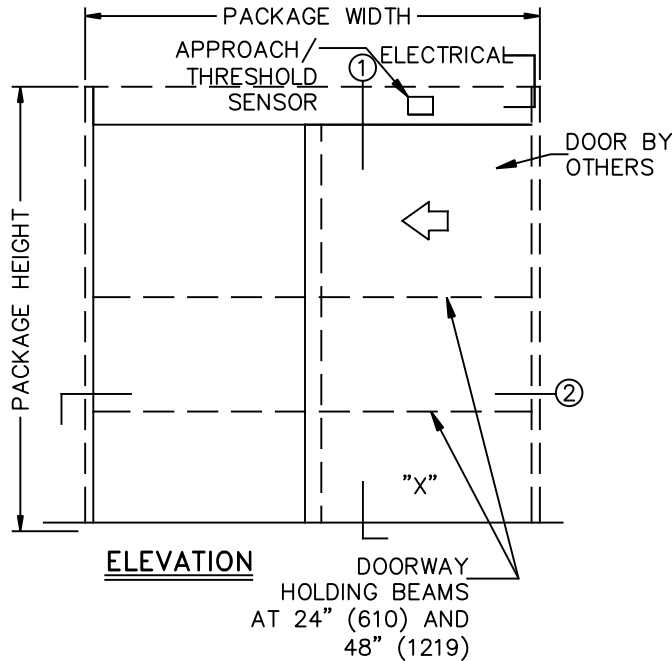
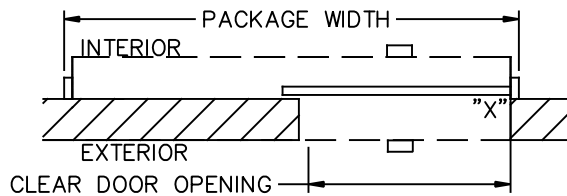


JOB NAME: _____ DATE: _____
 DOOR LOCATION: _____ DOOR NO: _____ SHEET ____ OF ____



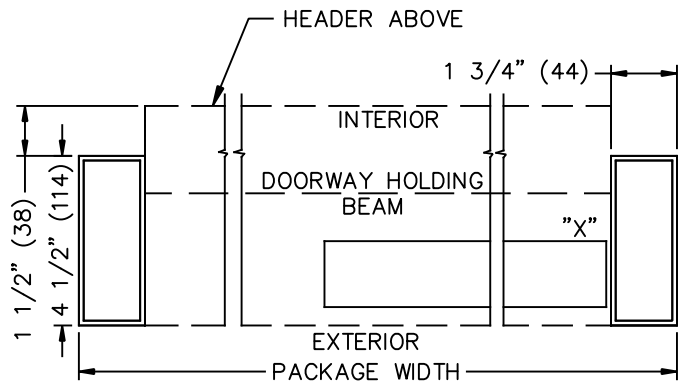
① **VERTICAL SECTION**



PLAN

Aluminum Narrow Stile Panels (2 1/8")
 Single Slide Formulas (Panel Overlap @ Wall 2 5/8")
 Door Opening Width=Masonry Opening - 3 5/8"
 Panel Width=Masonry Opening + 2 5/8"
 Package Width=Masonry Opening + Panel Width + 3 1/2"
 Panel Height=(Package Height - 6 9/32") - Floor Clearance

Flush Panel
 Single Slide Formulas (Variable Panel Overlap @ Wall)
 Door Opening Width=Masonry Opening
 Package Width=Masonry Opening + Panel Width + 5"
 Panel Width=Masonry Opening + Variable Overlap
 Panel Height=(Package Height - 6 9/32") - Floor Clearance



② **HORIZONTAL SECTION**

NOTES:

1. DETAILS NOT TO SCALE.
2. ELECTRICAL REQUIREMENTS:
120VAC, 5AMPS MIN. TO OPERATOR BY ELECTRICAL CONTRACTOR.
3. DOOR PACKAGES ARE INDIVIDUALLY ENGINEERED TO FIT YOUR JOB REQUIREMENTS.
4. DOOR GUIDE RECOMMENDED.
(NOT SUPPLIED BY TORMAX)