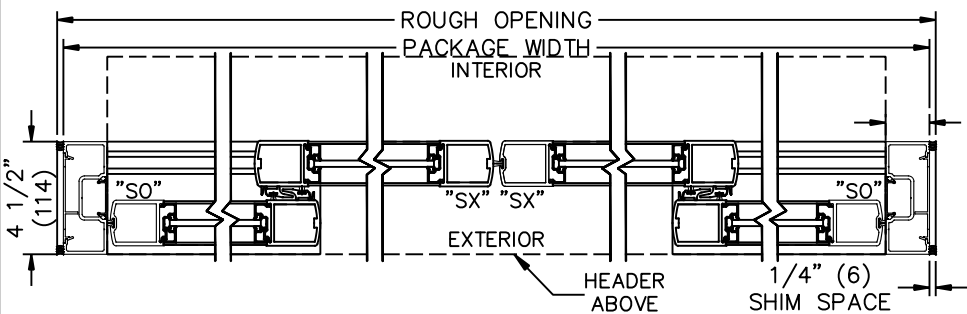
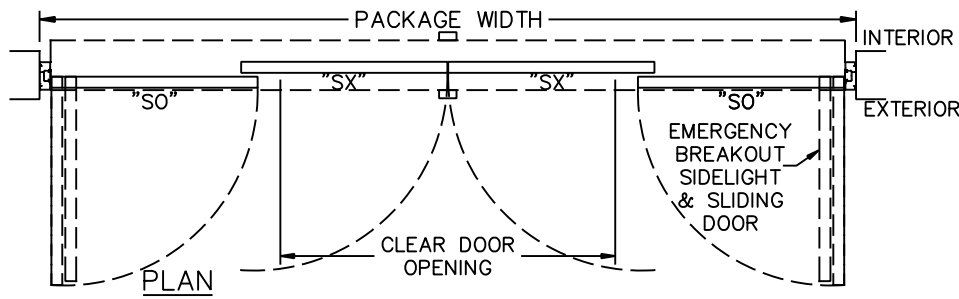
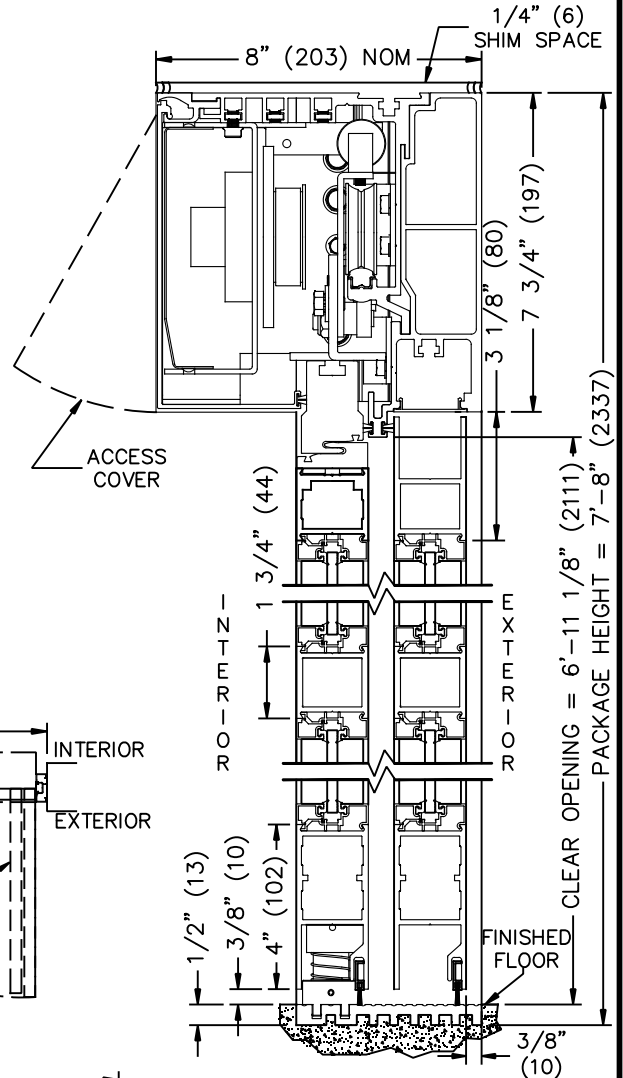
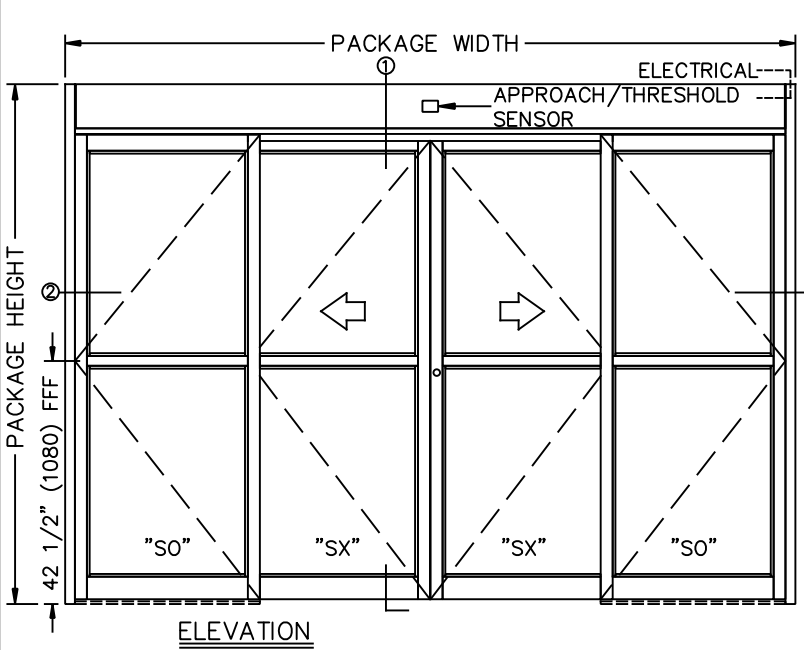


JOB NAME: _____ DATE: _____

DOOR LOCATION: _____ DOOR NO: _____ SHEET ____ OF ____



① VERTICAL SECTION
 (NOT TO SCALE)

1 3/4" SEE APPENDIX FOR DETAILS OF TX9300 HEAVY DUTY DRIVE SYSTEM AND THRESHOLD OPTIONS.

② HORIZONTAL SECTION

NOTES:

- ELEVATION & PLAN DETAILS TO SCALE.
- ELECTRICAL REQUIREMENTS:
 120VAC, 5AMPS MIN. TO OPERATOR BY ELECTRICAL CONTRACTOR.
- DOOR PACKAGES ARE INDIVIDUALLY ENGINEERED TO FIT YOUR JOB REQUIREMENTS.

SAMPLE PACKAGE WIDTH INFORMATION

PKG. WIDTH	NOMINAL CLEAR DOOR OPENING	SLIDING DOOR / PANEL NOM. WIDTH	EMERGENCY BREAKOUT NOM. WIDTH
10'-0" (3048)	48" (1219)	30 3/8" (772)	105" (2667)
12'-0" (3658)	60" (1254)	36 3/8" (924)	129" (3277)
14'-0" (4267)	72" (1829)	42 3/8" (1076)	153" (3886)