

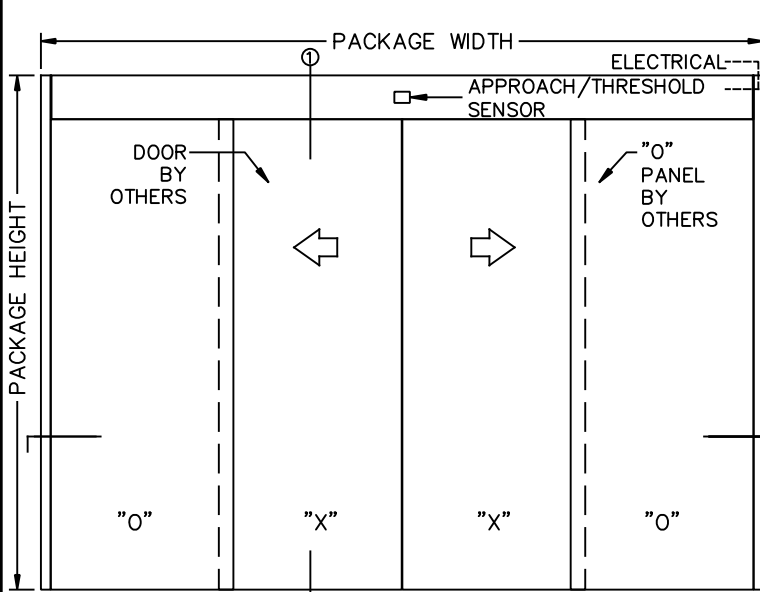


TX9300 AUTOMATIC SLIDING DOOR SYSTEM

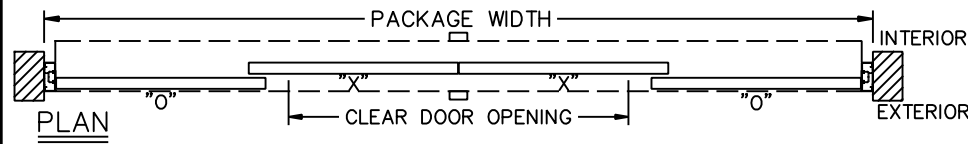
BI-PART SELF-SUPPORTING UTILITY PACKAGE

JOB NAME: _____ DATE: _____

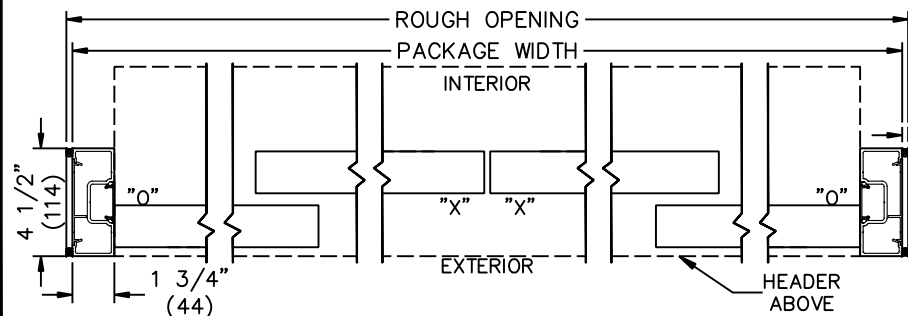
DOOR LOCATION: _____ DOOR NO: _____ SHEET _____ OF _____



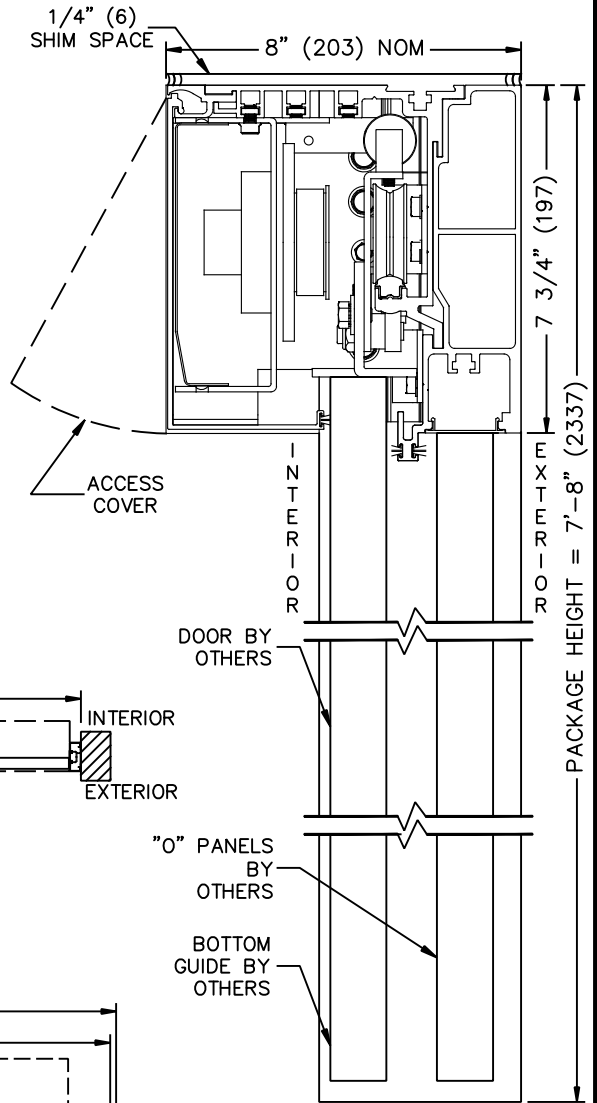
ELEVATION



PLAN



HORIZONTAL SECTION



VERTICAL SECTION
(NOT TO SCALE)

SEE APPENDIX FOR DETAILS OF TX9300 HEAVY DUTY DRIVE SYSTEM

- NOTES:
- ELEVATION & PLAN DETAILS TO SCALE.
 - ELECTRICAL REQUIREMENTS:
120VAC, 5AMPS MIN. TO OPERATOR BY ELECTRICAL CONTRACTOR.
 - DOOR PACKAGES ARE INDIVIDUALLY ENGINEERED TO FIT YOUR JOB REQUIREMENTS.
 - DOOR GUIDE RECOMMENDED.
(NOT SUPPLIED BY TORMAX)

SAMPLE PACKAGE WIDTH INFORMATION

PKG. WIDTH	NOMINAL CLEAR DOOR OPENING	SLIDING DOOR / PANEL NOM. WIDTH
10'-0" (3048)	48" (1219)	30 3/8" (772)
12'-0" (3658)	60" (1254)	36 3/8" (924)
14'-0" (4267)	72" (1829)	42 3/8" (1076)