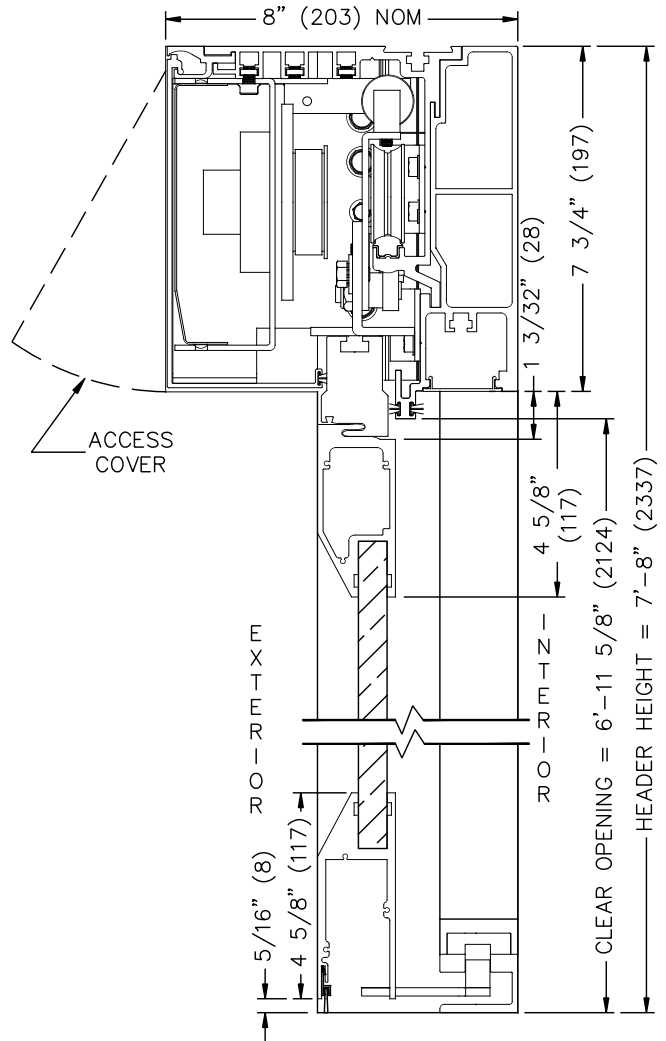
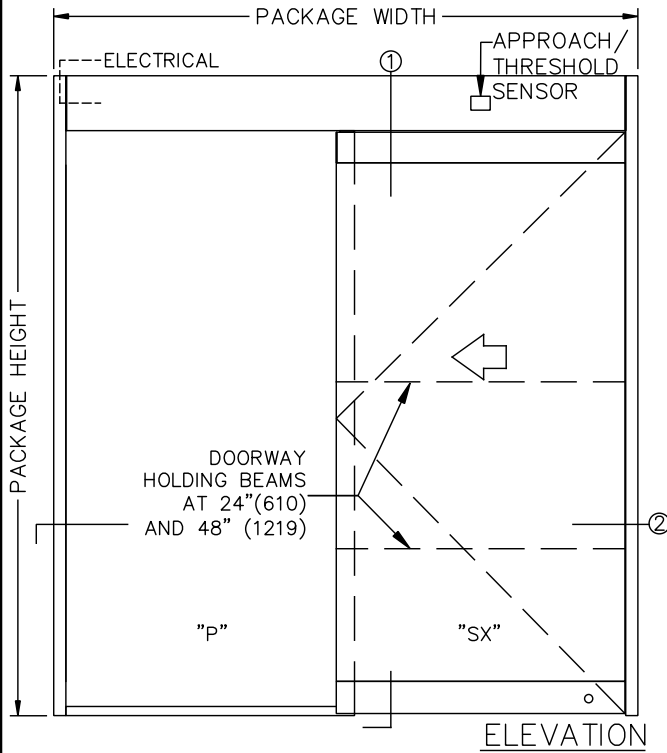




# TX9500SM AG AUTOMATIC SLIDING DOOR SYSTEM

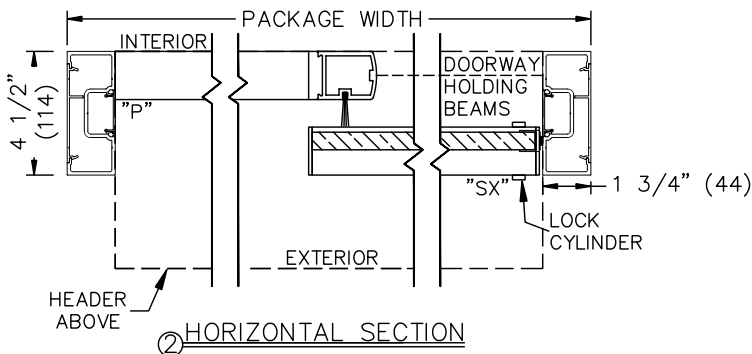
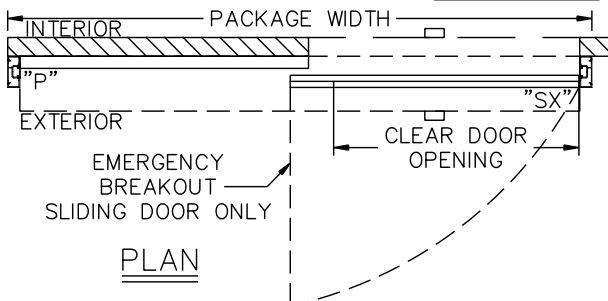
## SINGLE, LEFT HAND SURFACE MOUNT OUTSIDE SLIDE WITH "P" PANEL ALL GLASS SLIDER

JOB NAME: \_\_\_\_\_ DATE: \_\_\_\_\_  
 DOOR LOCATION: \_\_\_\_\_ DOOR NO: \_\_\_\_\_ SHEET \_\_\_\_ OF \_\_\_\_



① VERTICAL SECTION  
(NOT TO SCALE)

SEE APPENDIX 2.1.A FOR THRESHOLD OPTIONS.  
 SEE APPENDIX 2.4.A FOR DETAILS OF TX9500AG WITH HEAVY DUTY DRIVE SYSTEM.



**NOTES:**

- ELEVATION & PLAN DETAILS TO SCALE.
- ELECTRICAL REQUIREMENTS:  
120VAC, 5AMPS MIN. TO OPERATOR BY ELECTRICAL CONTRACTOR.
- DOOR PACKAGES ARE INDIVIDUALLY ENGINEERED TO FIT YOUR JOB REQUIREMENTS.

**SAMPLE PACKAGE WIDTH INFORMATION**

PKG. WIDTH	NOMINAL CLEAR DOOR OPENING	SLIDING DOOR / PANEL NOM. WIDTH	EMERGENCY BREAKOUT NOM. WIDTH
7'-0"(2134)	36"(914)	41 1/2"(1054)	39"(991)
8'-0"(2438)	42"(1067)	47 1/2"(1207)	45"(1143)
9'-0"(2743)	48"(1219)	53 1/2"(1358)	51"(1295)