

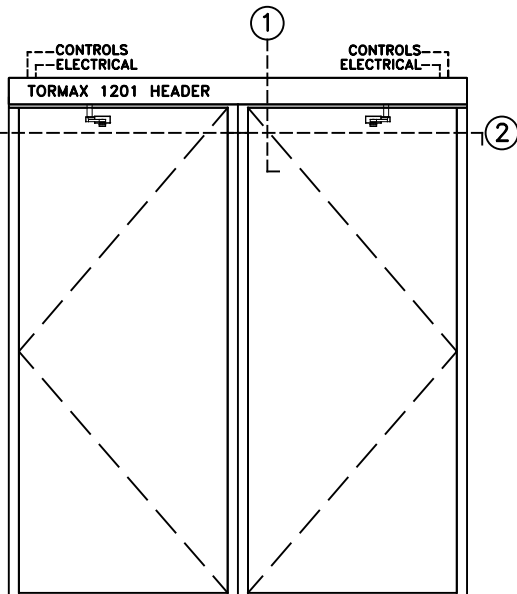


# TORMAX 1201 SWING DOOR OPERATOR

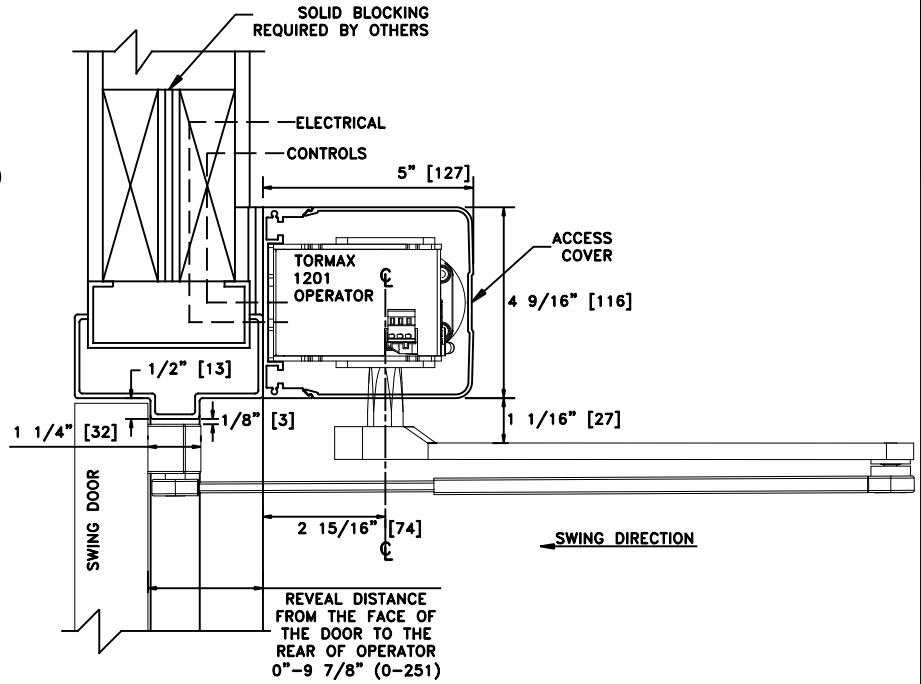
SIMULTANEOUS PAIR, W/CONTINUOUS HEADER, VISIBLE  
OUTSWING, BUTT HUNG AND OFFSET PIVOT APPLICATION

JOB NAME: \_\_\_\_\_ DATE: \_\_\_\_\_

DOOR LOCATION: \_\_\_\_\_ DOOR NO: \_\_\_\_\_ SHEET \_\_\_\_\_ OF \_\_\_\_\_

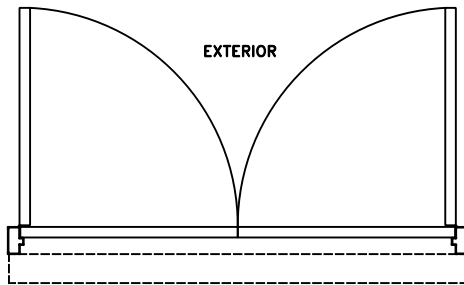


ELEVATION



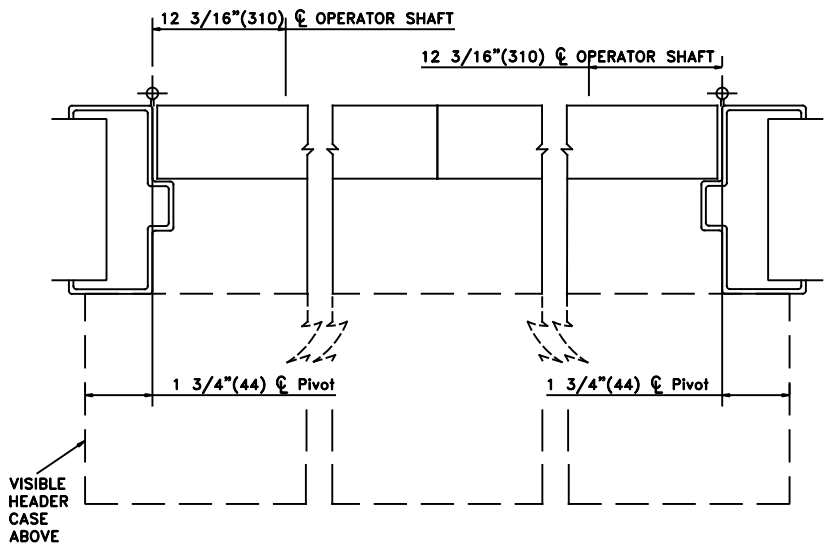
REVEAL DISTANCE  
FROM THE FACE OF  
THE DOOR TO THE  
REAR OF OPERATOR  
0"–9 7/8" (0–251)

① VERTICAL SECTION



INTERIOR

PLAN



VISIBLE  
HEADER  
CASE  
ABOVE

② HORIZONTAL SECTION

**NOTES:**

1. DETAILS NOT TO SCALE.
2. ELECTRICAL REQUIREMENTS:  
120VAC, 5AMPS MIN. TO OPERATOR BY ELECTRICAL CONTRACTOR.
3. DOORS, FRAMES AND HARDWARE BY OTHERS.
4. 32" CLEAR DOOR OPENING REQUIRED TO MEET A.D.A. REQUIREMENTS.
5. DOORS MUST BE NON-LATCHED FOR PROPER OPERATION.
6. OPERATOR CAN BE CONFIGURED TO MEET ANSI STANDARDS A156.10 & ANSI A156.19