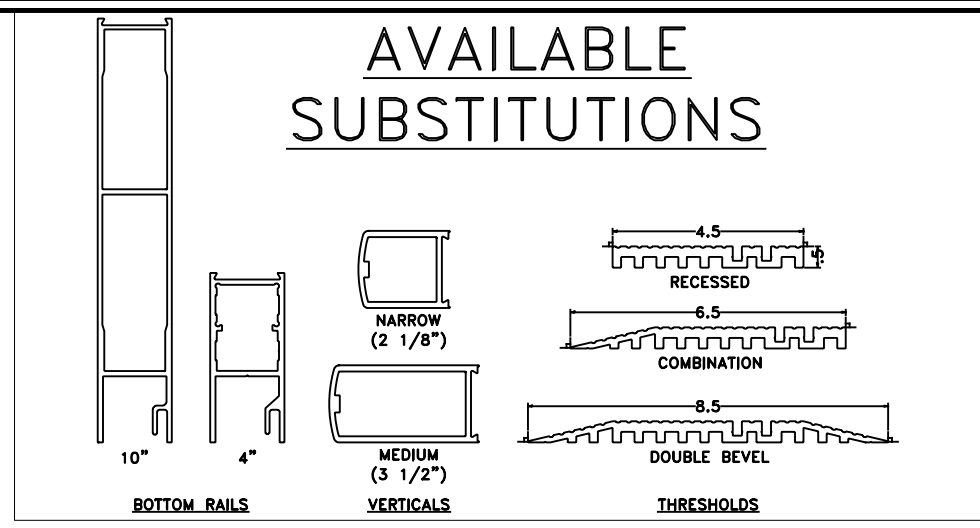


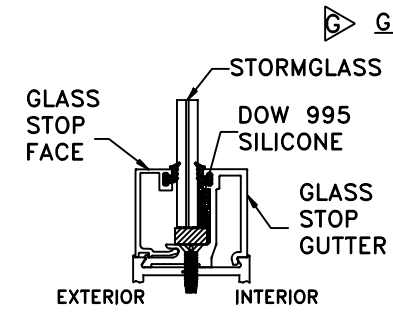
ELEVATION



REV	DESCRIPTION	BY	DATE
B	UPDATED PACKAGE WITH DATA	JESC	06/24/2004
C	ADDED SINGLE SLIDES	JESC	06/30/2005
D	RELEASED	JESC	10/17/2005
E	UPDATED ADDRESS, ADDED NEW T'HOLD, CHANGED DRAWING NUMBER FROM US800199	DSW	08/08/2011
F	NOA REF # CHANGED	DSW	02/20/2013
G	NEW NOA#, REVISED ANCHOR & GLASS SPECS.	DSW	05/02/2016

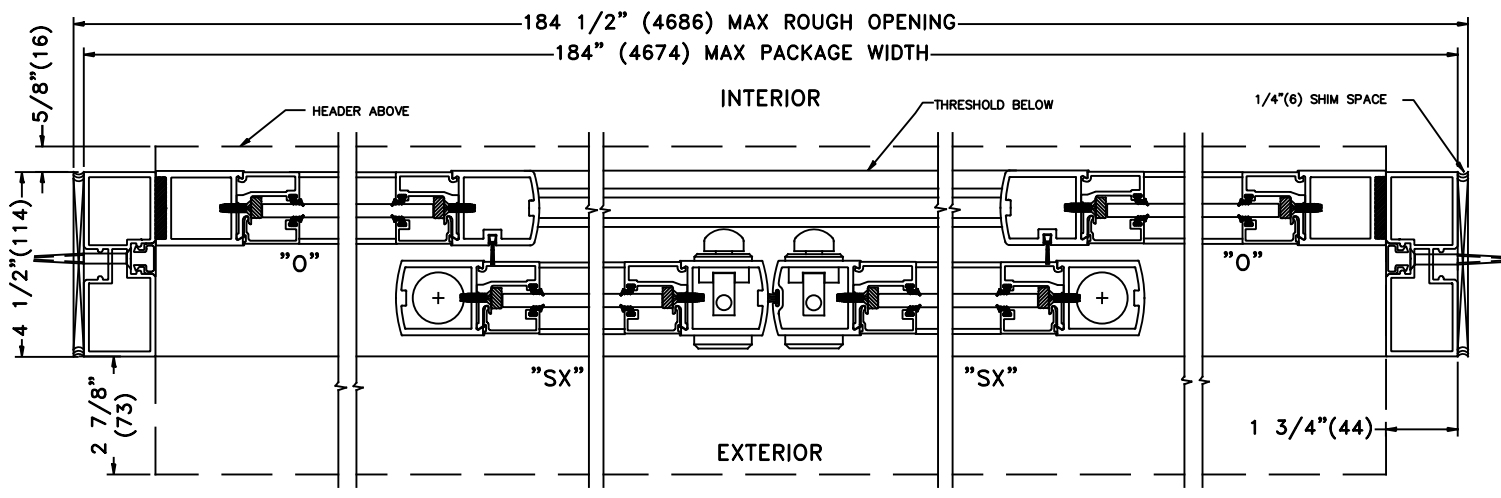
ANCHOR DATA				
SUBSTRATE	MINIMUM REQUIREMENTS	ALLOWABLE LOCATIONS	PENETRATION	EDGE DISTANCE
CONCRETE	3000 PSI	HEADER JAMBS SILL	1 1/2" MIN	2 1/2" MIN
WOOD	SG >= 0.55	HEADER JAMBS SILL	1 1/2" MIN	3/4" MIN
ALUMINUM	6063-T5 - 1/8" THICK	HEADER JAMBS	N/A	3/4" MIN
STEEL	A36 - 1/8" THICK Fu = 58 kst	HEADER JAMBS	N/A	3/4" MIN

NOTES
 1-SEE ELEVATION DETAILS FOR ANCHOR SPACING
 2-MINIMUM PENETRATION IS BEYOND WALL DRESSING
 3-TYPICAL 2 ROWS OF FASTENERS FOR THRESHOLD INSTALLATION
 4-BASE MATERIAL DESIGNED BY OTHERS TO WITHSTAND IMPOSED LOAD

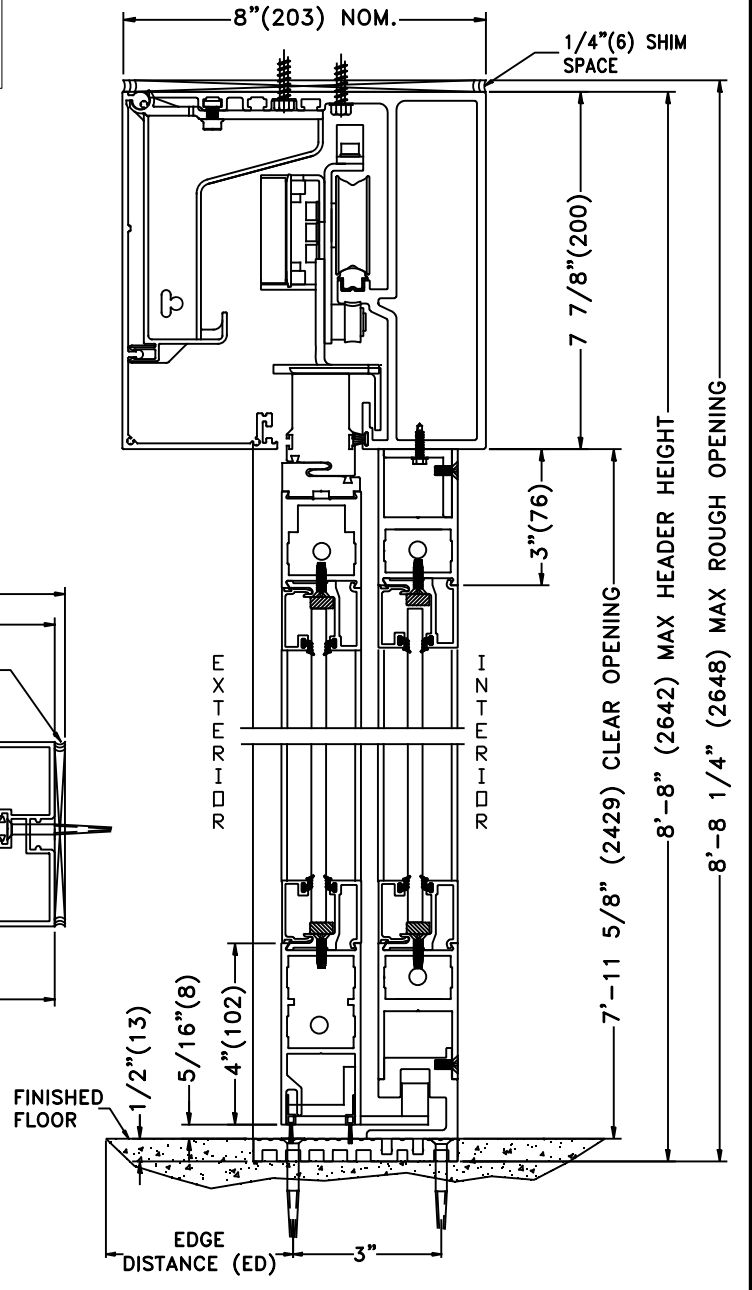


GLAZING DETAILS

GLASS SPECIFICATION
 0.325" OLDCASTLE IMPACT RATED GLASS
 -1/8" HEAT STRENGTHENED GLASS
 -0.075" SAFLEX CP COMPOSITE GLASS INTERLAYER W/PET CORE BY EASTMAN CHEMICAL CO. OR 0.075" STORMGLASS SAFLEX CP INTERLAYER W/PET CORE BY OLDCASTLE BUILDING ENVELOPE INC.
 -1/8" HEAT STRENGTHENED GLASS



HORIZONTAL SECTION

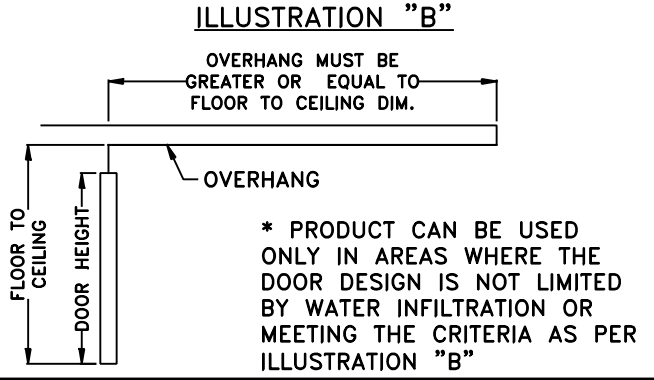


VERTICAL SECTION

DOOR ALLOWABLE DESIGNED PRESSURES

+57*, -57 PSF

LARGE MISSILE IMPACT



PACKAGE HEIGHT INFORMATION		
MAX PACKAGE HEIGHT	MASONRY OPENING	NOM. CLEAR DOOR OPENING
8'-8" (104")	8'-8 1/4" (104 1/4")	95 5/8"

PACKAGE WIDTH INFORMATION				
MAX PACKAGE WIDTH	MASONRY OPENING	NOM. CLEAR DOOR OPENING	SLIDING DOOR PANEL NOM. WIDTH	EMERGENCY BREAKOUT NOM. WIDTH
15'-4" (184")	15'-4 1/2" (184 1/2")	77 3/4"	46 7/8"	86 3/4"

TORMAX USA Inc.
 12859 WETMORE RD, SAN ANTONIO, TX. 78247

DO NOT SCALE PRINT
 TOLERANCES UNLESS OTHERWISE SPECIFIED
 .XX ± .010
 .XXX ± .005
 ∓ ± .5"

TORMAX AUTOMATIC

MATERIAL: N/A
 FINISH: N/A

NOTE:
 1. ALL DIMENSIONS ARE IN INCHES TO THEORETICAL POINTS.
 2. BREAK ALL SHARP EDGES AND DEBURR.

DATE: 06/24/2004

REF. NOA 16-0202.14

SIZE: A
 DRAWN BY: Jesus C.
 Dwg. No. - Revision: US801168-G

SHEET Page 1 of 1