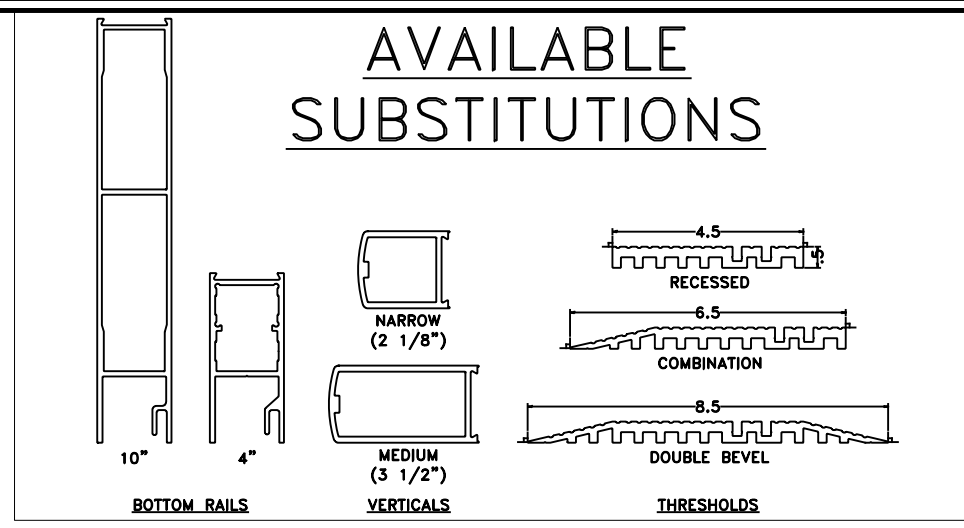
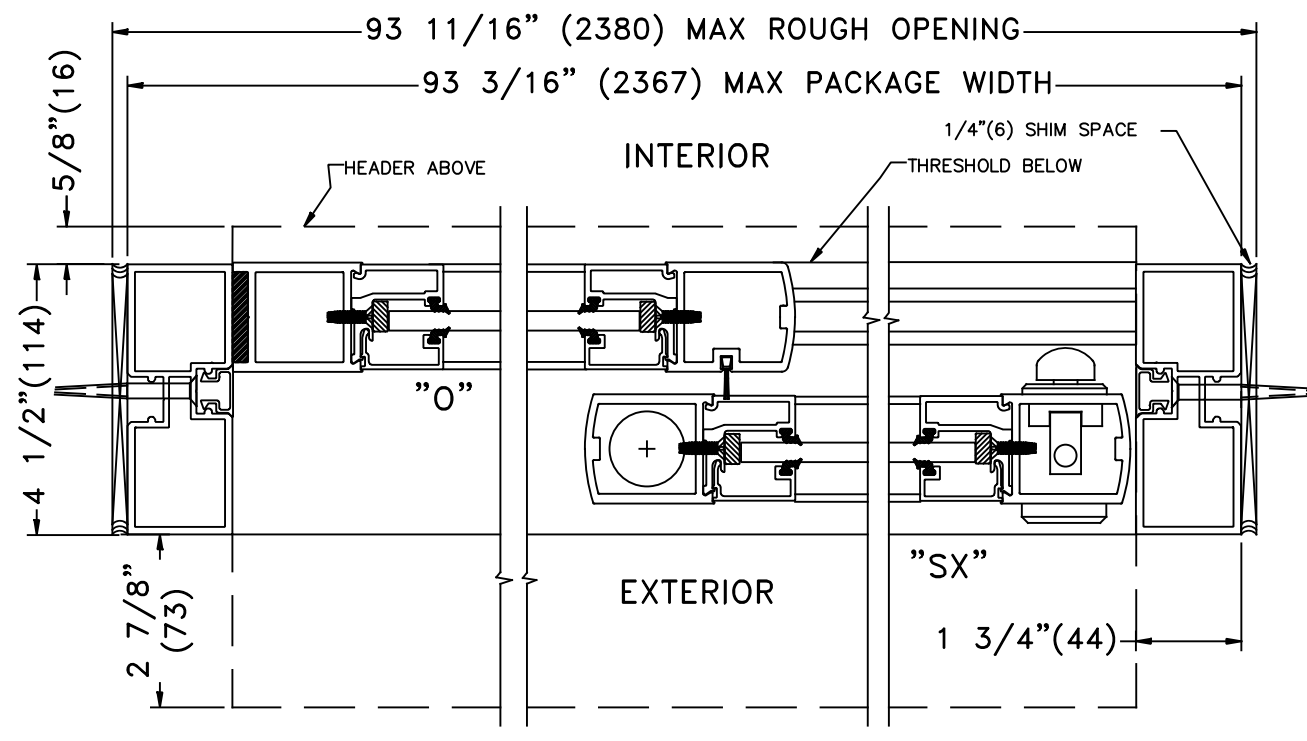
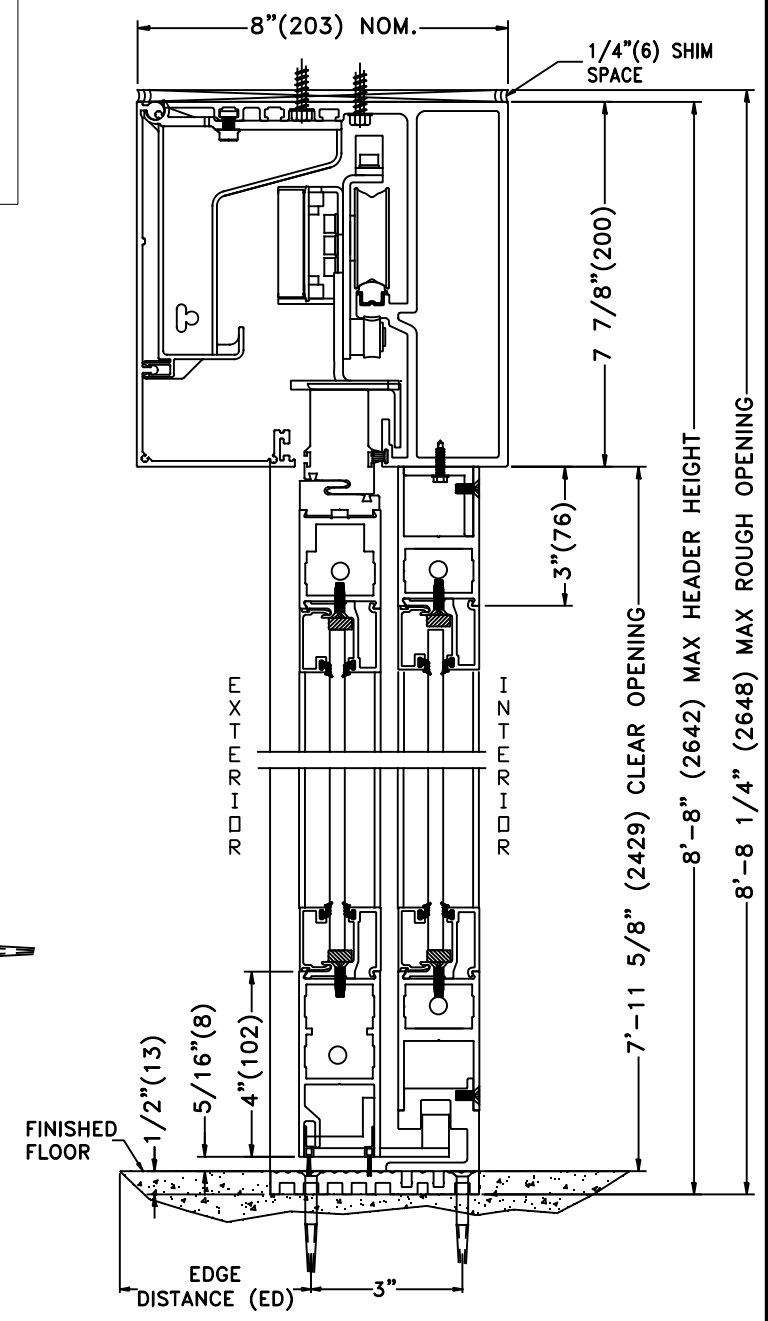


AVAILABLE SUBSTITUTIONS



REV	DESCRIPTION	BY	DATE
B	UPDATED PACKAGE WITH DATA	JESC	06/24/2004
C	ADDED SINGLE SLIDES	JESC	06/30/2005
D	RELEASED	JESC	10/17/2005
E	UPDATED ADDRESS, ADDED NEW T'HOLD, CHANGED DRAWING NUMBER FROM US800199	DSW	08/08/2011
F	NOA REF # CHANGED	DSW	02/20/2013
G	NEW NOA#, REVISED ANCHOR & GLASS SPECS.	DSW	05/02/2016



SUBSTRATE	MINIMUM REQUIREMENTS	ALLOWABLE LOCATIONS	PENETRATION	EDGE DISTANCE
CONCRETE	3000 PSI	HEADER JAMBS SILL	1 1/2" MIN	2 1/2" MIN
WOOD	SG >= 0.55	HEADER JAMBS SILL	1 1/2" MIN	3/4" MIN
ALUMINUM	6063-T5 - 1/8" THICK	HEADER JAMBS	N/A	3/4" MIN
STEEL	A36 - 1/8" THICK Fu = 58 kst	HEADER JAMBS	N/A	3/4" MIN

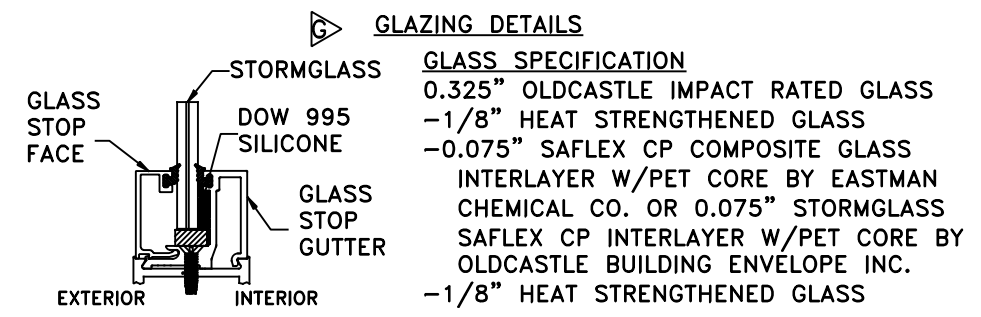
NOTES

1-SEE ELEVATION DETAILS FOR ANCHOR SPACING

2-MINIMUM PENETRATION IS BEYOND WALL DRESSING

3-TYPICAL 2 ROWS OF FASTENERS FOR THRESHOLD INSTALLATION

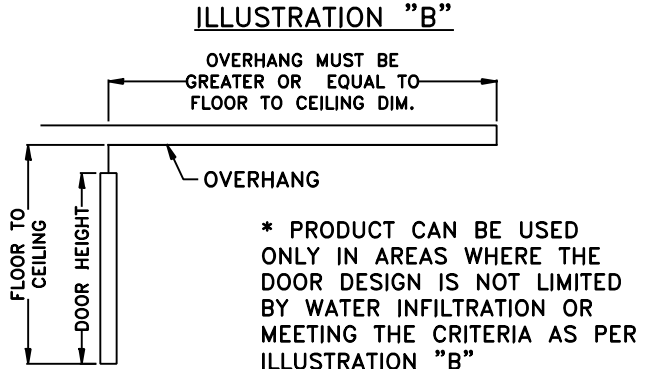
4-BASE MATERIAL DESIGNED BY OTHERS TO WITHSTAND IMPOSED LOAD



DOOR ALLOWABLE DESIGNED PRESSURES

+57*, -57 PSF

LARGE MISSILE IMPACT



MAX PACKAGE HEIGHT	MASONRY OPENING	NOM. CLEAR DOOR OPENING
8'-8" (104")	8'-8 1/4" (104 1/4")	95 5/8"

MAX PACKAGE WIDTH	MASONRY OPENING	NOM. CLEAR DOOR OPENING	SLIDING DOOR PANEL NOM. WIDTH	EMERGENCY BREAKOUT NOM. WIDTH
7'-9 3/16" (93 3/16")	7'-9 11/16" (93 11/16")	38 5/8"	46 1/2"	43 1/8"

TORMAX USA Inc.
12859 WETMORE RD, SAN ANTONIO, TX. 78247

DO NOT SCALE PRINT TOLERANCES UNLESS OTHERWISE SPECIFIED

.XX ± .010
.XXX ± .005
∓ ± .5"

TORMAX AUTOMATIC

MATERIAL: N/A
FINISH: N/A

SCALE: None

DATE: 06/24/2004

SHEET: Page 1 of 1

TITLE: 9200 IMPACT, SINGLES

REF. NOA 16-0202.14

SIZE: A

DRAWN BY: Jesus C.

DESIGN NO.: US801169-G