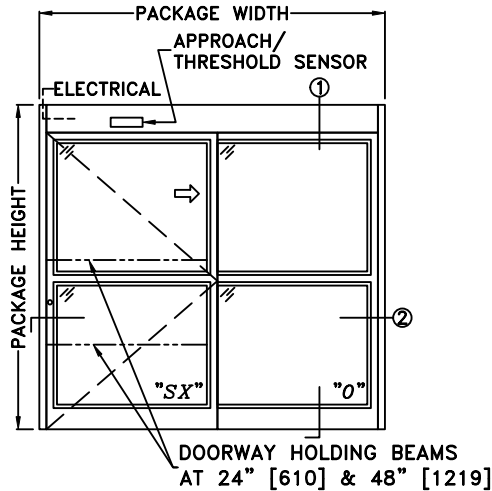
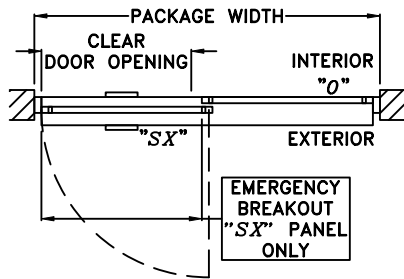


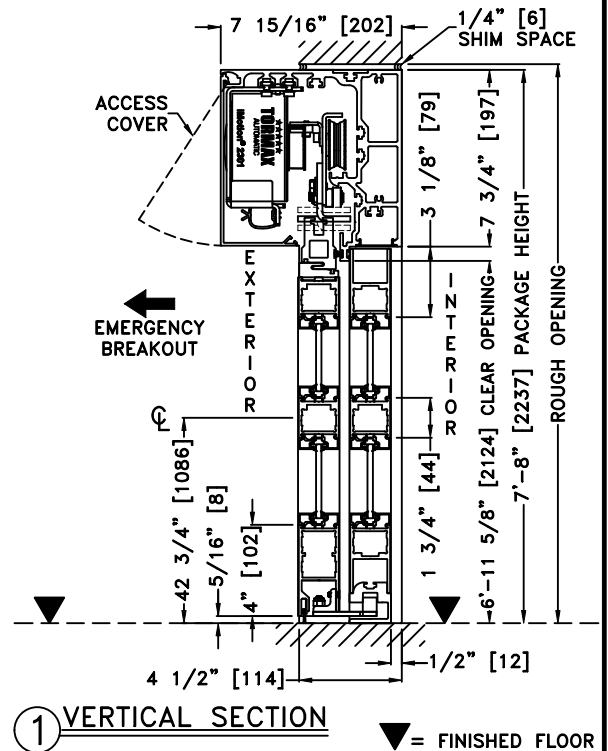
JOB NAME: _____ DATE: _____
 DOOR LOCATION: _____ DOOR NO: _____ SHEET ____ OF ____



ELEVATION

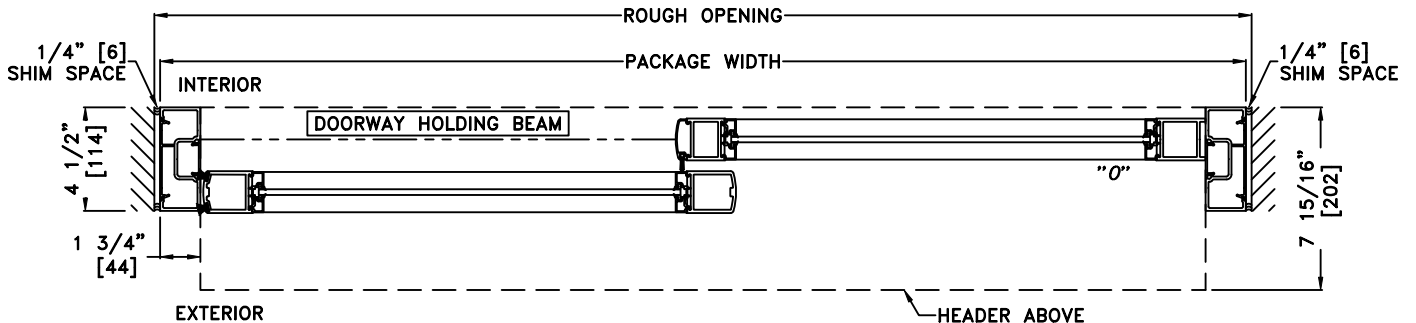


PLAN



1 VERTICAL SECTION

▼ = FINISHED FLOOR



2 HORIZONTAL SECTION

*SEE APPENDIX FOR DETAILS OF TX9200 HEAVY DUTY DRIVE SYSTEM & THRESHOLD OPTIONS

NOTES:

1. DETAILS NOT TO SCALE
2. ELECTRICAL REQUIREMENTS:
120 VAC, 5 AMPS MIN. TO OPERATOR BY ELECTRICAL CONTRACTOR
3. DOOR PACKAGES ARE INDIVIDUALLY ENGINEERED TO FIT YOUR JOB REQUIREMENTS

| SAMPLE PACKAGE WIDTH INFORMATION | | | |
|--|---|----------------------------------|-------------------------------|
| PACKAGE WIDTH [UW] (*) | CLEAR DOOR OPENING [CDO] (*) | PANEL WIDTH [PW] (*) | EMERGENCY BREAKOUT WIDTH (*) |
| $2*[CDO] + 13 \frac{1}{4}$ | $[UW] \frac{1}{2} - 6 \frac{5}{8}$ -OR- $[PW] - 6 \frac{1}{8}$ | $[UW] \frac{1}{2} - \frac{1}{2}$ | $[UW] - [PW] - 3 \frac{1}{2}$ |
| 7'-0" [2134] | 35 3/8" [899] | 41 1/2" [1054] | 39" [991] |
| 8'-0" [2438] | 41 3/8" [1051] | 47 1/2" [1207] | 45" [1143] |
| 9'-0" [2743] | 47 3/8" [1203] | 53 1/2" [1359] | 51" [1295] |
| (*) CALCULATIONS BASED ON EQUAL PANELS, 2 1/8" NARROW STILES, & 1/4" GLASS | | | |