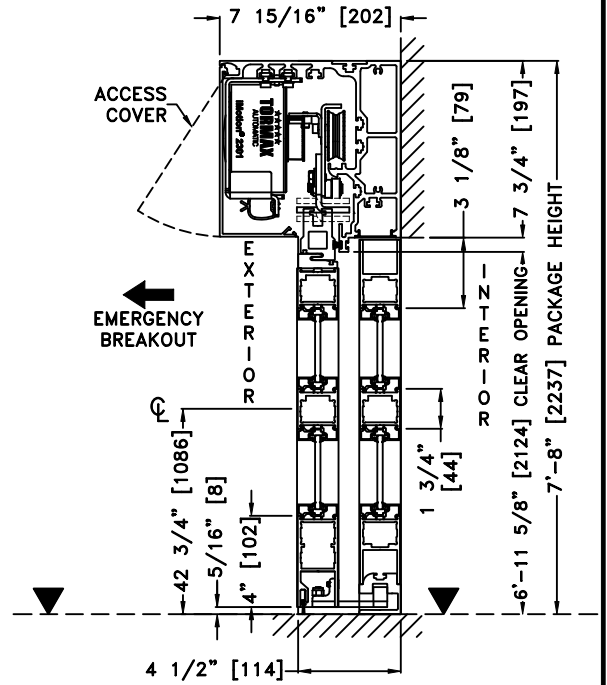
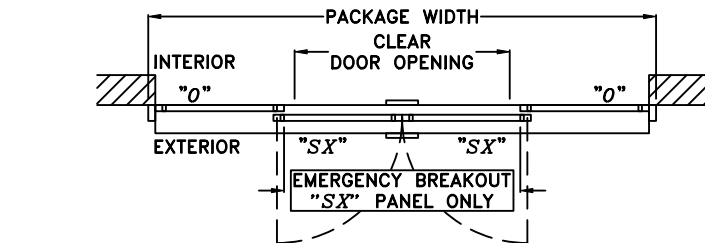
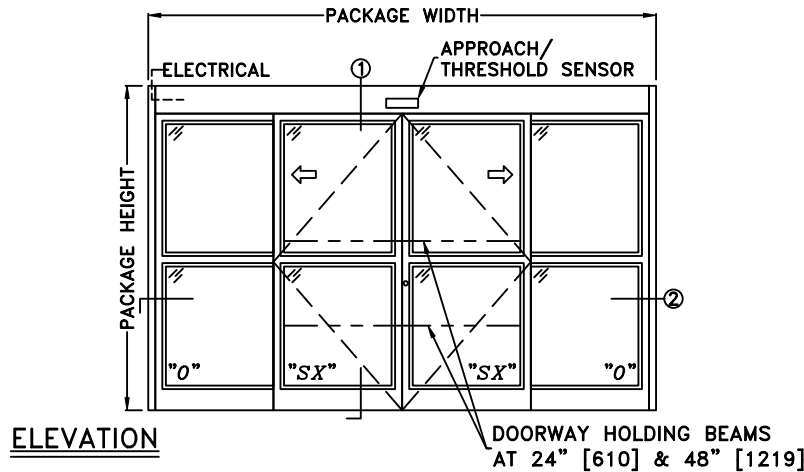
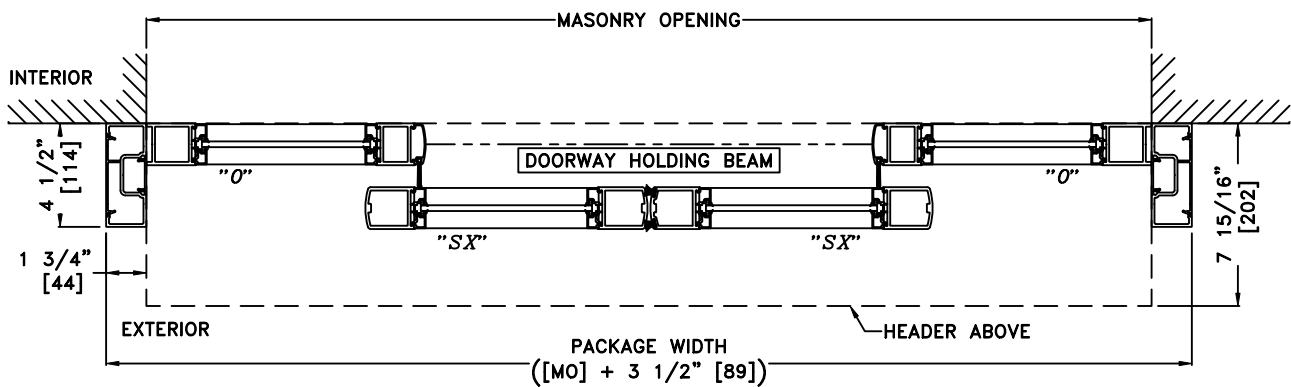


JOB NAME: \_\_\_\_\_ DATE: \_\_\_\_\_  
 DOOR LOCATION: \_\_\_\_\_ DOOR NO: \_\_\_\_\_ SHEET \_\_\_\_ OF \_\_\_\_



**PLAN**

**1 VERTICAL SECTION** ▼ = FINISHED FLOOR



**2 HORIZONTAL SECTION**

\*SEE APPENDIX FOR DETAILS OF TX9200 HEAVY DUTY DRIVE SYSTEM & THRESHOLD OPTIONS

**NOTES:**

1. DETAILS NOT TO SCALE
2. ELECTRICAL REQUIREMENTS: 120 VAC, 5 AMPS MIN. TO OPERATOR BY ELECTRICAL CONTRACTOR
3. DOOR PACKAGES ARE INDIVIDUALLY ENGINEERED TO FIT YOUR JOB REQUIREMENTS

SAMPLE PACKAGE WIDTH INFORMATION			
PACKAGE WIDTH [UW] (*)	CLEAR DOOR OPENING [CDO] (*)	PANEL WIDTH [PW] (*)	EMERGENCY BREAKOUT WIDTH (*)
2*[CDO] + 23 1/8	[UW] 1/2 - 11 9/16 -OR- 2*[PW] - 12 7/16	[UW] 1/4 + 7/16	[UW] - 2*[PW] - 3 1/2
10'-0" [3048]	48 7/16" [1230]	30 7/16" [773]	55 5/8" [1413]
12'-0" [3658]	60 7/16" [1535]	36 7/16" [926]	67 5/8" [1718]
14'-0" [4267]	72 7/16" [1840]	42 7/16" [1078]	79 5/8" [2022]
(*) CALCULATIONS BASED ON EQUAL PANELS, 2 1/8" NARROW STILES, & 1/4" GLASS			