

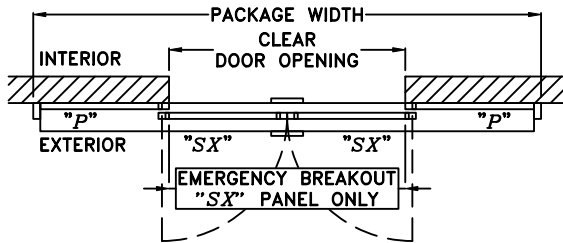
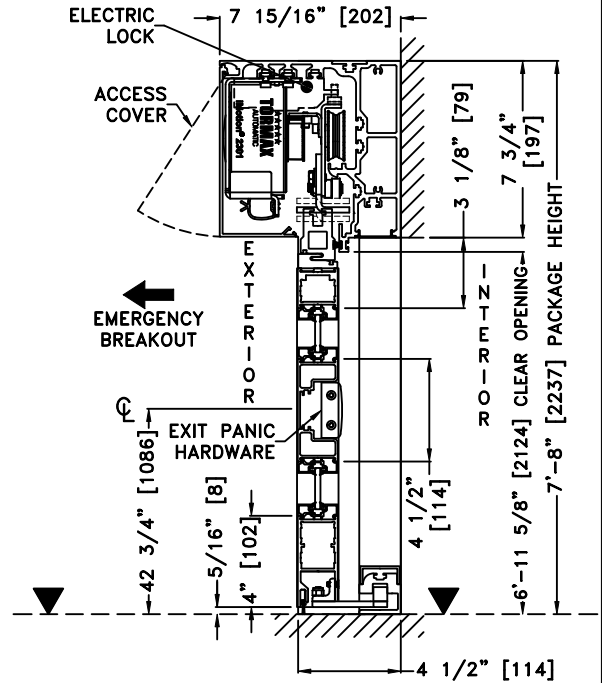
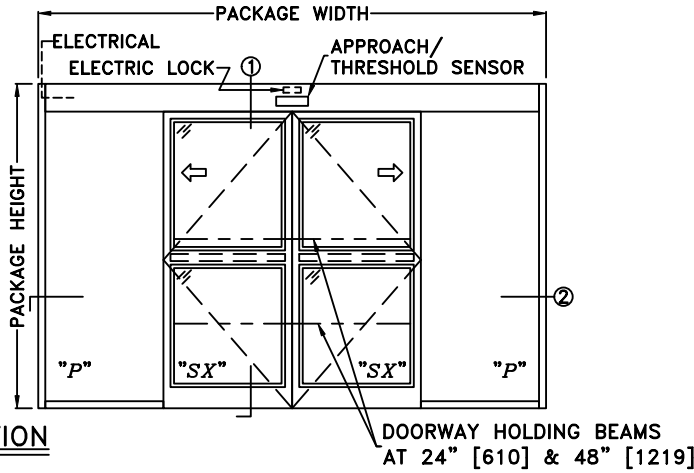


TX9200SMAC AUTOMATIC SLIDING DOOR SYSTEM

BIPART SURFACE MOUNT OUTSIDE SLIDE "P" PANEL APPLICATION
(P-SX-SX-P) W/ELECTRIC LOCK & FLUSH MOUNT EXIT PANIC HW

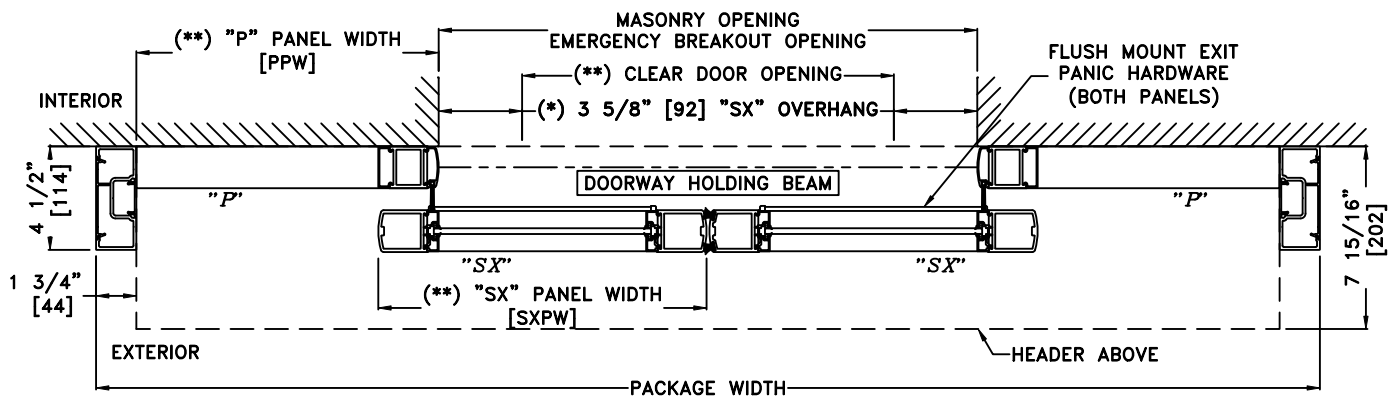
JOB NAME: _____ DATE: _____

DOOR LOCATION: _____ DOOR NO: _____ SHEET ____ OF ____



PLAN

1 VERTICAL SECTION ▼ = FINISHED FLOOR



2 HORIZONTAL SECTION

*SEE APPENDIX FOR DETAILS OF TX9200 HEAVY DUTY DRIVE SYSTEM, THRESHOLD OPTIONS, & SURFACE MOUNT CONCEALED VERTICAL ROD EXIT PANIC HARDWARE OPTION

NOTES:

1. DETAILS NOT TO SCALE
2. ELECTRICAL REQUIREMENTS: 120 VAC, 5 AMPS MIN. TO OPERATOR BY ELECTRICAL CONTRACTOR
3. DOOR PACKAGES ARE INDIVIDUALLY ENGINEERED TO FIT YOUR JOB REQUIREMENTS

SAMPLE PACKAGE WIDTH INFORMATION			
PACKAGE WIDTH [UW] (*)	CLEAR DOOR OPENING [CDO] (*)	PANEL WIDTH [PW] (*)	EMERGENCY BREAKOUT WIDTH (*)
$2*[CDO] + 23 \frac{1}{8}$	$[UW]_{\frac{1}{2}} - 11 \frac{9}{16}$ -OR- $2*[PW] - 12 \frac{7}{16}$	$[UW]_{\frac{1}{4}} + \frac{7}{16}$	$[UW] - 2*[PW] - 3 \frac{1}{2}$
10'-0" [3048]	48 7/16" [1230]	30 7/16" [773]	55 5/8" [1413]
12'-0" [3658]	60 7/16" [1535]	36 7/16" [926]	67 5/8" [1718]
14'-0" [4267]	72 7/16" [1840]	42 7/16" [1078]	79 5/8" [2022]

(*) CALCULATIONS BASED ON EQUAL PANELS, 2 1/8" NARROW STILES, & 1/4" GLASS
(**) TO OPEN SX PANEL FLUSH WITH EDGE OF MO, USE THE FOLLOWING FORMULAS:
[SXPW] = [MO]₂ + 2 9/16 | [PPW] = [MO]₂ + 4 13/16 | [UW] = 2*[MO] + 13 1/8