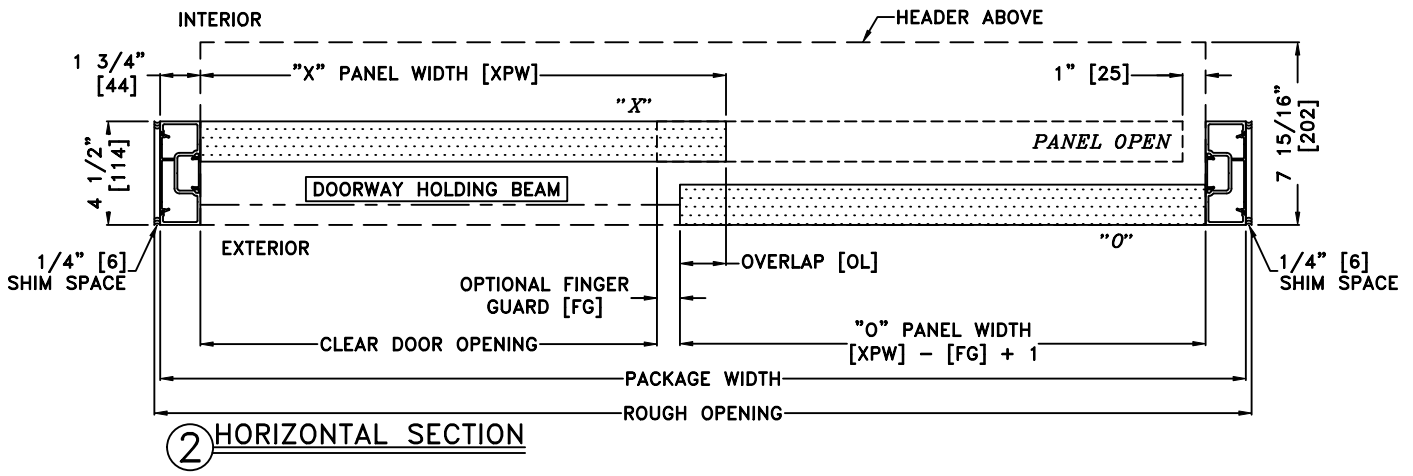
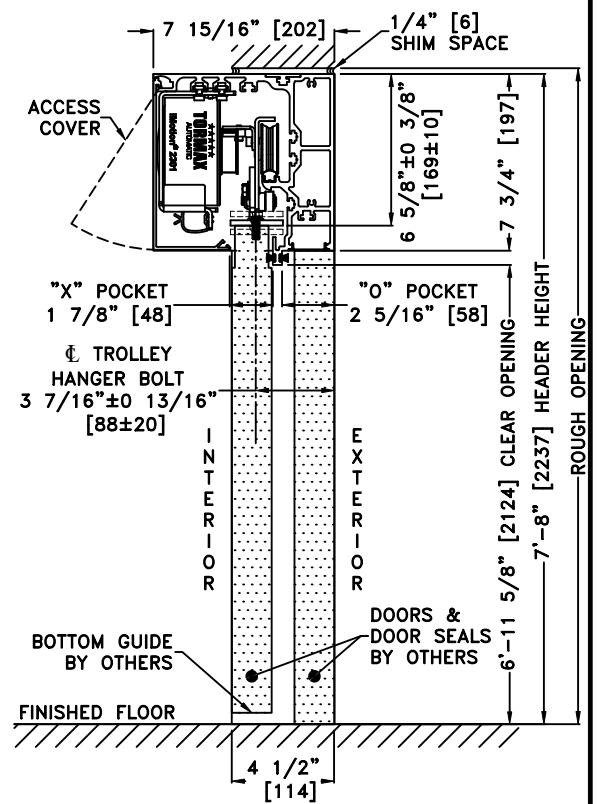
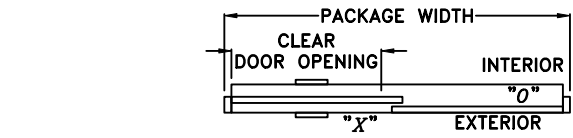
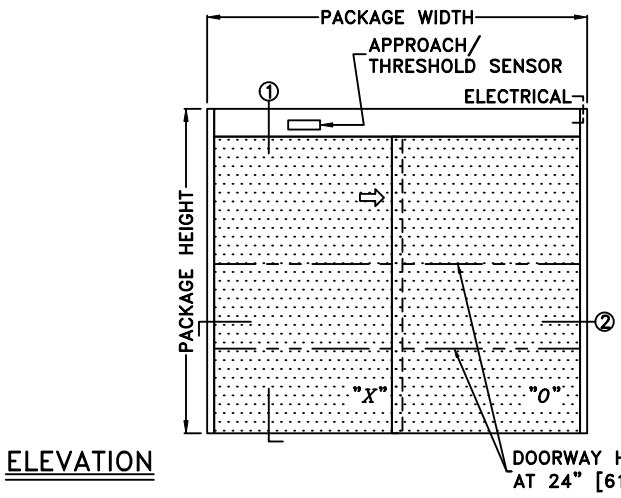


JOB NAME: \_\_\_\_\_ DATE: \_\_\_\_\_  
 DOOR LOCATION: \_\_\_\_\_ DOOR NO: \_\_\_\_\_ SHEET \_\_\_\_ OF \_\_\_\_



\*SEE APPENDIX FOR DETAILS OF TX9300 HEAVY DUTY DRIVE SYSTEM

- NOTES:
1. DETAILS NOT TO SCALE
  2. ELECTRICAL REQUIREMENTS: 120 VAC, 5 AMPS MIN. TO OPERATOR BY ELECTRICAL CONTRACTOR
  3. DOOR PACKAGES ARE INDIVIDUALLY ENGINEERED TO FIT YOUR JOB REQUIREMENTS
  4. DOOR GUIDE RECOMMENDED & TO BE SUPPLIED BY OTHERS

SAMPLE PACKAGE WIDTH INFORMATION (13.1)		
PACKAGE WIDTH [UW]	CLEAR DOOR OPENING [CDO]	PANEL WIDTH [PW]
2*[CDO] + 2*[OL] + 4*[FG] + 5 1/2"	[UW] 1/2 - [OL] 1/2 - [FG] - 1 3/4 -OR- [PW] - [OL] - [FG]	([UW]+[OL])/2 - 1 3/4
7'-0" [2134]	38 1/4" [972] (*)	41 1/4" [1048] (*)
8'-0" [2438]	44 1/4" [1124] (*)	47 1/4" [1200] (*)
9'-0" [2743]	50 1/4" [1276] (*)	53 1/4" [1353] (*)
DIMENSIONS NOMINAL		
(*) CALCULATIONS BASED ON 2"[51] OVERLAP [OL] & 1"[25] FINGER GUARD [FG]		