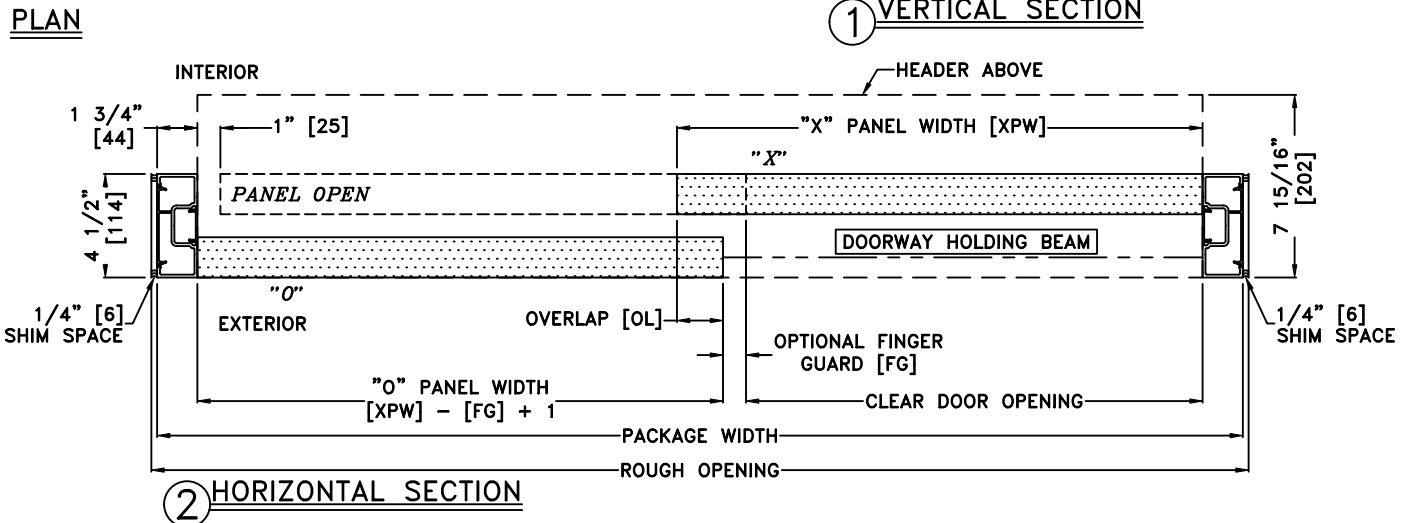
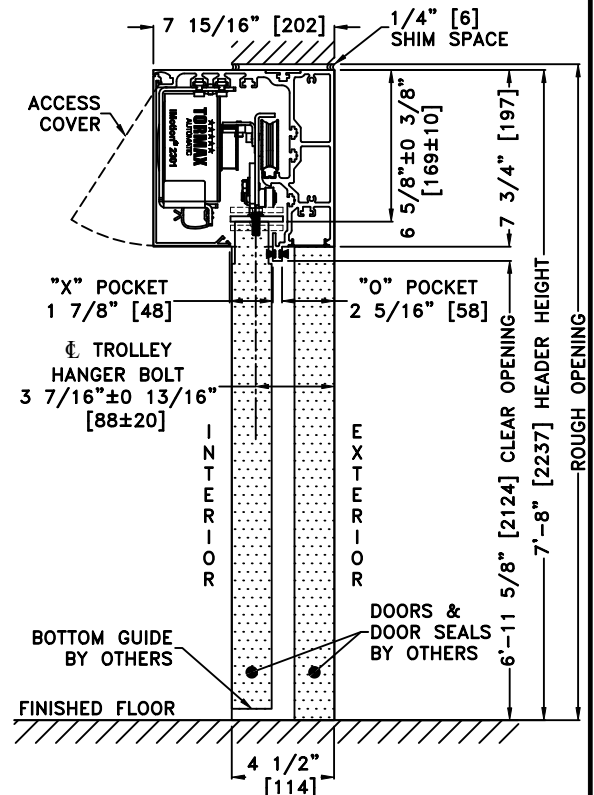
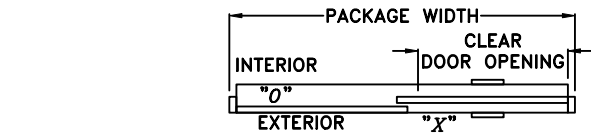
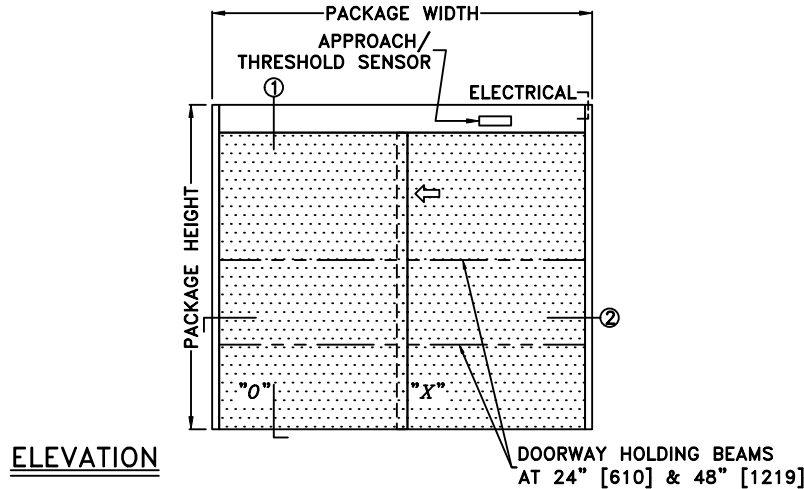


JOB NAME: \_\_\_\_\_ DATE: \_\_\_\_\_  
 DOOR LOCATION: \_\_\_\_\_ DOOR NO: \_\_\_\_\_ SHEET \_\_\_\_ OF \_\_\_\_



\*SEE APPENDIX FOR DETAILS OF TX9300 HEAVY DUTY DRIVE SYSTEM

NOTES:

1. DETAILS NOT TO SCALE
2. ELECTRICAL REQUIREMENTS: 120 VAC, 5 AMPS MIN. TO OPERATOR BY ELECTRICAL CONTRACTOR
3. DOOR PACKAGES ARE INDIVIDUALLY ENGINEERED TO FIT YOUR JOB REQUIREMENTS
4. DOOR GUIDE RECOMMENDED & TO BE SUPPLIED BY OTHERS

SAMPLE PACKAGE WIDTH INFORMATION (14.1)		
PACKAGE WIDTH [UW]	CLEAR DOOR OPENING [CDO]	PANEL WIDTH [PW]
$2*[CDO] + 2*[OL] + 4*[FG] + 5 \frac{1}{2}$	$[UW] \frac{1}{2} - [OL] \frac{1}{2} - [FG] - 1 \frac{3}{4}$ -OR- $[PW] - [OL] - [FG]$	$([UW] + [OL]) / 2 - 1 \frac{3}{4}$
7'-0" [2134]	38 1/4" [972] (*)	41 1/4" [1048] (*)
8'-0" [2438]	44 1/4" [1124] (*)	47 1/4" [1200] (*)
9'-0" [2743]	50 1/4" [1276] (*)	53 1/4" [1353] (*)

DIMENSIONS NOMINAL  
 (\*) CALCULATIONS BASED ON 2"[51] OVERLAP [OL] & 1"[25] FINGER GUARD [FG]