

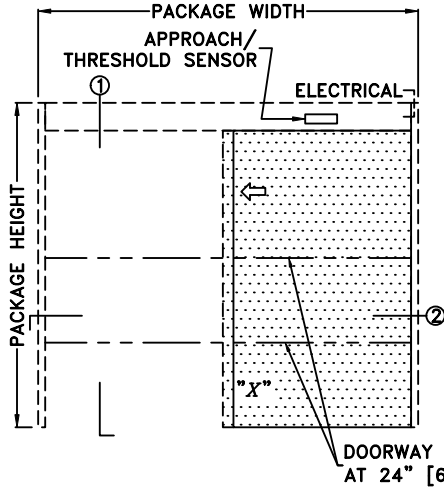


TX9300FM AUTOMATIC SLIDING DOOR SYSTEM

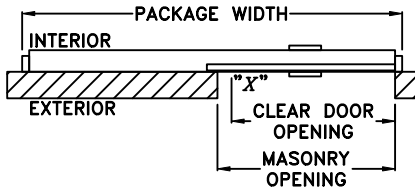
SINGLE, L.H. SURFACE FLUSH WALL MOUNT UTILITY PACKAGE

JOB NAME: _____ DATE: _____

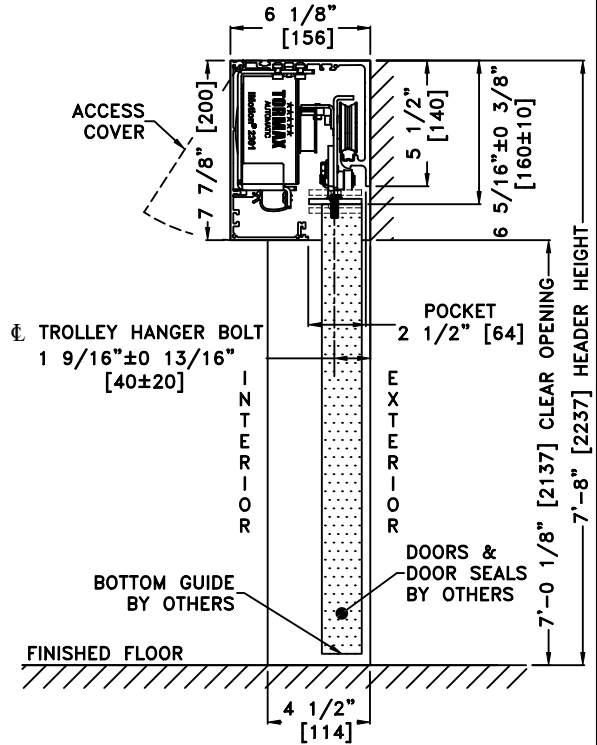
DOOR LOCATION: _____ DOOR NO: _____ SHEET ____ OF ____



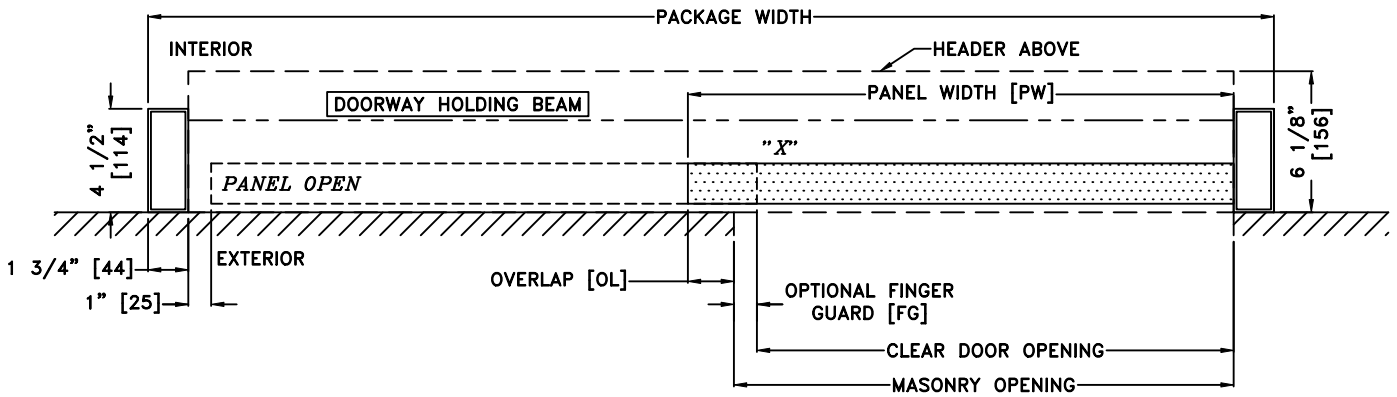
ELEVATION



PLAN



1 VERTICAL SECTION



2 HORIZONTAL SECTION

*SEE APPENDIX FOR DETAILS OF TX9300 HEAVY DUTY DRIVE SYSTEM

- NOTES:
1. DETAILS NOT TO SCALE
 2. ELECTRICAL REQUIREMENTS: 120 VAC, 5 AMPS MIN. TO OPERATOR BY ELECTRICAL CONTRACTOR
 3. DOOR PACKAGES ARE INDIVIDUALLY ENGINEERED TO FIT YOUR JOB REQUIREMENTS
 4. DOOR GUIDE RECOMMENDED & TO BE SUPPLIED BY OTHERS

SAMPLE PACKAGE WIDTH INFORMATION (14)		
PACKAGE WIDTH [UW]	CLEAR DOOR OPENING [CDO]	PANEL WIDTH [PW]
$2*[MO] + [OL] - [FG] + 4 \frac{1}{2}$	$[UW] - [MO] - [OL] - 4 \frac{1}{2}$ -OR- $([UW]-[FG]-[OL])/2 - 2 \frac{1}{4}$	$[MO] + [OL]$ -OR- $([UW] + [OL] + [FG])/2 - 2 \frac{1}{4}$
7'-0" [2134]	38 1/4" [972] (*)	41 1/4" [1048] (*)
8'-0" [2438]	44 1/4" [1124] (*)	47 1/4" [1200] (*)
9'-0" [2743]	50 1/4" [1276] (*)	53 1/4" [1353] (*)
DIMENSIONS NOMINAL		
(*) CALCULATIONS BASED ON 2"[51] OVERLAP [OL] & 1"[25] FINGER GUARD [FG]		