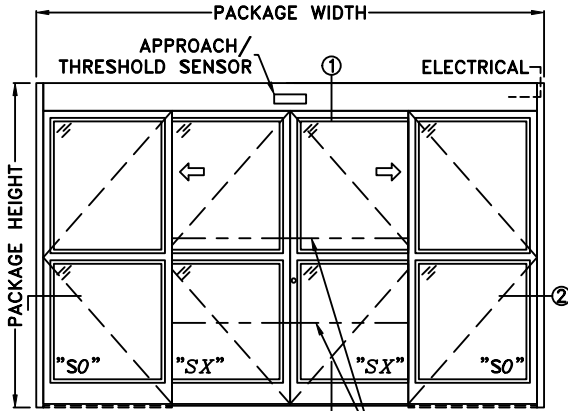


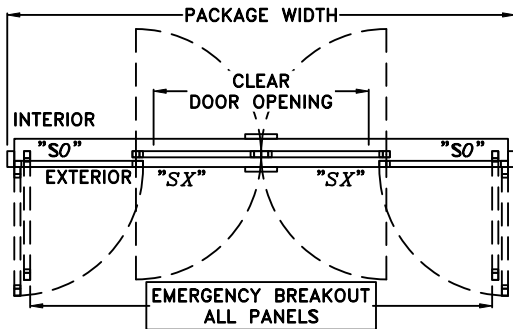
JOB NAME: _____ DATE: _____

DOOR LOCATION: _____ DOOR NO: _____ SHEET ____ OF ____

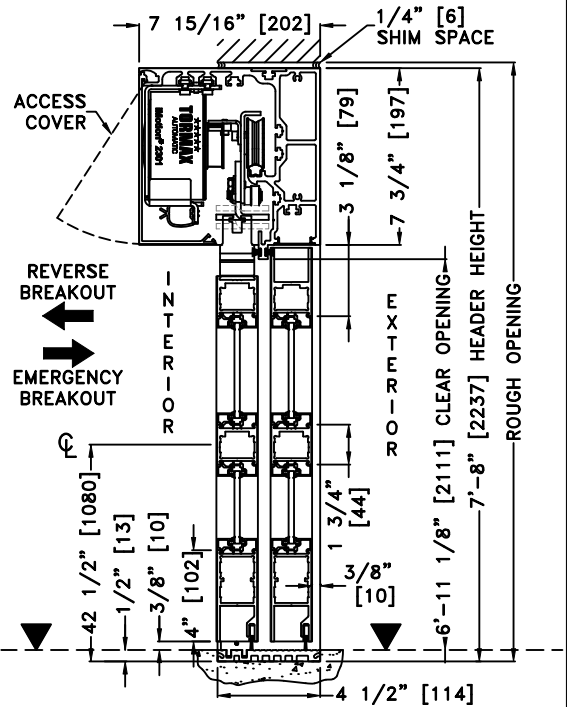


ELEVATION

DOORWAY HOLDING BEAMS
 AT 24" [610] & 48" [1219]

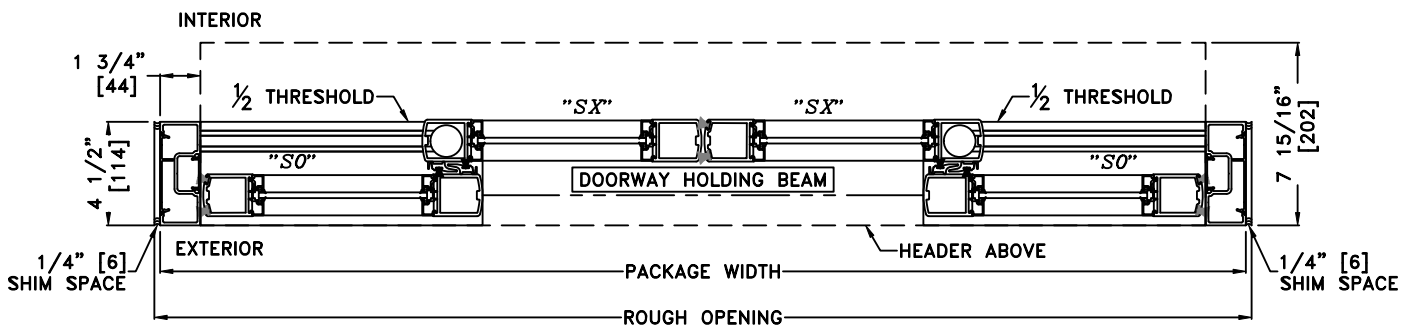


PLAN



① VERTICAL SECTION

▼ = FINISHED FLOOR



② HORIZONTAL SECTION

*SEE APPENDIX FOR THRESHOLD OPTIONS

- NOTES:
1. DETAILS NOT TO SCALE
 2. ELECTRICAL REQUIREMENTS: 120 VAC, 5 AMPS MIN. TO OPERATOR BY ELECTRICAL CONTRACTOR
 3. DOOR PACKAGES ARE INDIVIDUALLY ENGINEERED TO FIT YOUR JOB REQUIREMENTS

SAMPLE PACKAGE WIDTH INFORMATION				
PACKAGE WIDTH [UW] (*)	CLEAR DOOR OPENING [CDO] (*)	PANEL WIDTH [PW] (*)	DOUBLE BREAKOUT WIDTH (*)	EMERGENCY BREAKOUT WIDTH (*)
$2*[CDO] + 23 \frac{3}{8}$	$\frac{[UW]}{2} - 11 \frac{1}{16}$ -OR- $2*[PW] - 12 \frac{3}{8}$	$\frac{[UW]}{4} + \frac{3}{8}$	$2*[PW] - 5 \frac{1}{8}$	$[UW] - 14 \frac{3}{8}$
10'-0" [3048]	48 5/16" [1227]	30 3/8" [772]	55 9/16" [1411]	105 5/8" [2683]
12'-0" [3658]	60 5/16" [1532]	36 3/8" [924]	67 1/2" [1715]	129 5/8" [3292]
14'-0" [4267]	72 5/16" [1837]	42 3/8" [1076]	84 3/4" [2153]	153 5/8" [3902]
(*) CALCULATIONS BASED ON EQUAL PANELS, 2 1/8" NARROW STILES, & 1/4" GLASS				