

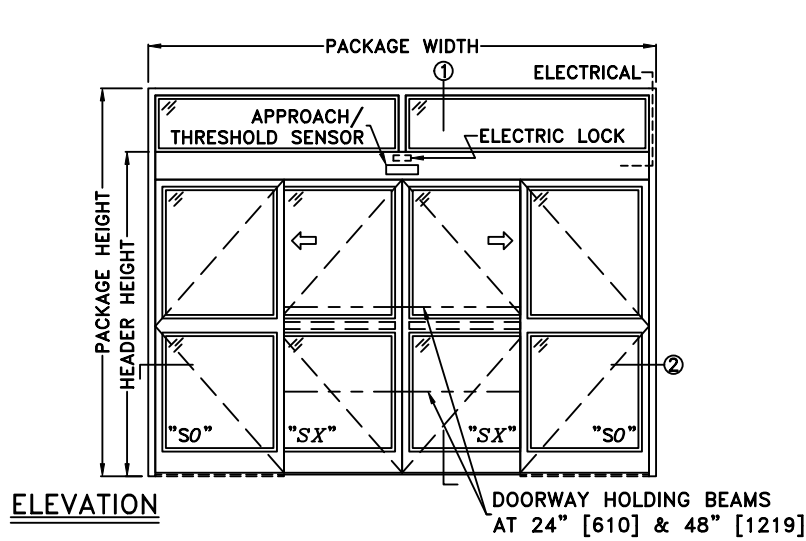


TX9300AC AUTOMATIC SLIDING DOOR SYSTEM

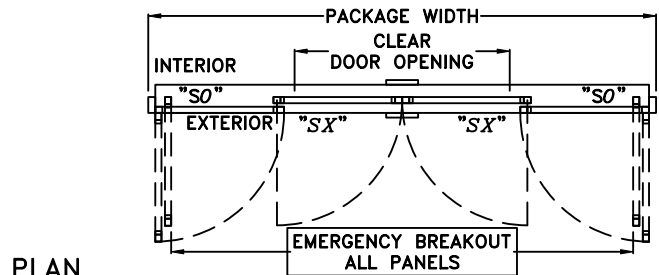
BIPART INSIDE SLIDE APPLICATION W/TRANSOM (SO-SX-SX-SO)
W/ELECTRIC LOCK & FLUSH MOUNT EXIT PANIC HW

JOB NAME: _____ DATE: _____

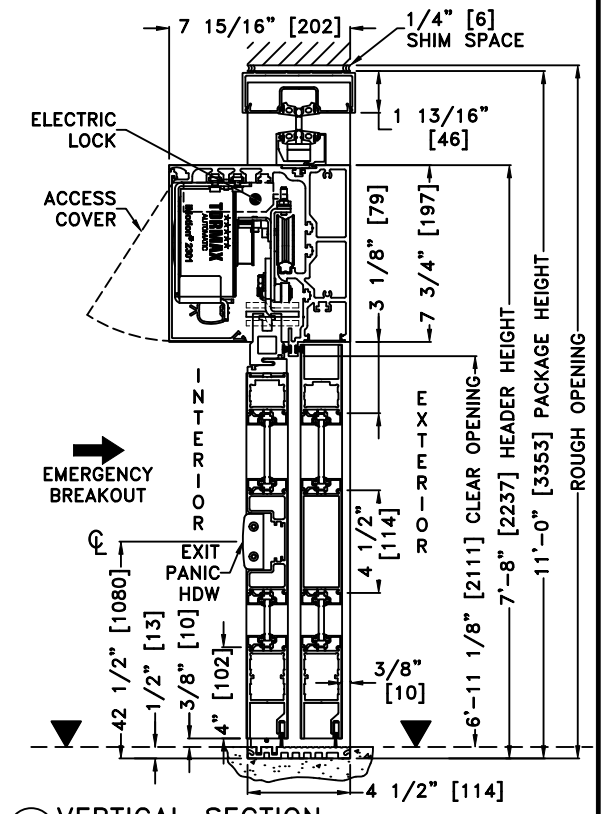
DOOR LOCATION: _____ DOOR NO: _____ SHEET ____ OF ____



ELEVATION

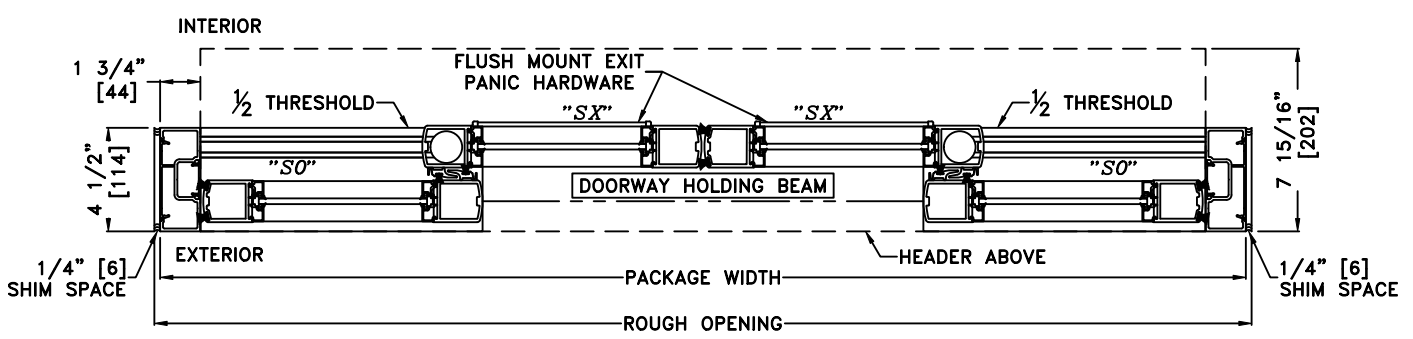


PLAN



1 VERTICAL SECTION

▼ = FINISHED FLOOR



2 HORIZONTAL SECTION

*SEE APPENDIX FOR DETAILS OF TX9300 HEAVY DUTY DRIVE SYSTEM, THRESHOLD OPTIONS, & SURFACE MOUNT CONCEALED VERTICAL ROD EXIT PANIC HARDWARE OPTION (2.2.F)

- NOTES:
1. DETAILS NOT TO SCALE
 2. ELECTRICAL REQUIREMENTS:
120 VAC, 5 AMPS MIN. TO OPERATOR BY ELECTRICAL CONTRACTOR
 3. DOOR PACKAGES ARE INDIVIDUALLY ENGINEERED TO FIT YOUR JOB REQUIREMENTS

SAMPLE PACKAGE WIDTH INFORMATION			
PACKAGE WIDTH [UW] (*)	CLEAR DOOR OPENING [CDO] (*)	PANEL WIDTH [PW] (*)	EMERGENCY BREAKOUT WIDTH (*)
2*[CDO] + 23 3/8	[UW]/2 - 11 1/16 -OR- 2*[PW] - 12 3/8	[UW]/4 + 3/8	[UW] - 14 3/8
10'-0" [3048]	48 5/16" [1227]	30 3/8" [772]	105 5/8" [2683]
12'-0" [3658]	60 5/16" [1532]	36 3/8" [924]	129 5/8" [3292]
14'-0" [4267]	72 5/16" [1837]	42 3/8" [1076]	153 5/8" [3902]
(*) CALCULATIONS BASED ON EQUAL PANELS, 2 1/8" NARROW STILES, & 1/4" GLASS			