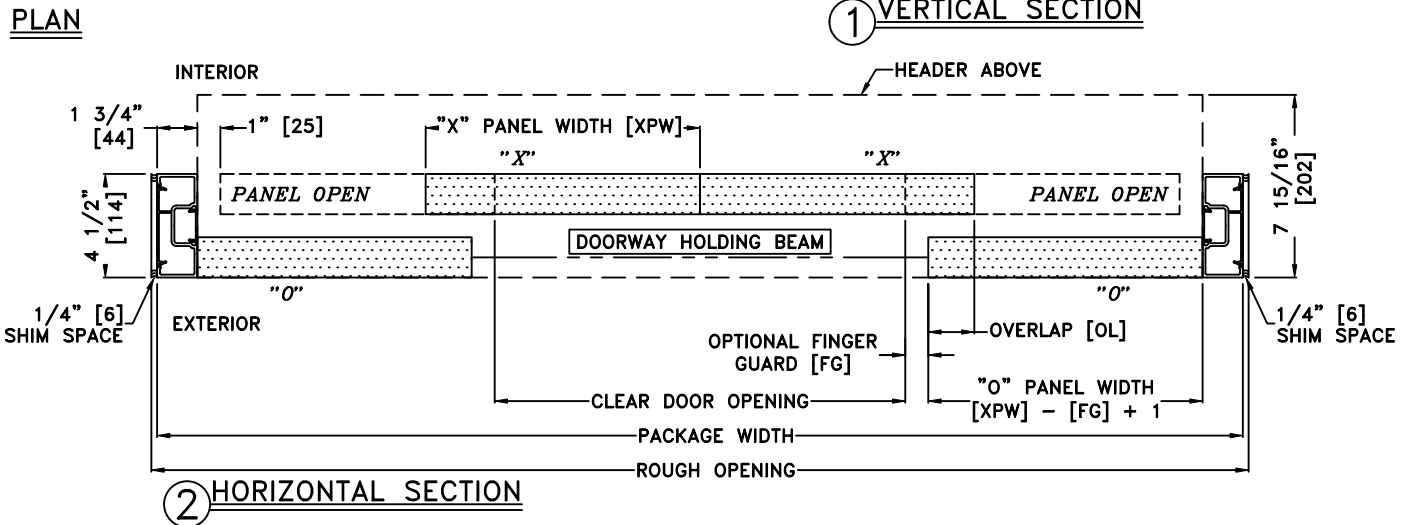
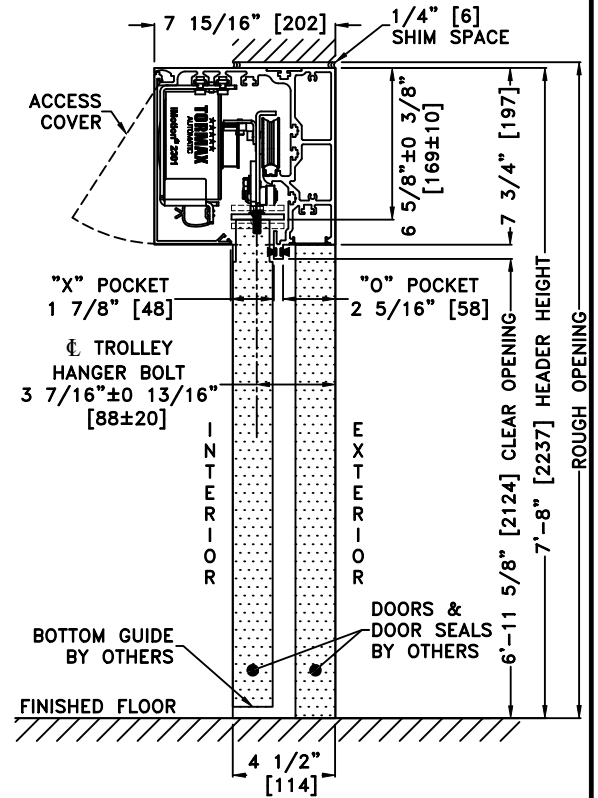
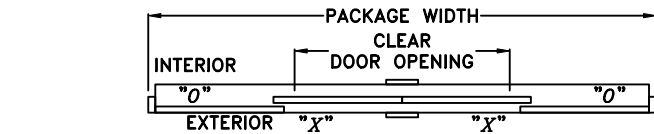
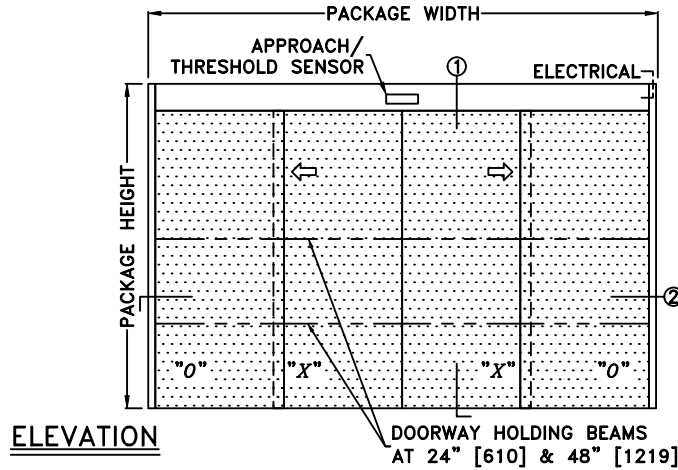


JOB NAME: \_\_\_\_\_ DATE: \_\_\_\_\_

DOOR LOCATION: \_\_\_\_\_ DOOR NO: \_\_\_\_\_ SHEET \_\_\_\_ OF \_\_\_\_



\*SEE APPENDIX FOR DETAILS OF TX9300 HEAVY DUTY DRIVE SYSTEM

NOTES:

1. DETAILS NOT TO SCALE
2. ELECTRICAL REQUIREMENTS: 120 VAC, 5 AMPS MIN. TO OPERATOR BY ELECTRICAL CONTRACTOR
3. DOOR PACKAGES ARE INDIVIDUALLY ENGINEERED TO FIT YOUR JOB REQUIREMENTS
4. DOOR GUIDE RECOMMENDED & TO BE SUPPLIED BY OTHERS

SAMPLE PACKAGE WIDTH INFORMATION (21.1)		
PACKAGE WIDTH [UW]	CLEAR DOOR OPENING [CDO]	PANEL WIDTH [PW]
$2*[CDO] + 2*[OL] + 4*[FG] - 3 \frac{1}{2}$	$[UW]_2 - [OL] - 2*[FG] - 1 \frac{3}{4}$ -OR- $2*([PW] - [OL] - [FG])$	$([UW] + 2*[OL]) / 4 - \frac{7}{8}$
10'-0" [3048]	54 1/4" [1378] (*)	30 1/8" [765] (*)
12'-0" [3658]	66 1/4" [1683] (*)	36 1/8" [918] (*)
14'-0" [4267]	78 1/4" [1988] (*)	42 1/8" [1070] (*)
DIMENSIONS NOMINAL		
(*) CALCULATIONS BASED ON 2"[51] OVERLAP [OL] & 1"[25] FINGER GUARD [FG]		