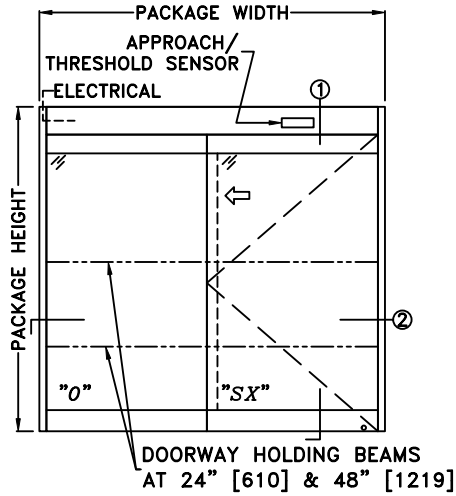
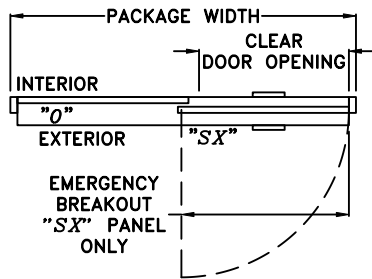


JOB NAME: \_\_\_\_\_ DATE: \_\_\_\_\_

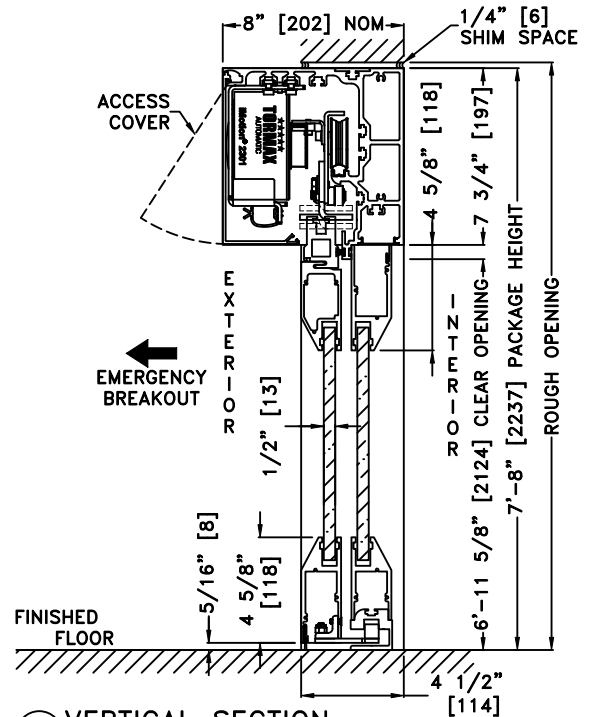
DOOR LOCATION: \_\_\_\_\_ DOOR NO: \_\_\_\_\_ SHEET \_\_\_\_ OF \_\_\_\_



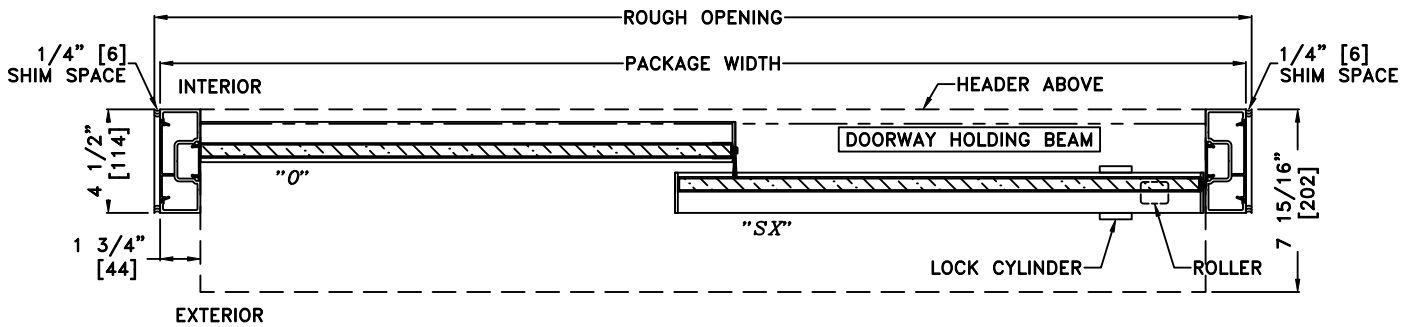
**ELEVATION**



**PLAN**



**1 VERTICAL SECTION**



**2 HORIZONTAL SECTION**

SEE APPENDIX 2.1.A FOR THRESHOLD OPTIONS  
 SEE APPENDIX 2.4.A FOR DETAILS OF TX9500AG  
 OUTSIDE SLIDE W/HEAVY DUTY DRIVE SYSTEM

**NOTES:**

1. ELEVATION & PLAN DETAILS NOT TO SCALE
2. ELECTRICAL REQUIREMENTS:  
 120 VAC, 5 AMPS MIN. TO OPERATOR BY  
 ELECTRICAL CONTRACTOR
3. DOOR PACKAGES ARE INDIVIDUALLY ENGINEERED TO  
 FIT YOUR JOB REQUIREMENTS

SAMPLE PACKAGE WIDTH INFORMATION			
PACKAGE WIDTH [UW]	CLEAR DOOR OPENING [CDO]	PANEL WIDTH [PW]	EMERGENCY BREAKOUT WIDTH
$2*[CDO] + 12$	$[UW]/2 - 6$ -OR- $[PW] - 5 \frac{1}{2}$	$[UW]/2 - \frac{1}{2}$	$[UW]/2 - 3$
7'-0" [2134]	36" [914]	41 1/2" [1054]	39" [991]
8'-0" [2438]	42" [1067]	47 1/2" [1207]	45" [1143]
9'-0" [2743]	48" [1219]	53 1/2" [1359]	51" [1295]

DIMENSIONS NOMINAL