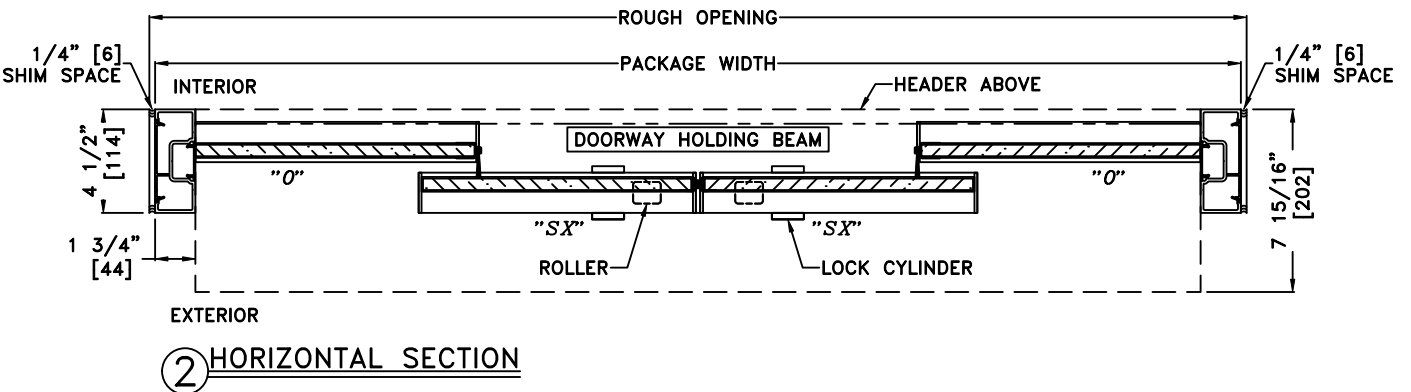
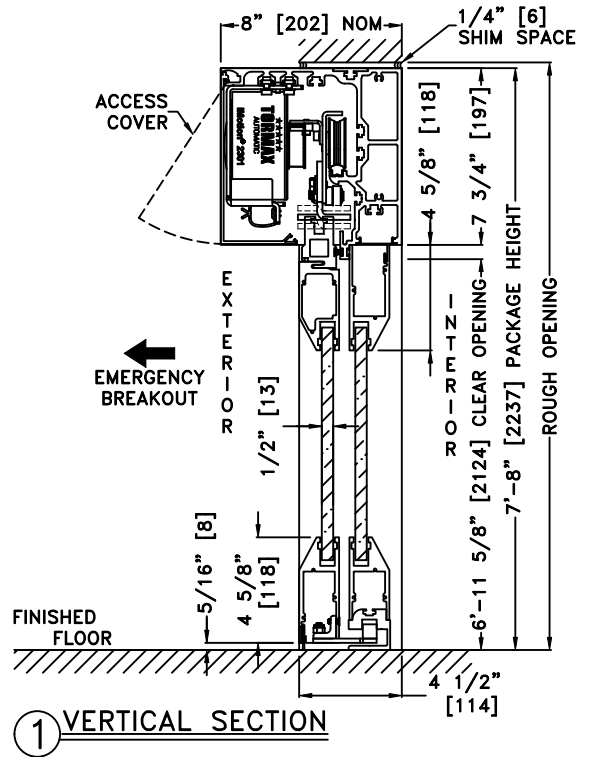
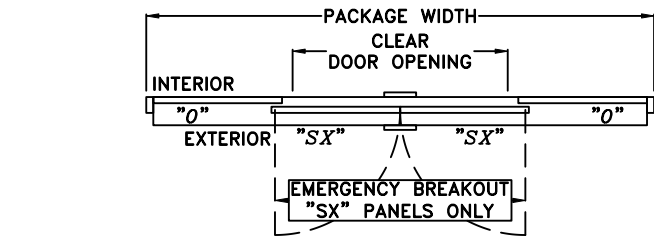
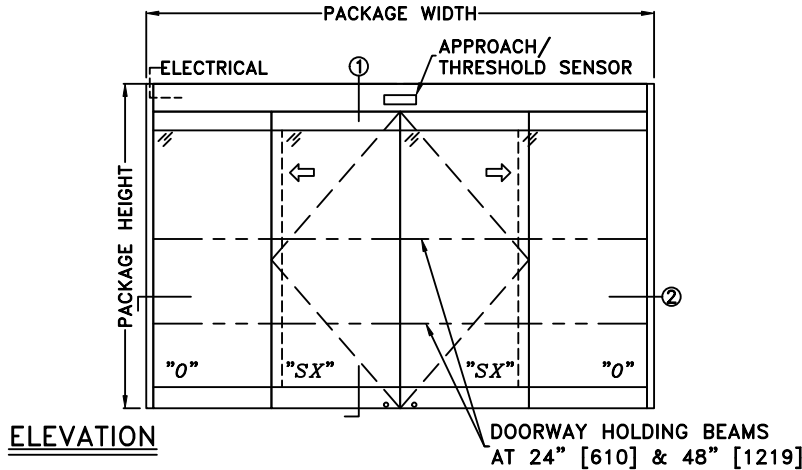


JOB NAME: \_\_\_\_\_ DATE: \_\_\_\_\_

DOOR LOCATION: \_\_\_\_\_ DOOR NO: \_\_\_\_\_ SHEET \_\_\_\_ OF \_\_\_\_



SEE APPENDIX 2.1.A FOR THRESHOLD OPTIONS  
 SEE APPENDIX 2.4.A FOR DETAILS OF TX9500AG  
 OUTSIDE SLIDE W/HEAVY DUTY DRIVE SYSTEM

NOTES:

- ELEVATION & PLAN DETAILS NOT TO SCALE
- ELECTRICAL REQUIREMENTS:  
 120 VAC, 5 AMPS MIN. TO OPERATOR BY ELECTRICAL CONTRACTOR
- DOOR PACKAGES ARE INDIVIDUALLY ENGINEERED TO FIT YOUR JOB REQUIREMENTS

SAMPLE PACKAGE WIDTH INFORMATION			
PACKAGE WIDTH [UW]	CLEAR DOOR OPENING [CDO]	PANEL WIDTH [PW]	EMERGENCY BREAKOUT WIDTH
$2*[CDO] + 20 \frac{5}{8}$	$\frac{[UW]}{2} - 10 \frac{5}{16}$ -OR- $2*[PW] - 11 \frac{1}{8}$	$\frac{[UW]}{4} + \frac{3}{8}$	$\frac{[UW]}{2} - 4 \frac{5}{16}$
10'-0" [3048]	49 11/16" [1262]	30 7/16" [772]	55 11/16" [1414]
12'-0" [3658]	61 11/16" [1567]	36 7/16" [925]	67 11/16" [1719]
14'-0" [4267]	73 11/16" [1872]	42 7/16" [1077]	79 11/16" [2024]