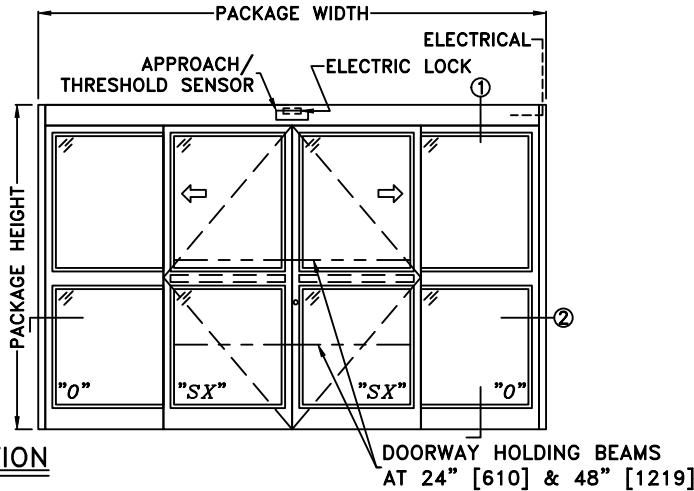
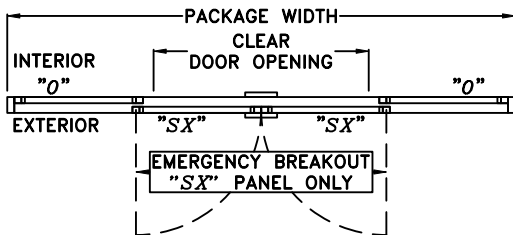


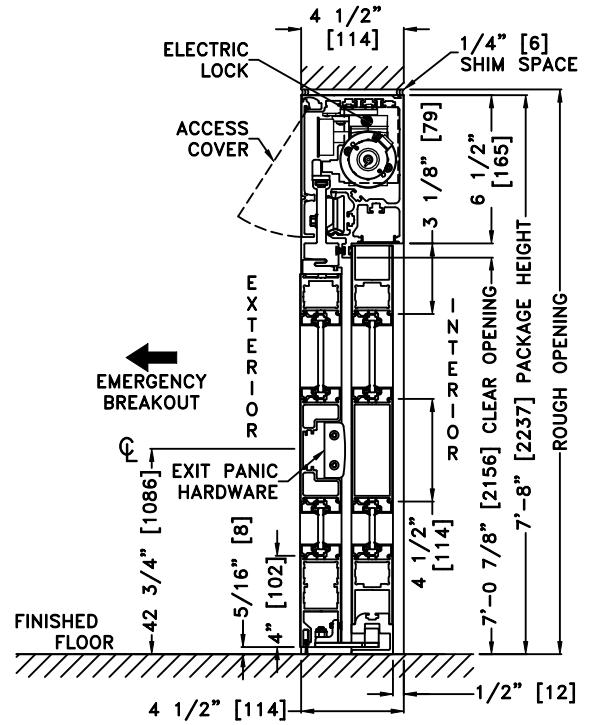
JOB NAME: _____ DATE: _____
 DOOR LOCATION: _____ DOOR NO: _____ SHEET ____ OF ____



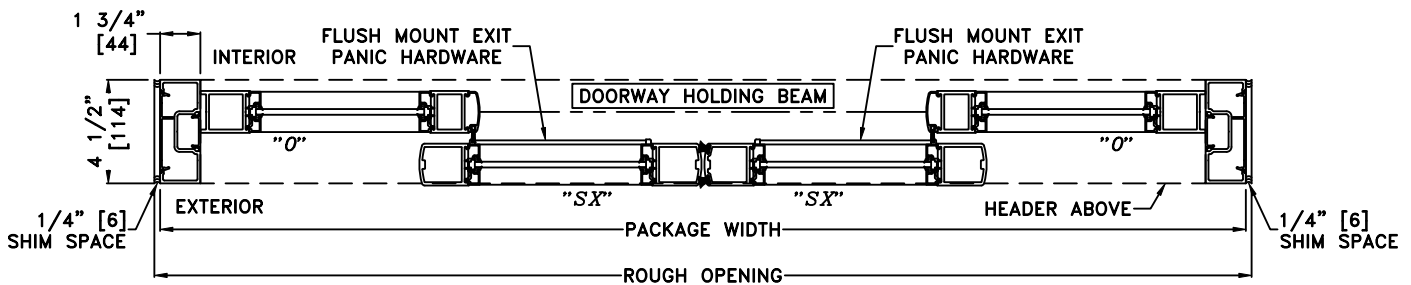
ELEVATION



PLAN



1 VERTICAL SECTION



2 HORIZONTAL SECTION

*SEE APPENDIX FOR THRESHOLD OPTIONS & SURFACE MOUNT CONCEALED VERTICAL ROD EXIT PANIC HARDWARE OPTION

NOTES:

1. DETAILS NOT TO SCALE
2. ELECTRICAL REQUIREMENTS: 120 VAC, 5 AMPS MIN. TO OPERATOR BY ELECTRICAL CONTRACTOR
3. DOOR PACKAGES ARE INDIVIDUALLY ENGINEERED TO FIT YOUR JOB REQUIREMENTS

SAMPLE PACKAGE WIDTH INFORMATION			
PACKAGE WIDTH [UW] (*)	CLEAR DOOR OPENING [CDO] (*)	PANEL WIDTH [PW] (*)	EMERGENCY BREAKOUT WIDTH (*)
$2*[CDO] + 23 \frac{1}{8}$	$\frac{[UW]}{2} - 11 \frac{9}{16}$ -OR- $2*[PW] - 12 \frac{3}{8}$	$\frac{[UW]}{4} + \frac{7}{16}$	$[UW] - 2*[PW] - 3 \frac{1}{2}$
10'-0" [3048]	48 7/16" [1230]	30 7/16" [773]	55 11/16" [1414]
12'-0" [3658]	60 7/16" [1535]	36 7/16" [926]	67 11/16" [1719]
14'-0" [4267]	72 7/16" [1840]	42 7/16" [1078]	79 11/16" [2024]
(*) CALCULATIONS BASED ON EQUAL PANELS, 2 1/8" NARROW STILES, & 1/4" GLASS			