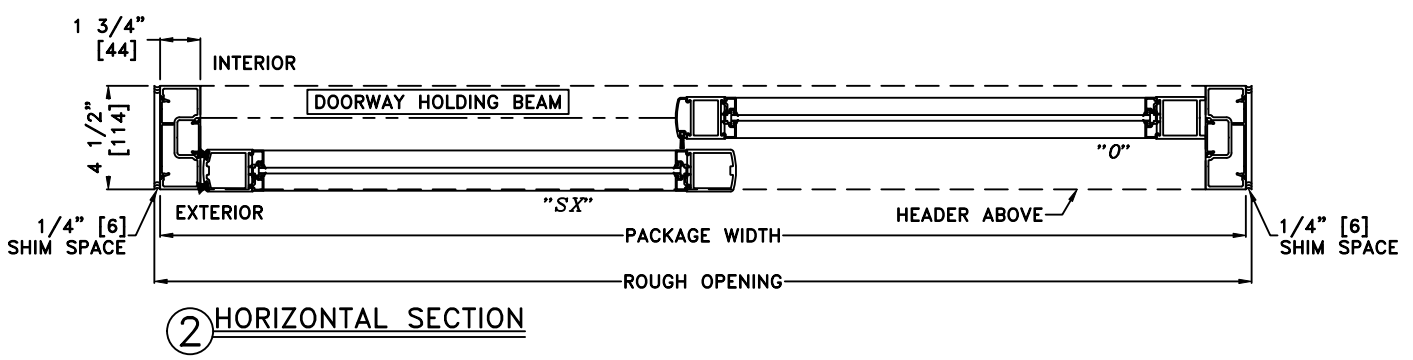
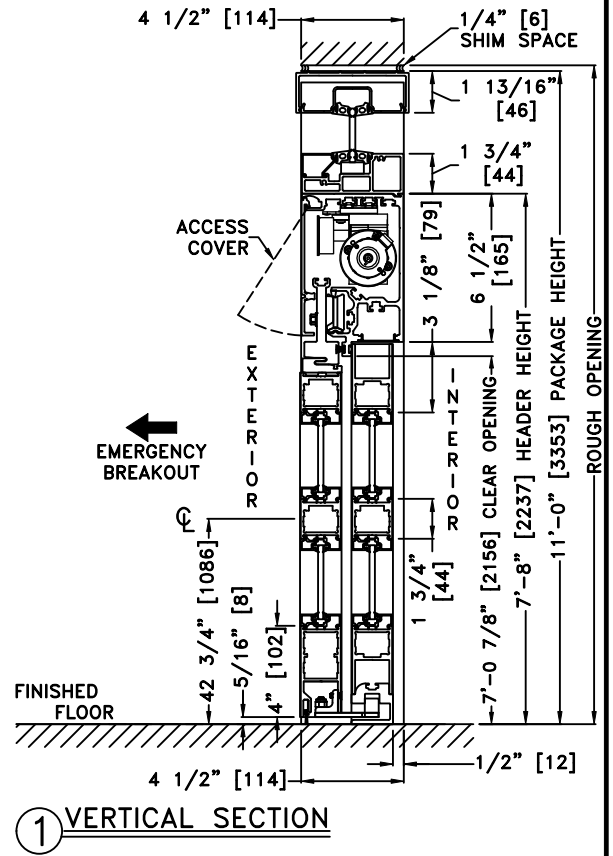
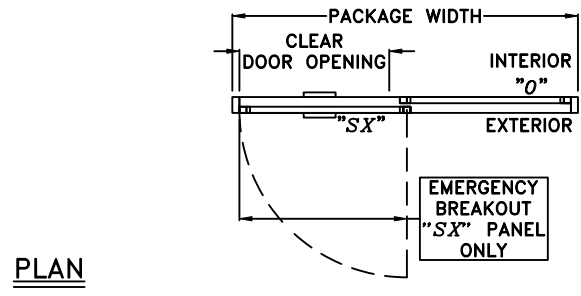
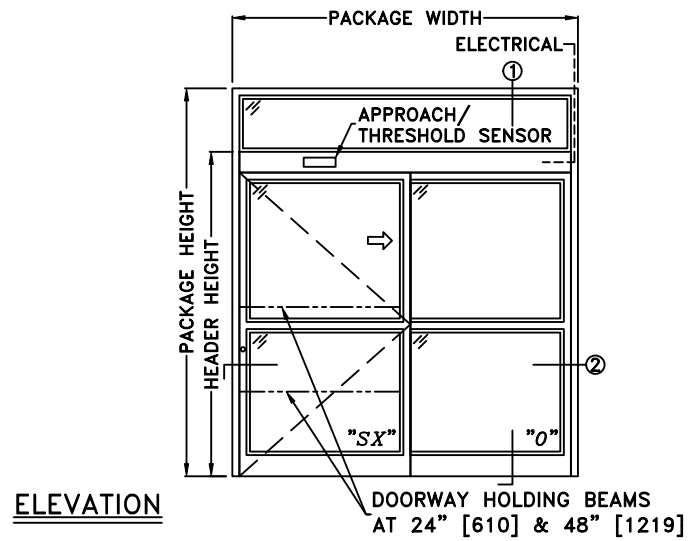


JOB NAME: _____ DATE: _____
 DOOR LOCATION: _____ DOOR NO: _____ SHEET _____ OF _____



*SEE APPENDIX FOR THRESHOLD OPTIONS

- NOTES:
1. DETAILS NOT TO SCALE
 2. ELECTRICAL REQUIREMENTS: 120 VAC, 5 AMPS MIN. TO OPERATOR BY ELECTRICAL CONTRACTOR
 3. DOOR PACKAGES ARE INDIVIDUALLY ENGINEERED TO FIT YOUR JOB REQUIREMENTS

| SAMPLE PACKAGE WIDTH INFORMATION | | | |
|--|-------------------------------------|----------------------|------------------------------|
| PACKAGE WIDTH [UW] (*) | CLEAR DOOR OPENING [CDO] (*) | PANEL WIDTH [PW] (*) | EMERGENCY BREAKOUT WIDTH (*) |
| 2*[CDO] + 13 1/4 | [UW]/2 - 6 5/8 -OR- [PW] - 6 1/8 | [UW]/2 - 1/2 | [UW] - [PW] - 3.5 |
| 7'-0" [2134] | 35 3/8" [899] | 41 1/2" [1054] | 39" [991] |
| 8'-0" [2438] | 41 3/8" [1051] | 47 1/2" [1207] | 45" [1143] |
| 9'-0" [2743] | 47 3/8" [1203] | 53 1/2" [1359] | 51" [1295] |
| (*) CALCULATIONS BASED ON EQUAL PANELS, 2 1/8" NARROW STILES, & 1/4" GLASS | | | |