

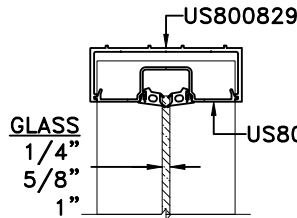
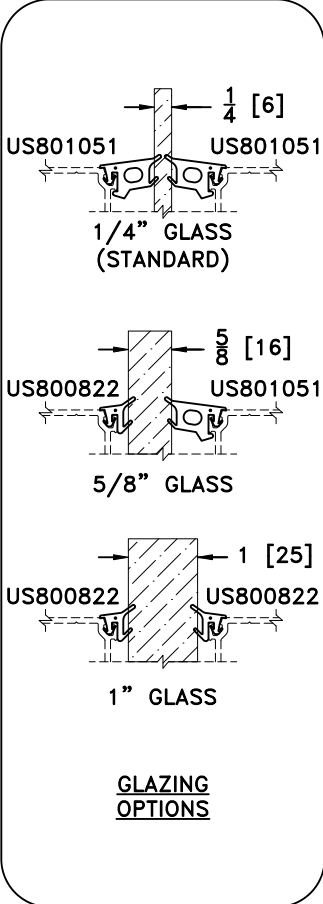
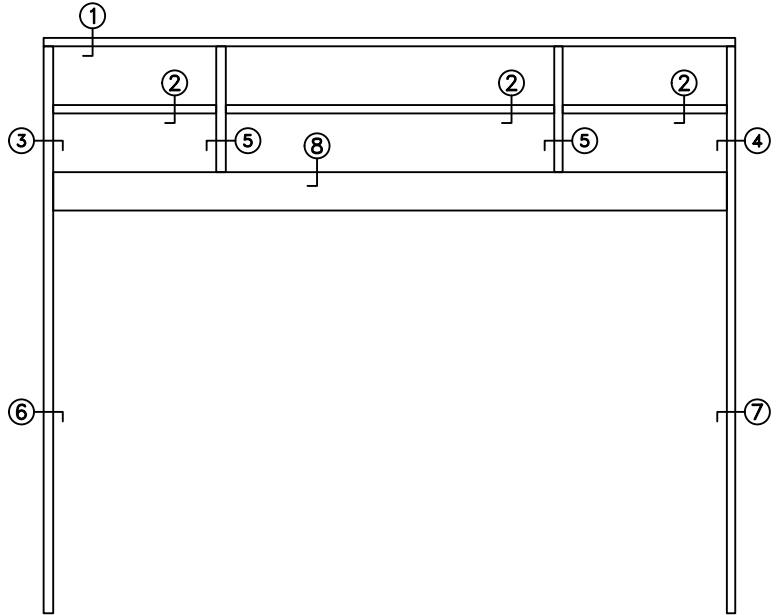
JOB NAME: _____ DATE: _____
 DOOR LOCATION: _____ DOOR NO: _____ SHEET ____ OF ____

APPLICATIONS

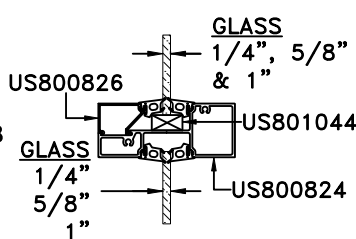
- TX9200
- TX9300
- TX9500
- CONCEALED MOUNT ONLY
- EXCLUDES HURRICANE & SLIM-LINE SYSTEMS

PART NUMBERS

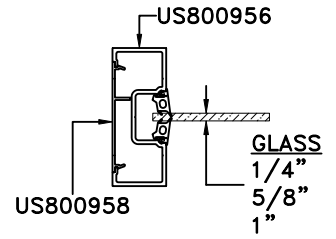
- US800822 PG GASKET – SMALL
- US800824 TRANSOM HORIZONTAL
- US800826 TRANSOM HRZ SNAP-IN FACE
- US800827 PG CHANNEL TRIM
- US800828 TRANSOM CAN SNAP-IN
- US800829 TRANSOM CAN
- US800956 PG JAMB TUBE
- US800957 PG POCKETED JAMB SNAP-IN
- US800958 PG BACK SNAP-IN
- US801041 PG HEADER GUTTER
- US801042 PG HEADER FACE
- US801043 PG 1/4" GLAZING BLOCK
- US801044 PG 1/2" GLAZING BLOCK
- US801051 PG GASKET – LARGE



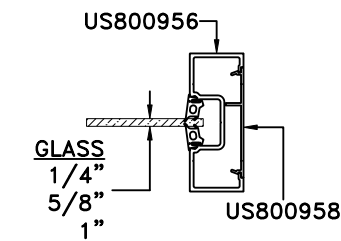
① TOP HRZ CAN



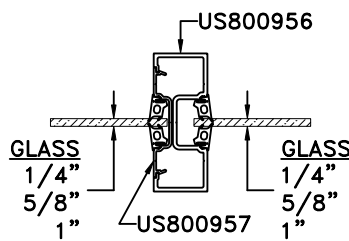
② INTERMEDIATE HRZ



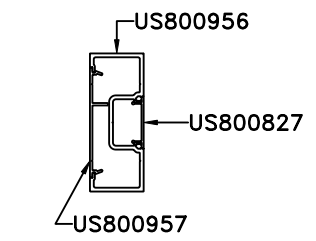
③ LH OUTER VERTICAL



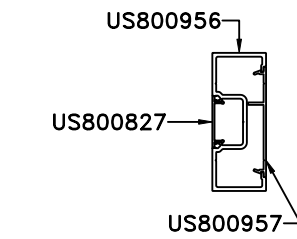
④ RH OUTER VERTICAL



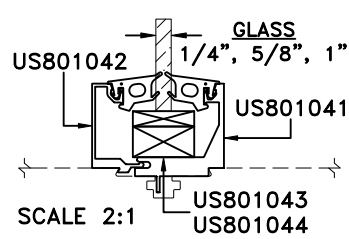
⑤ INTERMEDIATE VERTICAL



⑥ LH OUTER VERTICAL



⑦ RH OUTER VERTICAL



⑧ HEADER TOP

SCALE 2:1