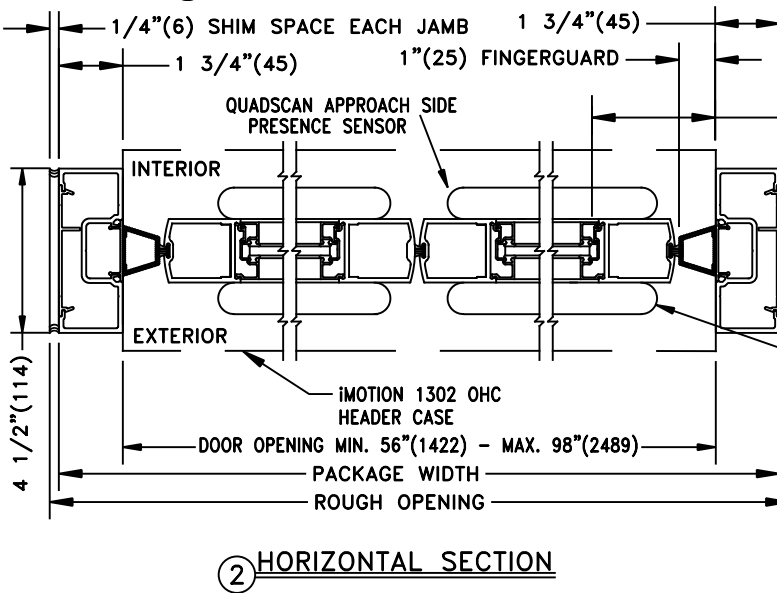
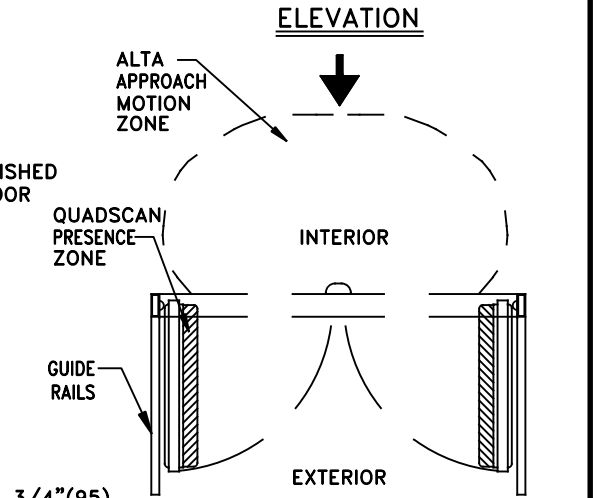
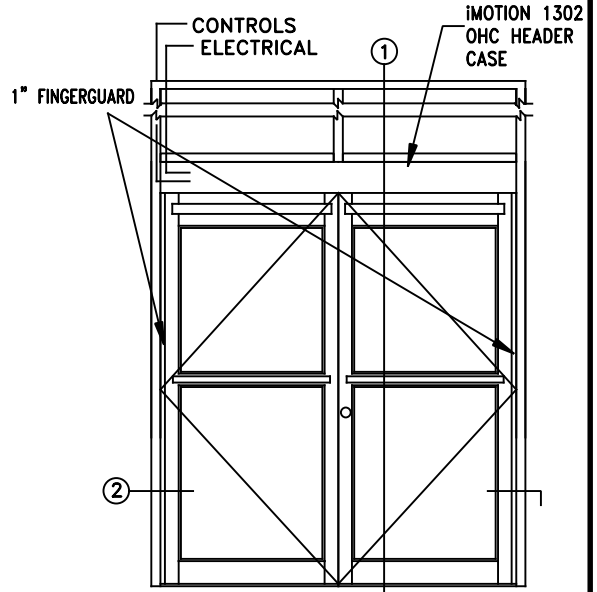
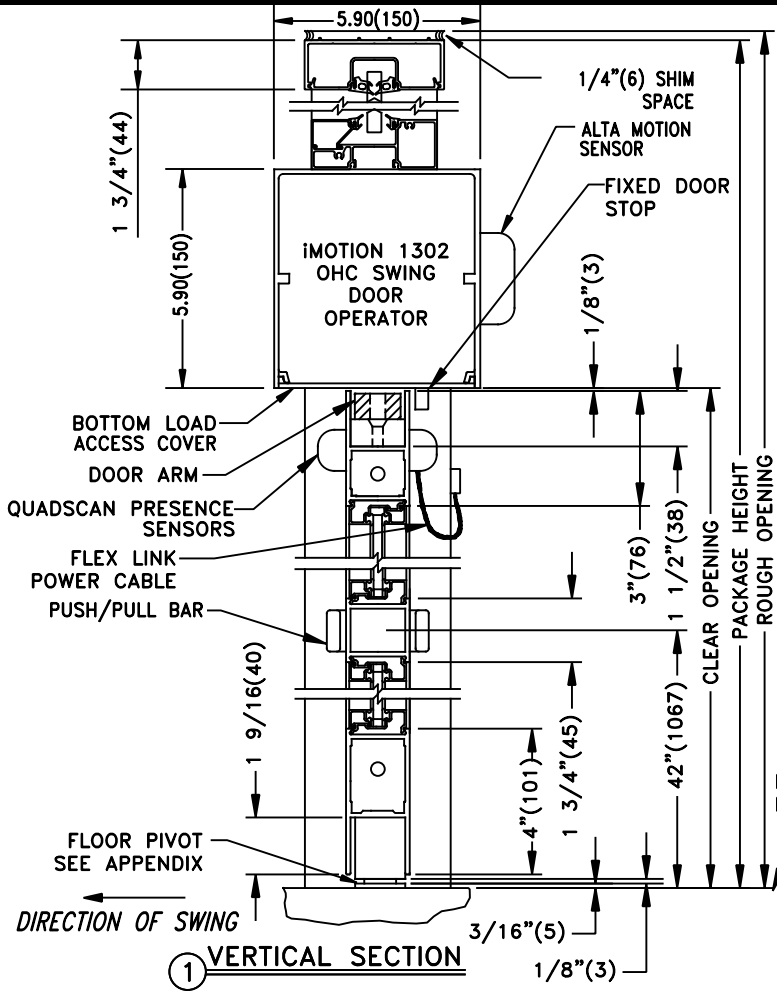


**iMOTION 1302 OHC SWING DOOR SYSTEM**  
**OUTSWING PAIR WITH TRANSOM FRAME**

JOB NAME: \_\_\_\_\_ DATE: \_\_\_\_\_  
 DOOR LOCATION: \_\_\_\_\_ DOOR NO: \_\_\_\_\_ SHEET \_\_\_\_\_ OF \_\_\_\_\_



- NOTES:**
1. DETAILS NOT TO SCALE.
  2. ELECTRICAL REQUIREMENTS: 120VAC, 5AMPS MIN. TO EACH OPERATOR BY ELECTRICAL CONTRACTOR.
  3. 32" CLEAR DOOR OPENING REQUIRED TO MEET A.D.A. REQUIREMENTS.
  4. DOORS MUST BE NON-LATCHED FOR PROPER OPERATION.
  5. DOORS FRAMES AND HARDWARE BY TORMAX TECHNOLOGIES.