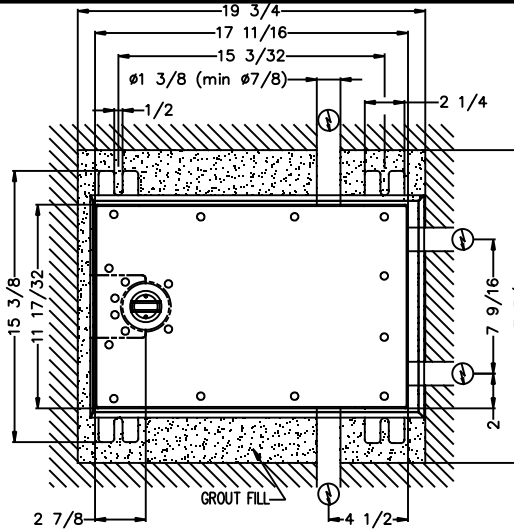
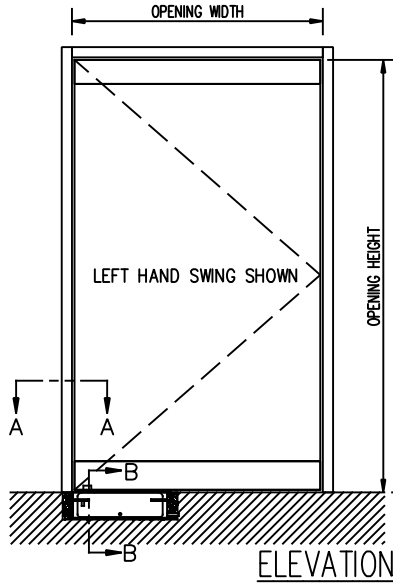


JOB NAME: _____ DATE: _____

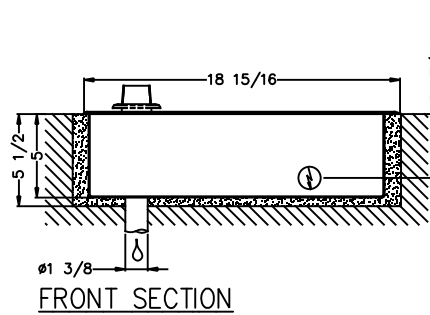
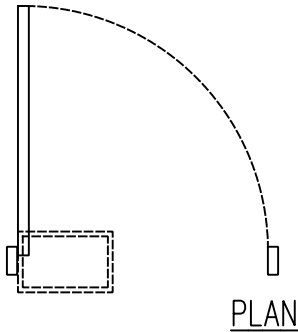
DOOR LOCATION: _____ DOOR NO: _____ SHEET _____ OF _____



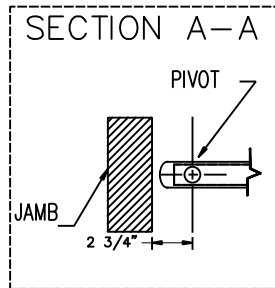
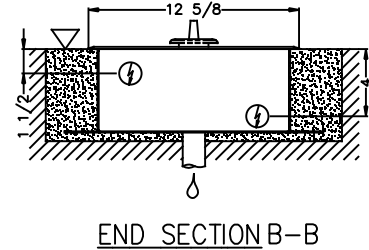
OPERATOR AND FLOOR BOX
 TOP VIEW

OPTION A
 - STANDARD LENGTH SHAFT
 - STAINLESS STEEL COVER

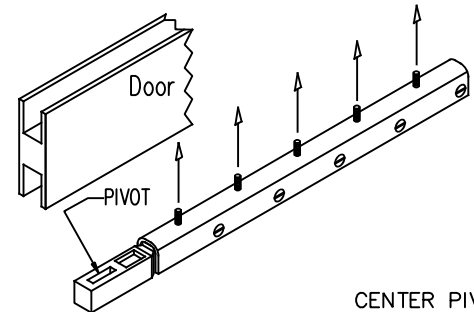
PIT DIMENSION
 19 3/4" L x 17 3/4" W x 5 1/2" D



FLOOR BOX - OPTION A



CENTER PIVOT



CENTER PIVOT
 DOOR SHOE

- ▽ Concrete or Finished Floor
- ⦿ Weep Drain Required
- ⚡ Possible Electrical Feed

NOTES:

1. DETAILS NOT TO SCALE.
2. ELECTRICAL REQUIREMENTS:
 120VAC, 15AMP MIN. TO EACH CONTROLLER LOCATED REMOTE FROM OPERATOR. LOW VOLTAGE CONDUIT RUN FROM EACH CONTROLLER TO OPERATOR BY ELECTRICAL CONTRACTOR.
3. DOORS, FRAMES AND HARDWARE BY OTHERS.
4. 32" CLEAR DOOR OPENING REQUIRED TO MEET A.D.A. REQUIREMENTS.
5. DOORS MUST BE NON-LATCHED FOR PROPER OPERATION.
6. OPERATOR CAN BE CONFIGURED TO MEET ANSI STANDARDS A156.10 & ANSI A156.19

REFER TO THRESHOLD DETAIL
 DRAWING FOR DISTANCE
 FROM BOTTOM OF DOOR
 SHOE TO FINISHED FLOOR