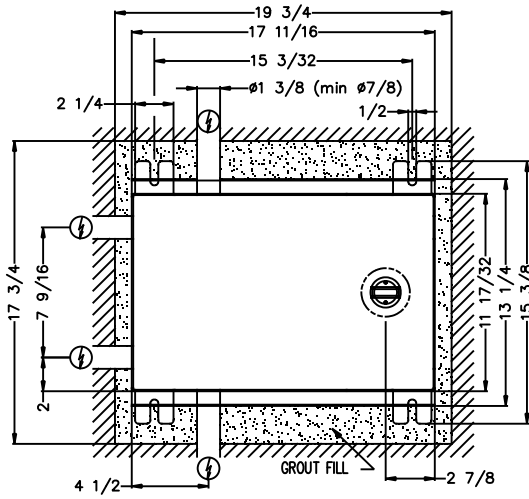
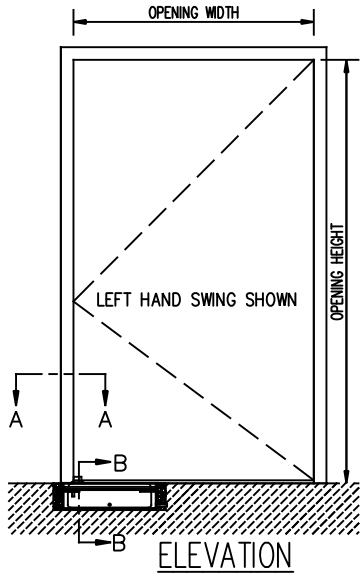




**MOTION™ TN 110 IN-FLOOR SWING DOOR OPERATOR  
FLUSH MOUNT BOX  
SINGLE DOOR LH BUTT/OFFSET PIVOT APPLICATION**

JOB NAME: \_\_\_\_\_ DATE: \_\_\_\_\_  
DOOR LOCATION: \_\_\_\_\_ DOOR NO: \_\_\_\_\_ SHEET \_\_\_\_ OF \_\_\_\_



**OPERATOR AND FLOOR BOX  
TOP VIEW**

**OPTION B**

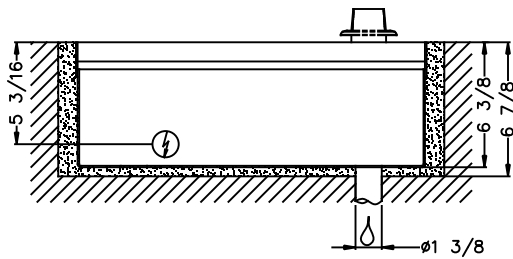
- EXTENDED SHAFT
- SPECIAL REMOVABLE COVER BOX FOR FLOOR COVERING INSTALLATION
- MAX. FLOOR COVERING = 1/2"

**PIT DIMENSION**

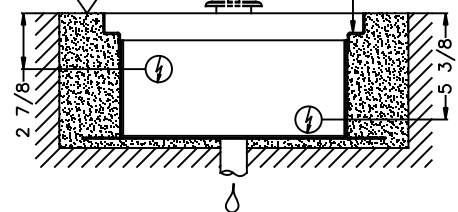
19 3/4"L x 17 3/4"W x 6 7/8"D

**FLOOR BOX - OPTION B**

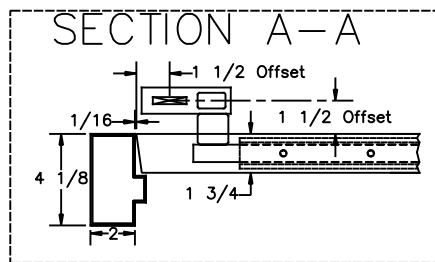
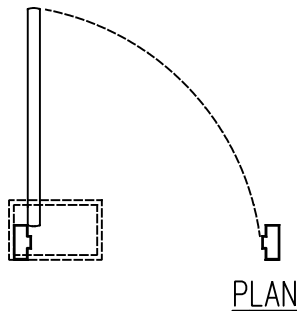
Max. Floor covering thickness in the installation frame 3/4"



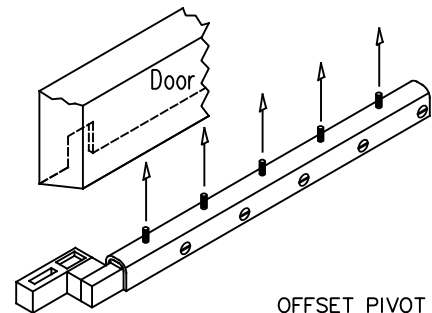
**FRONT SECTION**



**END SECTION B-B**



**OFFSET PIVOT**



- ▽ Concrete or Finished Floor
- ⏸ Weep Drain Required
- ⚡ Possible Electrical Feed

**NOTES:**

1. DETAILS NOT TO SCALE.
2. ELECTRICAL REQUIREMENTS:  
120VAC, 15AMP MIN. TO EACH CONTROLLER LOCATED REMOTE FROM OPERATOR. LOW VOLTAGE CONDUIT RUN FROM EACH CONTROLLER TO OPERATOR BY ELECTRICAL CONTRACTOR.
3. DOORS, FRAMES AND HARDWARE BY OTHERS.
4. 32" CLEAR DOOR OPENING REQUIRED TO MEET A.D.A. REQUIREMENTS.
5. DOORS MUST BE NON-LATCHED FOR PROPER OPERATION.
6. OPERATOR CAN BE CONFIGURED TO MEET ANSI STANDARDS A156.10 & ANSI A156.19

REFER TO THRESHOLD DETAIL DRAWING FOR DISTANCE FROM BOTTOM OF DOOR SHOE TO FINISHED FLOOR