

# State Of The Art Slide Door Unit Feature Benefit

- Series TX9500 All Glass Outside Slide - Models Include Concealed for New Construction or Remodel and Surface for Retrofit
- Custom Designed Top and Bottom Door Shoes - Glass Pocket is Offset to One Side of the Rail to Minimize Air Infiltration. Door Rails Will Accommodate 1/2" (12) Thick Tempered Glass. Sliding Panels are Pinned in the Corners and Bonded in Place to Eliminate Slippage. A Lower Caster Will Aid in the Support and Swing of the Sliding Panel in the Event of a Breakaway Condition
- Available with 1/2" (12) Tempered Glass - Clear or Tint With Polished Edges
- All Glass Sliding Panel Security - Secured at the Floor With Single Point MS Deadlock and Cylinders
- Sealed Against the Environment - Concealed Adjustable Nylon Sweeps to the Underside of the Sliding Glass Panel, Nylon Brush Weather-Stripping Between the Glass Panels, and Wool Pile Weather-Stripping Seals the Sliding Glass Panel at the Lead Edge and Between the Header and Door Carrier.
- Optional Accessories - Battery Back-Up, Electric Lock, I/O Module, Security Monitoring of Sliding Door Position, People Counting Devices and Other Door Auxiliary Hardware
- Door Support and Suspension - Two Independent Trolley Heads Consisting of (4) 2 1/2" (64) Diameter Nylon Rollers With Precision Steel Lifetime Lubricated Closed Ball Bearing Centers and (2) Anti-Riser Rollers to Prevent Derailing
- Door Support and Suspension for Large Heavy Doors - Two Heavy Duty Independent Trolley Heads Consisting of (8) 2 1/2" (64) Diameter Nylon Rollers With Precision Steel Lifetime Lubricated Closed Ball Bearing Centers and (4) Anti-Riser Rollers to Prevent Derailing
- Field Replaceable Hard Coat Anodized Aluminum Door Roller Track, Isolated Between a Rubber Isolation Pad - Provides for a Smooth and Quite Ride
- Overhead Transom Pocket Flush Glaze Gasket System - No Exposed Glass Stops, Accommodates 1/4" (6) and 1" (25) Thick Glass
- Complete Range of Heavy Duty Aluminum Threshold Profiles Available - Recessed, Surface Double Bevel and Combination Surface Bevel/Square
- Standard Architectural Class 1 Anodized Finishes Clear and Dark Bronze - Other Anodized Finishes, Painting and Metal Cladding Available Upon Request

## Tormax Sensor Systems

Tormax Sliding Door Systems are available with high quality, high performance sensor systems.



### TORMAX 7501

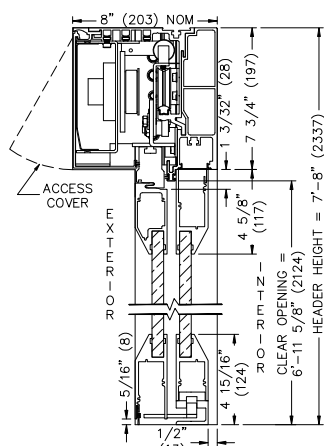
The TORMAX 7501 Sensor is a self-monitoring, all active infrared sensor for sliding doors. It combines infrared technology for activation and pedestrian safety. Intelligent unidirectional detection technology provides energy savings with less door hold open time. Self-adjusts in real time avoiding unnecessary door opening caused by changing environmental conditions.



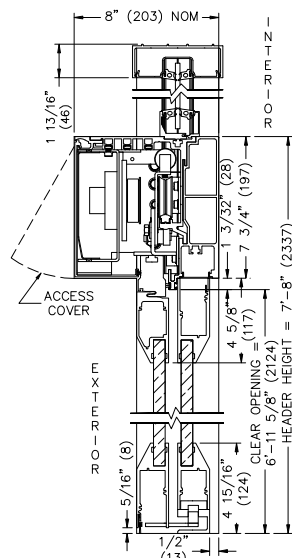
### IXIO-DT1

The IXIO-DT1 Sensor is a self-monitoring, dual technology sensor for sliding doors. It combines microwave radar technology for activation of the door with infrared technology for pedestrian safety. The unidirectional radar provides energy savings and an infrared curtain protects pedestrians as they pass through the door.

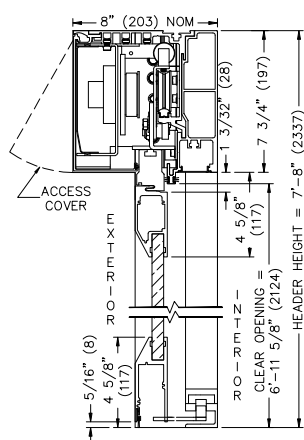
TX9500



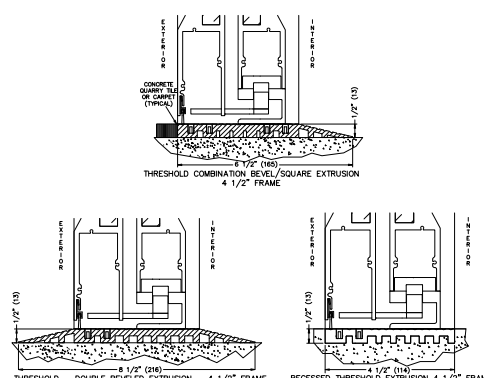
TX9500 W/Transom



TX9500SM



### Continuous Threshold Options



Visit the Tormax web site at [www.tormaxusa.com](http://www.tormaxusa.com) for detail drawings, specifications, product brochures, other sensor systems and manual controls.



TORMAX USA Inc.  
12859 Wetmore Road  
San Antonio, Texas 78247  
888-685-3707  
210-494-3551  
Fax 210-494-5930  
[www.tormaxusa.com](http://www.tormaxusa.com)  
Email [info@tormaxusa.com](mailto:info@tormaxusa.com)

TORMAX is a division and a registered trademark of Landert Motoren AG

REV 08/17



## Automatic Slide Door Systems Series TX9500 All Glass Outside Slide



### World Class Entrance Systems

#### Ideal For:

- Hospitality
- Office Buildings
- Health Care Facilities
- Transportation
- Condominiums
- Convenience Stores
- Retail & Food Stores
- Institutions
- Car Dealerships
- Libraries
- Government Buildings
- Education
- Independent Living Centers
- Clean Rooms
- Financial
- Churches
- Processing & Industrial Plants





# SLIDING DOORS

With iMotion® Direct Drive State of the Art Technology

## Modular, Flexible, Outstanding Profile Design

Tormax Slide Door Systems are modular in design and can be adapted to any facility or aesthetic requirements. Door aesthetics can be customized from door size to glass type and color as well as metal finish and color. The Series TX9500 All Glass Door Package is available as a single slide and bi-part slide with and without transom.

Tormax Slide Door Systems assure smooth, silent and dependable operation. Door panels ride on four closed bearing nylon wheels, which are durable and quiet. The wheels slide on an easily replaced hard-coated anodized convex track that rests on a rubber bed for ultra quiet operation. The door panels are driven by a nylon reinforced tooth belt drive, for reduced-sound and slip free action.

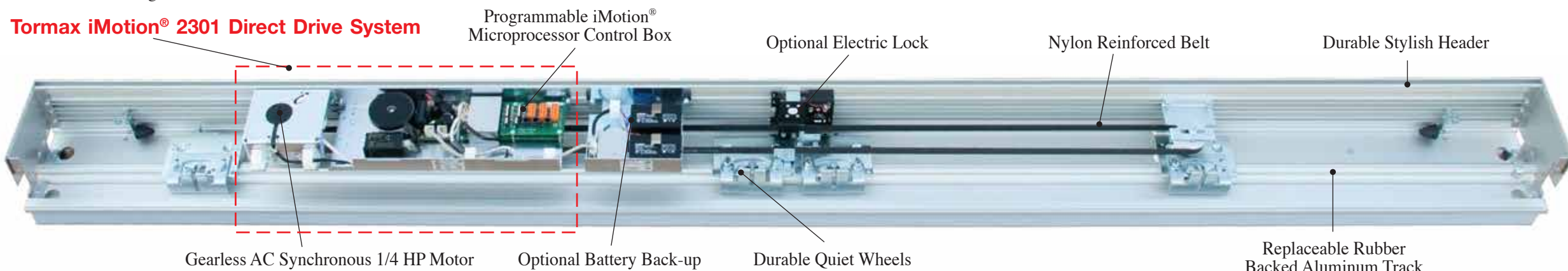
Tormax Slide Door Systems will accommodate the iMotion® 2301 direct drive system as well as the iMotion® 2401 heavy duty and non-corrosive direct drive systems and components. The Series TX9500 All Glass Door Package is configured as an outside slide and can be enhanced by a wide array of components accessory choices. Optional accessories include electric locking; battery back-up, I/O module and choice of threshold profiles.

### TX9500

The Series TX9500 is an all-glass sliding door entrance system. It creates an appealing design oriented environment that provides open and clear lines of sight. The door system utilizes the Tormax iMotion® direct drive system and 1/2" thick tempered glass panels. The system is available in clear or dark bronze anodized finish, painted finishes as well as stainless steel or brass clad finish.

The Series TX9500 is a fully adjustable door system, it is available with emergency breakout and many other optional features. For an entrance that requires a smooth, quiet and elegant inviting look, the Tormax TX9500 all glass slider is the ideal solution.

### Tormax iMotion® 2301 Direct Drive System



### Leading the Way in Automatic Door Technology

The Tormax Slide Door System is the ultimate intelligent system. It incorporates state of the art iMotion® direct drive system technology, with self-adjusting fully programmable iMotion® microprocessor control and on-board auto diagnostics.



### Tormax iMotion® Direct Drive

Created for long lasting efficiency and performance, the Tormax iMotion® Direct Drive has no gears to wear, no leaking oil or grease, no motor commutator, brushes and couplings to replace.

**The result is a long service life with lowest total cost of ownership.**

The iMotion® drive is extremely quiet in operation, and offers self-adjusting programmable iMotion® microprocessor controller with advanced auto diagnostics, and plug and play features, which make installation and operation fast and simple.

### Self-Adjusting iMotion® Controller

The iMotion® direct drive maintains optimal performance at all times through the use of an on-board self-adjusting closed loop iMotion® microprocessor control system. The system periodically checks the door's operating limits and makes automatic adjustments to compensate for temperature, wind, dust, dirt, stack pressure and other outside factors, which alter the system's performance.

The door operating characteristics are fully adjustable via the Seven-Segmented Functional Control Panel, and can be used to customize a variety of door functions including speeds, door opening width, and door hold open time. The control system is easily accessible and utilizes plug and play iMotion® microprocessor technology. It self-calibrates opening and closing positions, door speeds and time delays for best possible performance based upon door weight and operating environment.

The fully programmable iMotion® control provides four programmable inputs for activation, key switch and mode of operation, four programmable inputs for safety, two programmable outputs for door position status, alarm, etc. This smart technology provides easy personalized programming, exceptional safety and monitoring features at the door level without any special tools.



### Functional Control Panel

Changing the operating characteristics and mode of operation of the Tormax Slide Door System is a simple task with the illuminated Seven-Segmented Function Control Panel. Standard with all slide door systems, the door can be field adjusted to meet any operating condition requirement.

### Auto Diagnostics

The Tormax iMotion® Direct Drive System is continuously monitored by an on-board auto diagnostic system; when a fault is detected a blinking code is displayed on the remote Seven-Segmented Function Control Panel. As standard, the system is further enhanced by two intelligent microprocessor self-monitoring doorway holding beams; they are self-checking every 20 seconds and after each opening to assure best performance.

### First Class with Universal iMotion® Processor



Registration of door position back to the controller is determined via motor encoder. Signals from the motor encoder define door position without use of position magnets or mechanical switches.

## iMotion® Direct Drive Technology Feature Benefit

- Tormax iMotion® 2301 Direct Drive 1/4 HP AC Synchronous Motor – No Gears to Wear, No Leaking Oil or Grease. No Motor Brushes, Commutator or Couplings to Replace. “Wear Free Drive Principle”
- Optional Tormax iMotion® 2401 Heavy Duty Direct Drive .40 HP AC Synchronous Motor – No Need to Sacrifice Performance and Duty, Ideal for Heavy Industrial or Tempered All Glass Doors.
- Optional Tormax .IP65 Direct Drive System – Ideal for Highly Corrosive Environments: Stainless, Dust Proof and Protective From Jetting Fluids. Drive System Components are Manufactured From 316 Marine Stainless Steel – Available in Both Standard and Heavy Duty
- Smooth and Silent Operation (sound level less than 70 DB) - “Silent Drive” Unlimited Application Opportunities
- High Speed/High Torque 1/4 HP AC Motor - Capable of Sliding Single Door Leafs Weighting up to 330 Pounds (150KG), Biparting Door Leafs Weighting up to 286 Pounds (130KG) Each
- Robust High Speed/High Torque .40 HP AC Motor - Capable of Sliding Single Door Leafs Weighting up to 992 Pounds (450KG), Biparting Door Leafs Weighting up to 661 Pounds (300KG) Each
- Universal iMotion® Microprocessor Controller – One Common Controller for All iMotion® Drives
- Plug and Play iMotion® Microprocessor Control System - Self-Calibrates Opening and Closing Positions, Door Speeds and Time Delays for Optimal Performance Based on the Door Weight and the Operating Environment
- Self-Adjusting iMotion® Microprocessor Control System - Auto-Compensates During Operation to Maintain Established Operating Parameters
- Programmable iMotion® Microprocessor Control System - Provides Flexibility During System Configuration, No Special Tools Required
- Reverse on Obstruction With Safety Circuitry – Monitors Both Directions of Door Movement Illuminated Seven-Segmented Function Control
- Panel - Provides for Six Operating Modes, System Configuration and Auto-Diagnostics
- Global Power Supply - Selectable 115-230VAC 50-60 HZ, Single Phase
- ANSI Compliant - Meets or Exceeds ANSI A156.10 Standards
- ANSI/ULC 325 Listed – United States and Canada