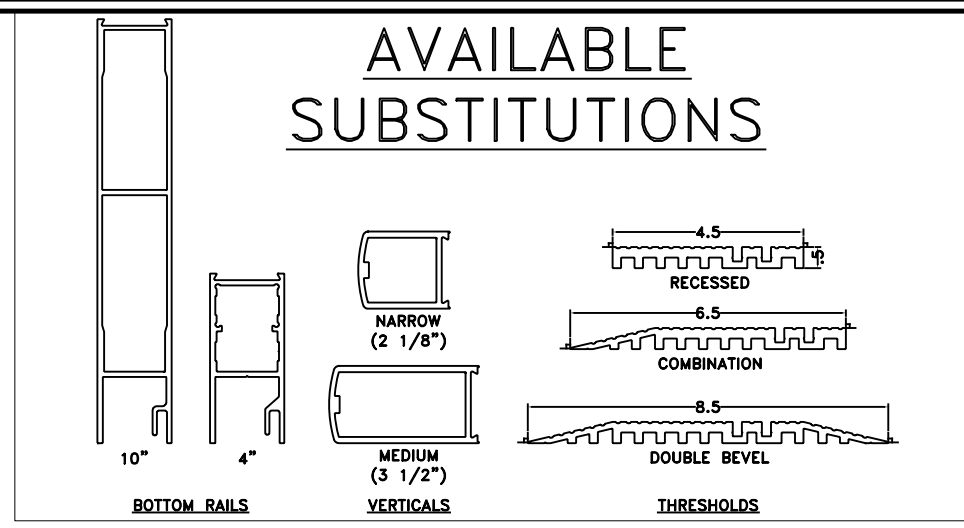
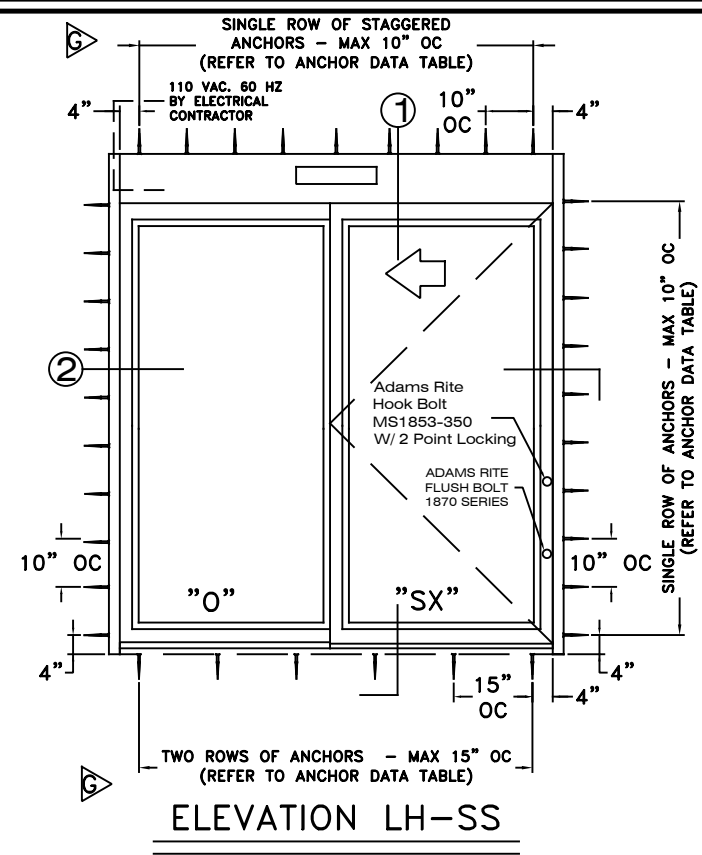


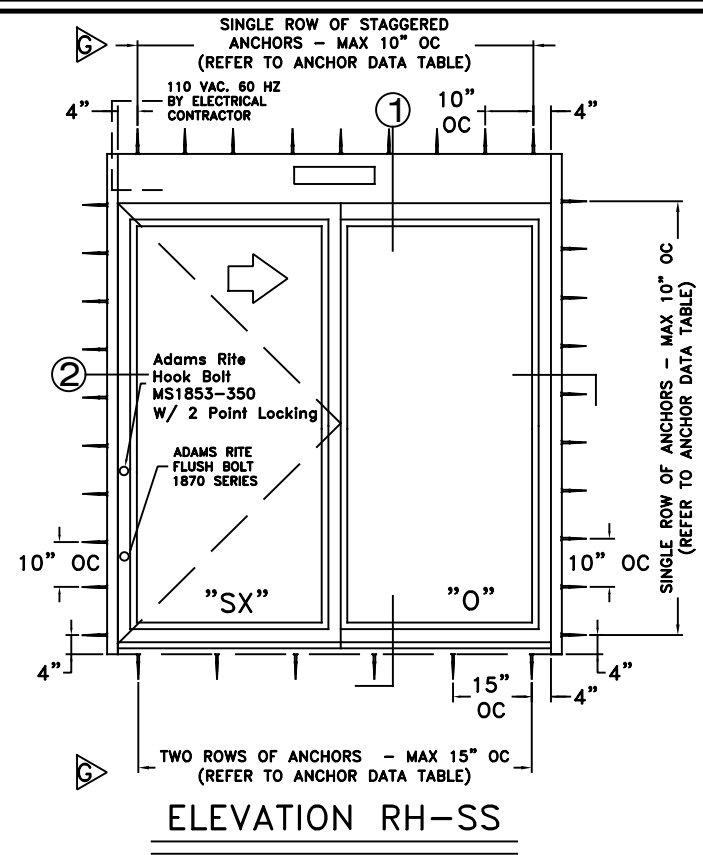
AVAILABLE SUBSTITUTIONS



REV	DESCRIPTION	BY	DATE
B	UPDATED PACKAGE WITH DATA	JESC	06/24/2004
C	ADDED SINGLE SLIDES	JESC	06/30/2005
D	RELEASED	JESC	10/17/2005
E	UPDATED ADDRESS, ADDED NEW T'HOLD, CHANGED DRAWING NUMBER FROM US800199	DSW	08/08/2011
F	NDA REF # CHANGED	DSW	02/20/2013
G	NEW NDA#, REVISED ANCHOR & GLASS SPECS.	DSW	05/02/2016
H	REPLACED NDA# WITH FL#	DSW	02/01/2019



ELEVATION LH-SS

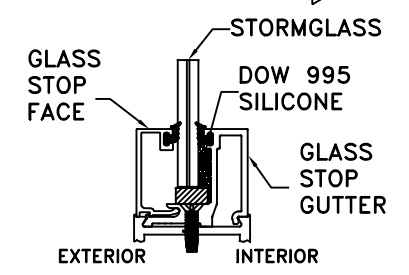


ELEVATION RH-SS

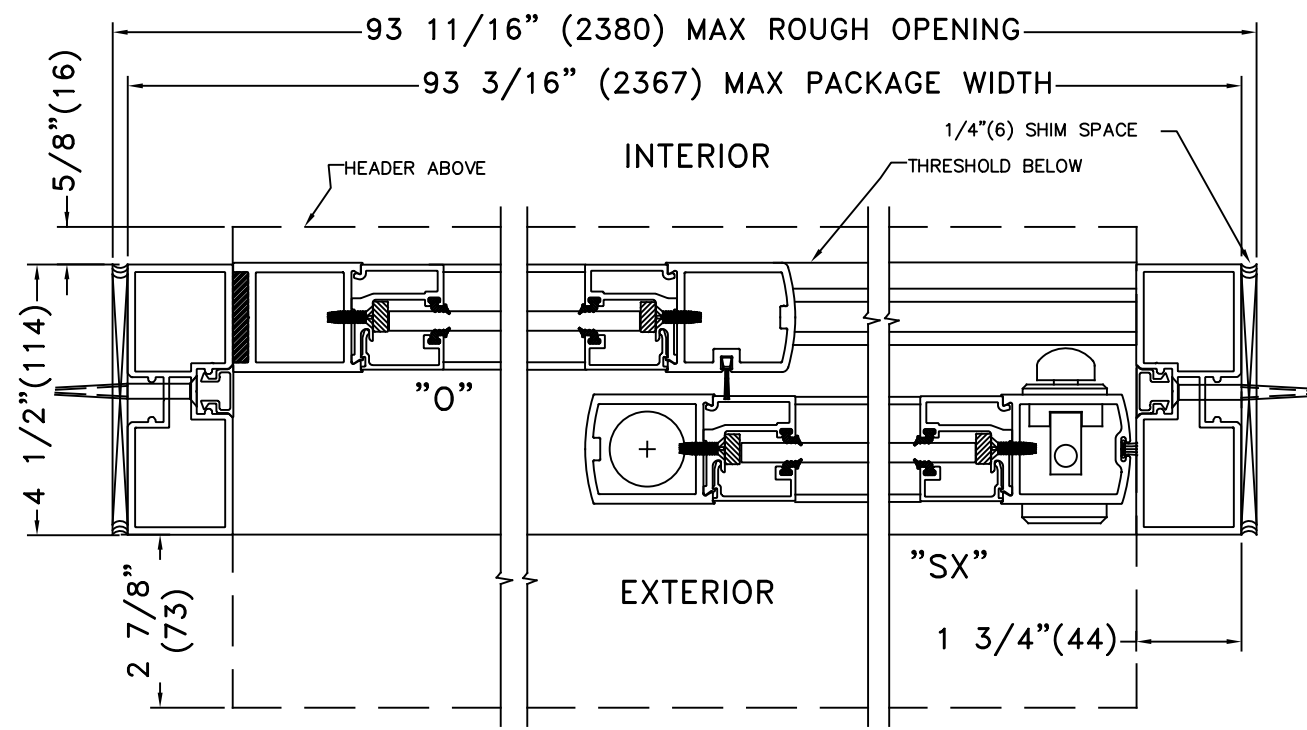
ANCHOR DATA				
SUBSTRATE	MINIMUM REQUIREMENTS	ALLOWABLE LOCATIONS	PENETRATION	EDGE DISTANCE
CONCRETE	3000 PSI	HEADER JAMBS SILL	1 1/2" MIN	2 1/2" MIN
WOOD	SG >= 0.55	HEADER JAMBS SILL	1 1/2" MIN	3/4" MIN
ALUMINUM	6063-T5 - 1/8" THICK	HEADER JAMBS	N/A	3/4" MIN
STEEL	A36 - 1/8" THICK Fu = 58 kst	HEADER JAMBS	N/A	3/4" MIN

NOTES:
 1-SEE ELEVATION DETAILS FOR ANCHOR SPACING
 2-MINIMUM PENETRATION IS BEYOND WALL DRESSING
 3-TYPICAL 2 ROWS OF FASTENERS FOR THRESHOLD INSTALLATION
 4-BASE MATERIAL DESIGNED BY OTHERS TO WITHSTAND IMPOSED LOAD

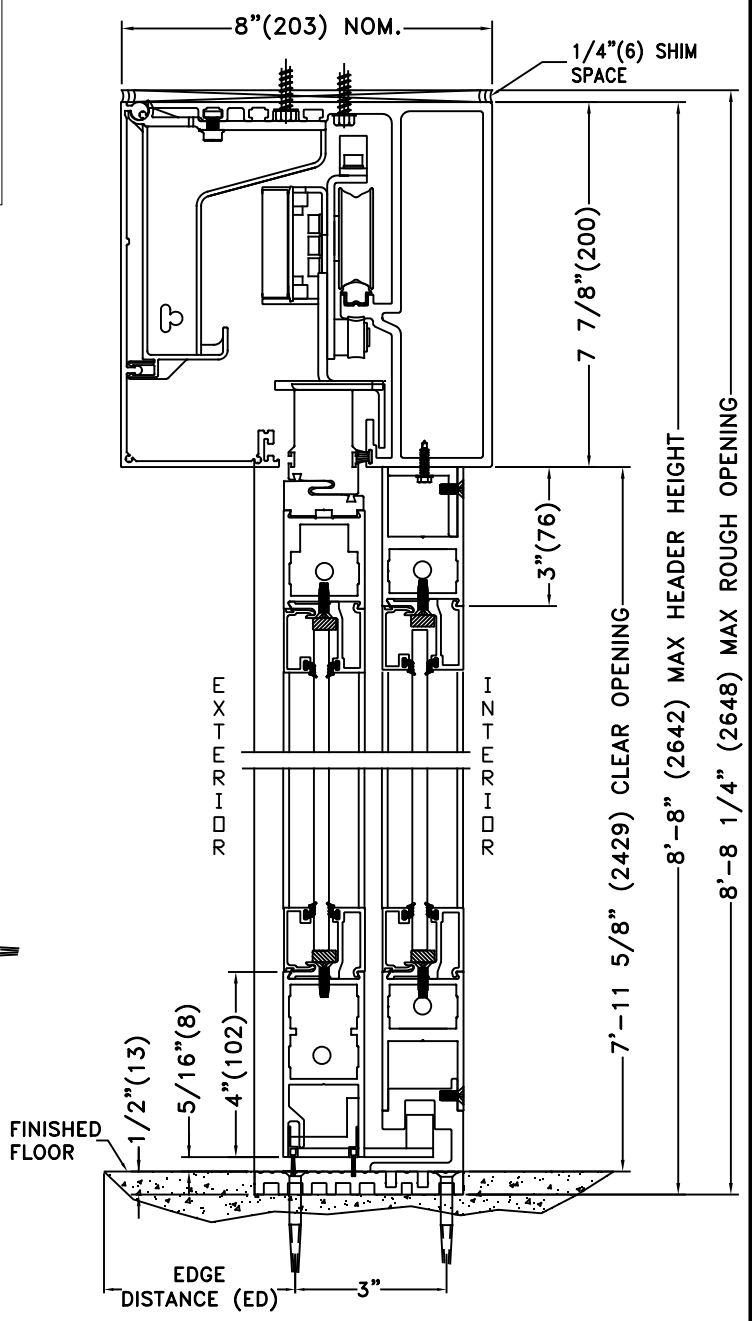
GLAZING DETAILS



GLASS SPECIFICATION
 0.325" OLDCASTLE IMPACT RATED GLASS
 -1/8" HEAT STRENGTHENED GLASS
 -0.075" SAFLEX CP COMPOSITE GLASS
 INTERLAYER W/PET CORE BY EASTMAN CHEMICAL CO. OR 0.075" STORMGLASS
 SAFLEX CP INTERLAYER W/PET CORE BY OLDCASTLE BUILDING ENVELOPE INC.
 -1/8" HEAT STRENGTHENED GLASS



HORIZONTAL SECTION



VERTICAL SECTION

DOOR ALLOWABLE DESIGNED PRESSURES

+57*, -57 PSF

LARGE MISSILE IMPACT

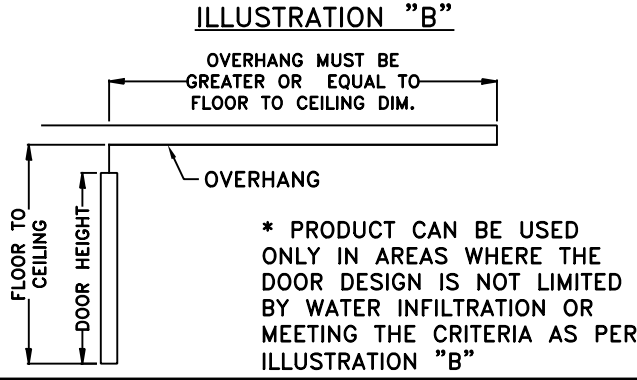


ILLUSTRATION "B"

OVERHANG MUST BE GREATER OR EQUAL TO FLOOR TO CEILING DIM.

OVERHANG

* PRODUCT CAN BE USED ONLY IN AREAS WHERE THE DOOR DESIGN IS NOT LIMITED BY WATER INFILTRATION OR MEETING THE CRITERIA AS PER ILLUSTRATION "B"

PACKAGE HEIGHT INFORMATION		
MAX PACKAGE HEIGHT	MASONRY OPENING	NOM. CLEAR DOOR OPENING
8'-8" (104")	8'-8 1/4" (104 1/4")	95 5/8"

PACKAGE WIDTH INFORMATION				
MAX PACKAGE WIDTH	MASONRY OPENING	NOM. CLEAR DOOR OPENING	SLIDING DOOR PANEL NOM. WIDTH	EMERGENCY BREAKOUT NOM. WIDTH
7'-9 3/16" (93 3/16")	7'-9 11/16" (93 11/16")	38 5/8"	46 1/2"	43 1/8"

TORMAX USA Inc.
 12859 WETMORE RD, SAN ANTONIO, TX. 78247

DO NOT SCALE PRINT. TOLERANCES UNLESS OTHERWISE SPECIFIED:
 .XX ± .010
 .XXX ± .005
 ± .5"

TORMAX AUTOMATIC

MATERIAL: N/A
 FINISH: N/A

DATE: 06/24/2004

9200 IMPACT, SINGLES
 REF. FL# 17648.1

SIZE: A
 DRAWN BY: Jesus C.
 Dwg. No. - Revision: US801169-H

SCALE: None | SHEET: Page 1 of 1