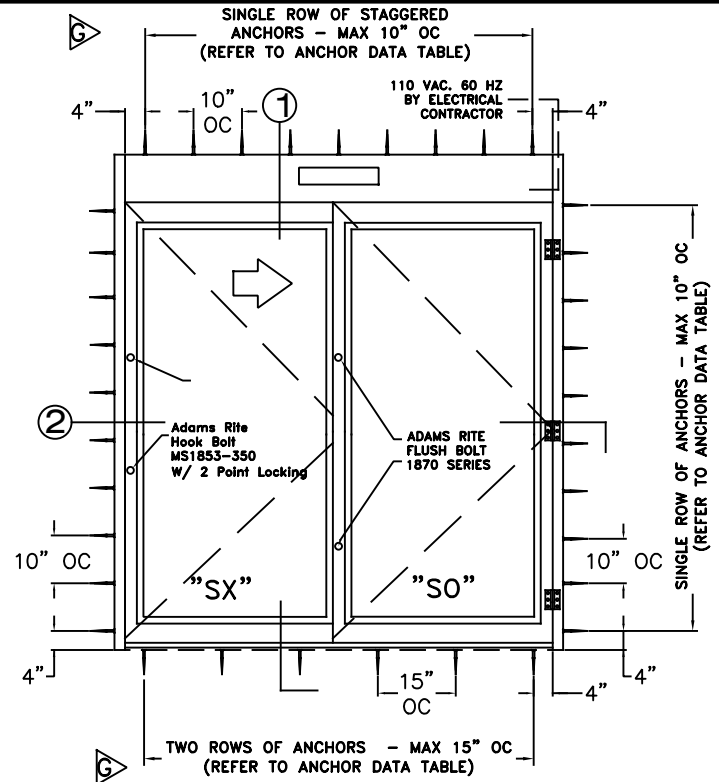
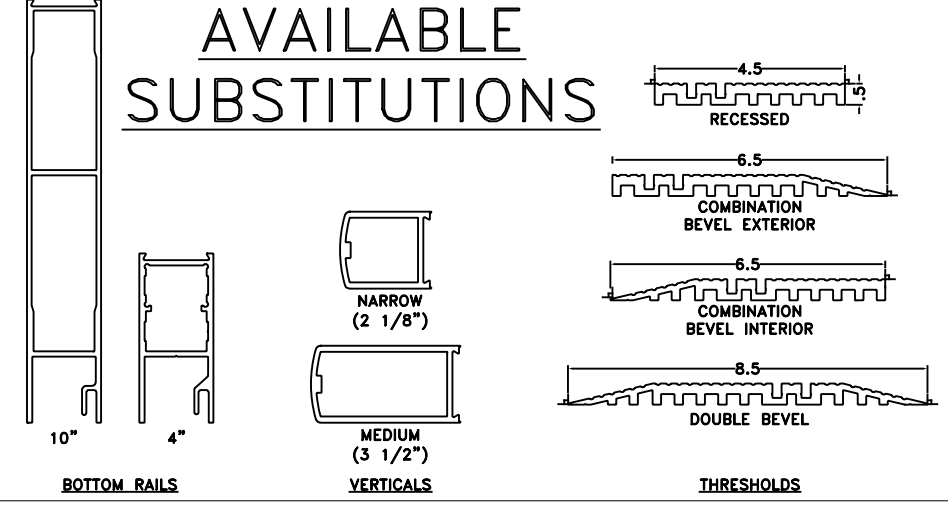


ELEVATION LH-SS



ELEVATION RH-SS

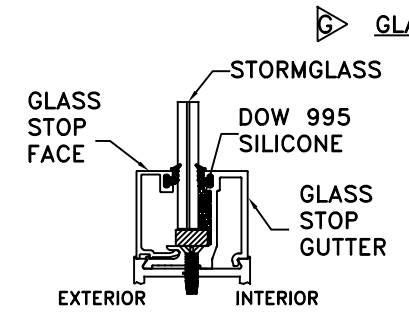
# AVAILABLE SUBSTITUTIONS



REV	DESCRIPTION	BY	DATE
B	UPDATED PACKAGE WITH DATA	JESC	06/24/2004
C	ADDED STEEL TUBE TO STILES	JESC	04/22/2005
D	RELEASED	JESC	10/17/2005
E	UPDATED ADDRESS, ADDED NEW T'HOLD, CHANGED DRAWING NUMBER FROM US800201	DSW	08/08/2011
F	NDA REF # CHANGED	DSW	02/20/2013
G	NEW NDA#, REVISED ANCHOR & GLASS SPECS.	DSW	05/02/2016
H	REPLACED NDA# WITH FL#	DSW	02/01/2019

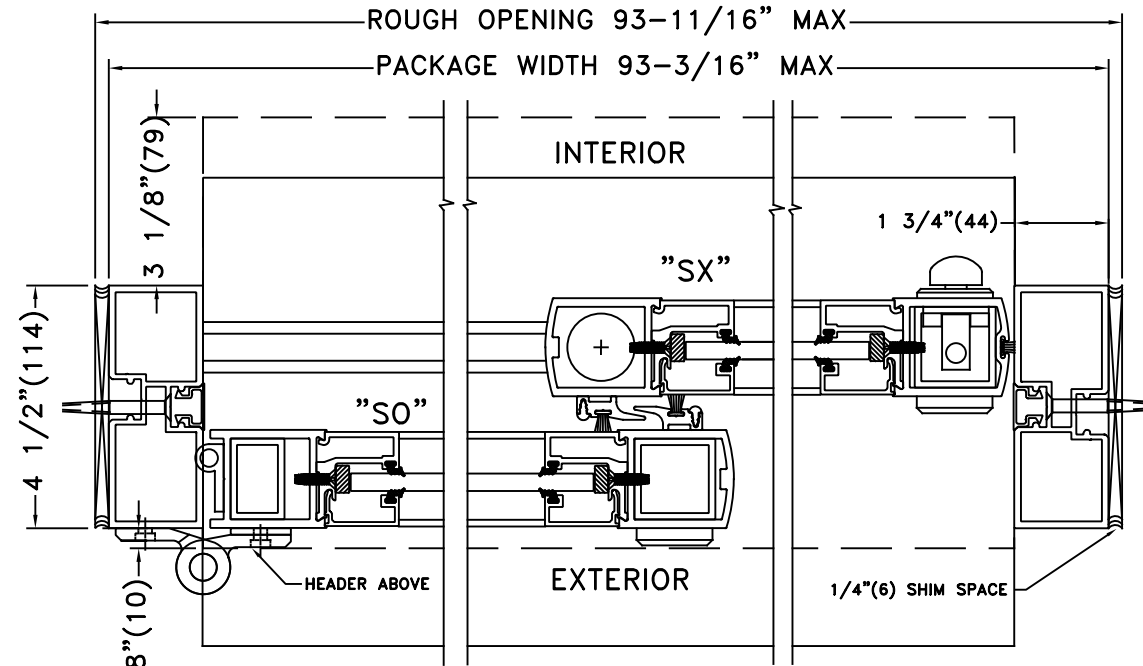
ANCHOR DATA				
SUBSTRATE	MINIMUM REQUIREMENTS	ALLOWABLE LOCATIONS	PENETRATION	EDGE DISTANCE
CONCRETE	3000 PSI	HEADER JAMBS SILL	1 1/2" MIN	2 1/2" MIN
WOOD	SG >= 0.55	HEADER JAMBS SILL	1 1/2" MIN	3/4" MIN
ALUMINUM	6063-T5 - 1/8" THICK	HEADER JAMBS	N/A	3/4" MIN
STEEL	A36 - 1/8" THICK Fu = 58 kst	HEADER JAMBS	N/A	3/4" MIN

NOTES  
 1-SEE ELEVATION DETAILS FOR ANCHOR SPACING  
 2-MINIMUM PENETRATION IS BEYOND WALL DRESSING  
 3-TYPICAL 2 ROWS OF FASTENERS FOR THRESHOLD INSTALLATION  
 4-BASE MATERIAL DESIGNED BY OTHERS TO WITHSTAND IMPOSED LOAD

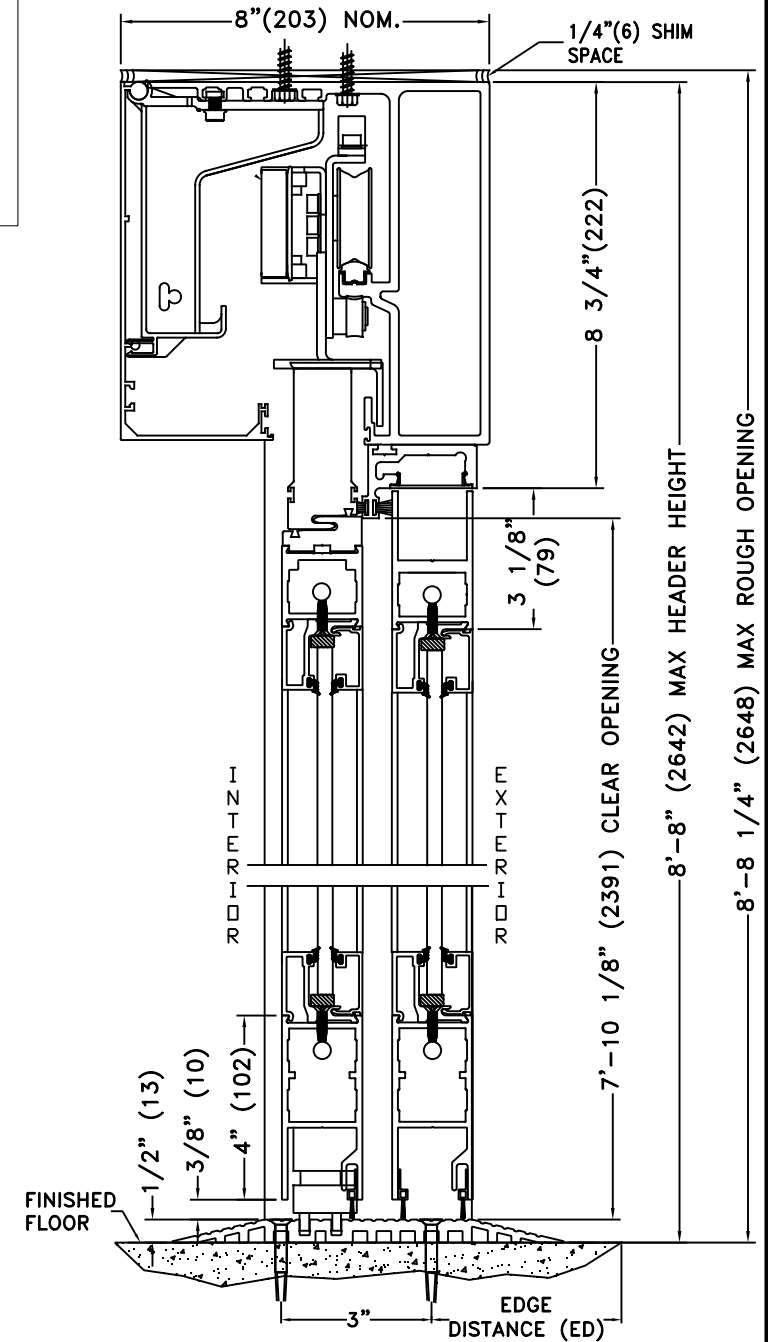


**GLAZING DETAILS**

**GLASS SPECIFICATION**  
 0.325" OLDCASTLE IMPACT RATED GLASS  
 -1/8" HEAT STRENGTHENED GLASS  
 -0.075" SAFLEX CP COMPOSITE GLASS  
 INTERLAYER W/PET CORE BY EASTMAN CHEMICAL CO. OR 0.075" STORMGLASS  
 SAFLEX CP INTERLAYER W/PET CORE BY OLDCASTLE BUILDING ENVELOPE INC.  
 -1/8" HEAT STRENGTHENED GLASS



HORIZONTAL SECTION

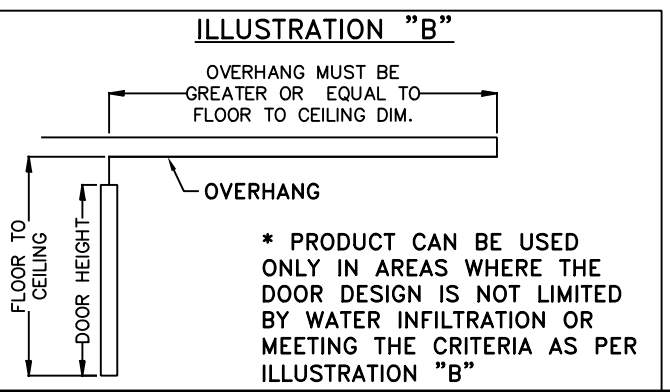


VERTICAL SECTION

**DOOR ALLOWABLE DESIGNED PRESSURES**

**+55\*, -55 PSF**

**LARGE MISSILE IMPACT**



PACKAGE HEIGHT INFORMATION		
MAX PACKAGE HEIGHT	MASONRY OPENING	NOM. CLEAR DOOR OPENING
8'-8" (104")	8'-8 1/4" (104 1/4")	94 1/8"

PACKAGE WIDTH INFORMATION				
MAX PACKAGE WIDTH	MASONRY OPENING	NOM. CLEAR DOOR OPENING	SLIDING DOOR PANEL NOM. WIDTH	EMERGENCY BREAKOUT NOM. WIDTH
7'-9 3/16" (93 3/16")	7'-9 11/16" (93 11/16")	38 5/8"	46 1/2"	85"

**TORMAX USA Inc.**  
 12859 WETMORE RD, SAN ANTONIO, TX. 78247

DO NOT SCALE PRINT  
 TOLERANCES UNLESS OTHERWISE SPECIFIED  
 .XX ± .010  
 .XXX ± .005  
 ± .5"

**TORMAX AUTOMATIC**

MATERIAL: N/A  
 FINISH: N/A

TITLE: 9300 IMPACT, SINGLES  
 REF. FL# 17648.3

SIZE: A  
 DRAWN BY: Jesus C.  
 Dwg. No. - Revision: US801173-H

SCALE: None  
 DATE: 06/24/2004  
 SHEET: Page 1 of 1