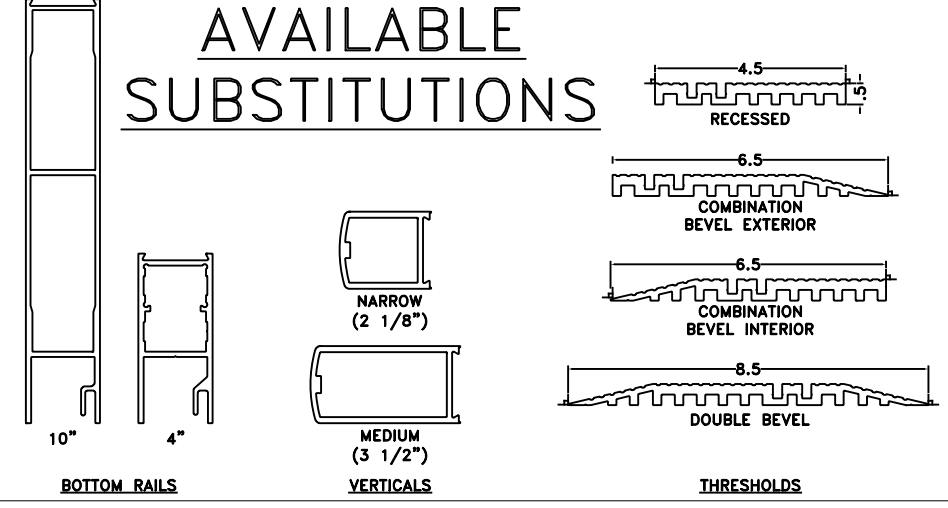


AVAILABLE SUBSTITUTIONS



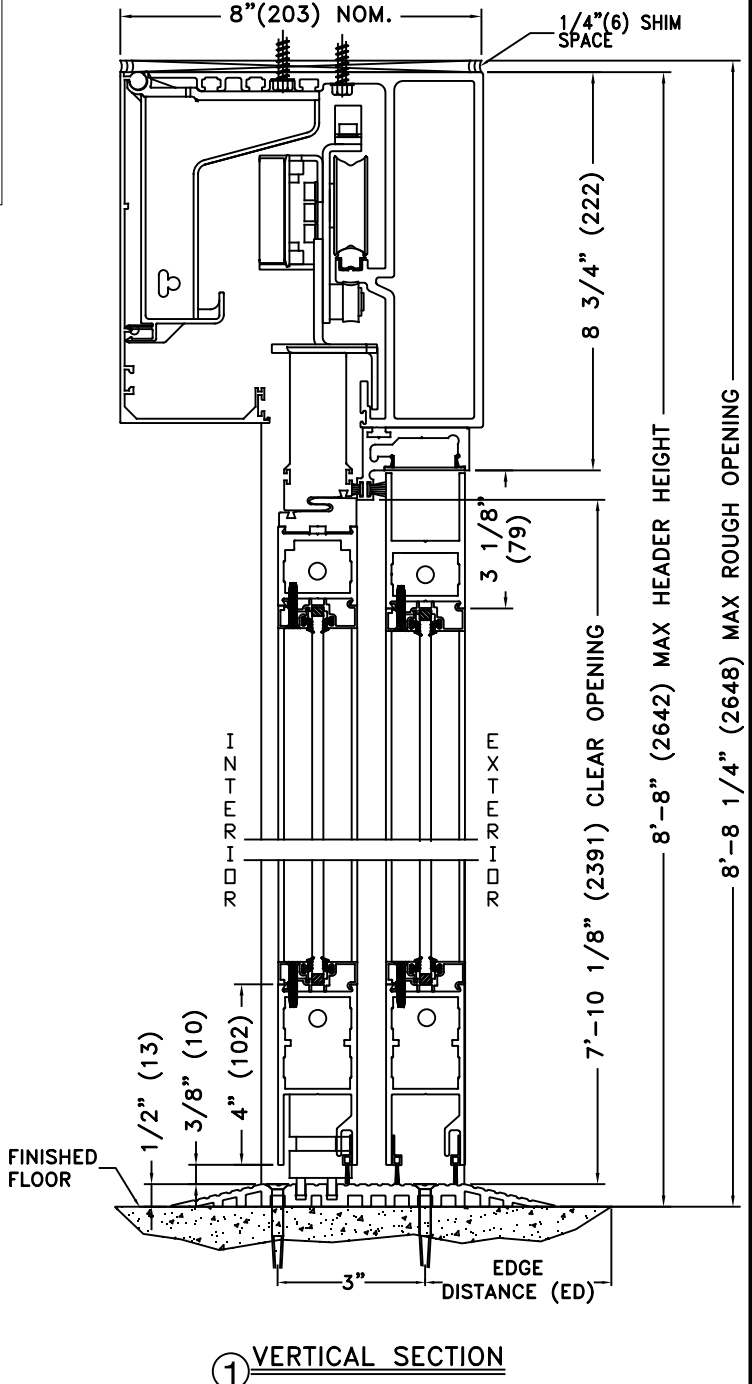
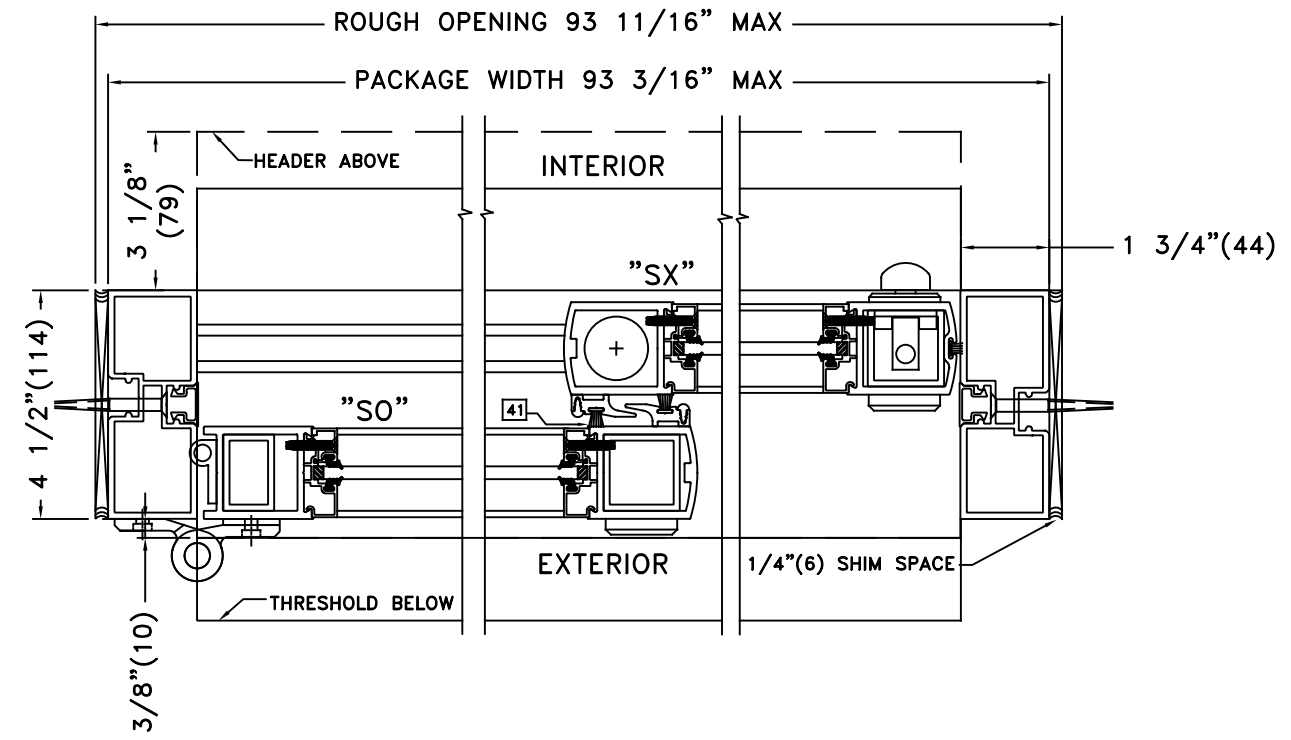
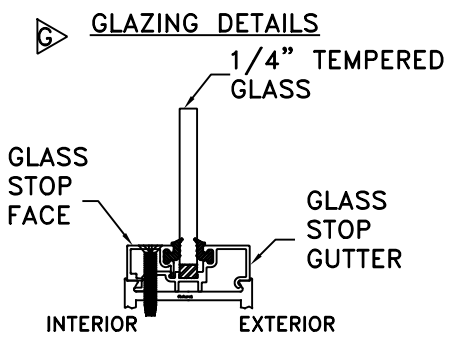
REV	DESCRIPTION	BY	DATE
B	UPDATED PACKAGE WITH DATA	JESC	06/24/2004
C	ADDED STEEL TUBE TO STILES	JESC	04/22/2005
D	RELEASED	JESC	10/17/2005
E	UPDATED ADDRESS, ADDED NEW T'HOLD, CHANGED DRAWING NUMBER FROM US800202	DSW	08/08/2011
F	NDA REF # CHANGED	DSW	02/20/2013
G	NEW NDA#, REVISED ANCHOR & GLASS SPECS.	DSW	05/02/2016
H	REPLACED NDA# WITH FL#	DSW	02/01/2019

ANCHOR DATA

SUBSTRATE	MINIMUM REQUIREMENTS	ALLOWABLE LOCATIONS	PENETRATION	EDGE DISTANCE
CONCRETE	3000 PSI	HEADER JAMBS SILL	1 1/2" MIN	2 1/2" MIN
WOOD	SG >= 0.55	HEADER JAMBS SILL	1 1/2" MIN	3/4" MIN
ALUMINUM	6063-T5 - 1/8" THICK	HEADER JAMBS	N/A	3/4" MIN
STEEL	A36 - 1/8" THICK Fu = 58 kst	HEADER JAMBS	N/A	3/4" MIN

NOTES

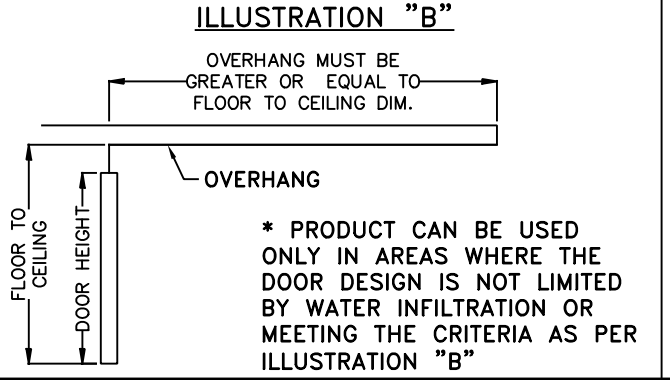
- SEE ELEVATION DETAILS FOR ANCHOR SPACING
- MINIMUM PENETRATION IS BEYOND WALL DRESSING
- TYPICAL 2 ROWS OF FASTENERS FOR THRESHOLD INSTALLATION
- BASE MATERIAL DESIGNED BY OTHERS TO WITHSTAND IMPOSED LOAD



DOOR ALLOWABLE DESIGNED PRESSURES

NOMINAL SIZE	ALLOWABLE PRESSURE
93 X 104	+55*, -55 PSF
93 X 92	+62*, -62 PSF

NON-IMPACT



PACKAGE HEIGHT INFORMATION

MAX PACKAGE HEIGHT	MASONRY OPENING	NOM. CLEAR DOOR OPENING
8'-8" (104")	8'-8 1/4" (104 1/4")	94 1/8"

PACKAGE WIDTH INFORMATION

MAX PACKAGE WIDTH	MASONRY OPENING	NOM. CLEAR DOOR OPENING	SLIDING DOOR PANEL NOM. WIDTH	EMERGENCY BREAKOUT NOM. WIDTH
7'-9 3/16" (93 3/16")	7'-9 11/16" (93 11/16")	40"	46 1/8"	85"

TORMAX USA Inc.
12859 WETMORE RD, SAN ANTONIO, TX. 78247

DO NOT SCALE PRINT. TOLERANCES UNLESS OTHERWISE SPECIFIED

.XX ± .010
.XXX ± .005
± .5"

TORMAX AUTOMATIC

TITLE: 9300 NON-IMPACT, SINGLES

REF. FL# 17648.4

MATERIAL: N/A

FINISH: N/A

SIZE: A

DRAWN BY: Jesus C.

Dwg. No. - Revision: US801175-H

SCALE: None

DATE: 06/24/2004

SHEET: Page 1 of 1